



Christmas SAVINGS CATALOG



DON'T MISS OUR
HOLIDAY CLOSEOUT
MACHINES ✂️

UP TO
**70%
OFF**

DETAILS
TO FOLLOW



LOWEST PRICES
GUARANTEED *

Family-Owned Since 1983

www.sewvacauthority.com

.....
INSIDE: STORE CLASSES | SPECIAL EVENTS | COUPONS | & MORE

TABLE OF

Contents



3	BERNINA + BERNETTE DEALS
20	BROTHER DEALS
33	JANOME DEALS
43	VIKING DEALS
51	FURNITURE DEALS
76	LONG ARM DEALS
89	VACUUM DEALS
91	LAURASTAR IRONING SYSTEMS
93	OUR LOCATIONS + STORE INFO

WHY BUY FROM US?

LOW PRICE PROMISE

TRUE WARRANTY

90-DAY PRICE MATCH

FREE LESSONS

LOCAL & FAMILY OWNED



WISHBOOK 2025

SEW YOUR STORY. OCTOBER 1–DECEMBER 31

BERNINA
made to create

MORE
JOY
OF PRO



SCAN TO LEARN
MORE ABOUT
THE 7 PRO SERIES
MACHINES

BERNINA 7 PRO SERIES

THE NEXT LEVEL OF SEWING, QUILTING AND EMBROIDERY.

Enriched with exciting new sewing, quilting and embroidery features along with the next generation stitchprecision² Technology, all **BERNINA 7 PRO** models are even more precise and comfortable to sew, quilt and embroider.

NEW BERNINA STITCHPRECISION²

Superior stitch quality and up to 33% higher SDT embroidery speed.

NEW BERNINA PINPOINT LASER

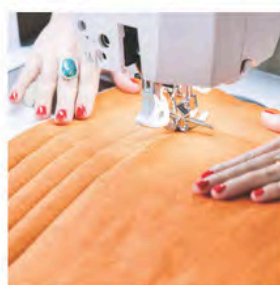
See exactly where the needle will enter the fabric in every position.

NEW AUTOMATIC NEEDLE THREADER

Get started with the next thread conveniently and quickly, every single time.

STITCH DESIGNER

With one touch, your design will be transformed into a stitch pattern.



SCAN TO
LEARN MORE
ABOUT THE
B 790 PRO

B 790 PRO

PRECISE LIKE A PRO

The **BERNINA 790 PRO** features the next generation BERNINA stitchprecision² Technology that makes your sewing, quilting and embroidery experience quieter, more precise, and joyful.

\$16,499 or **\$296.39/MONTH***

**Total payments including interest of \$17,783.40
2.99% APR for 60 months**

on in-store purchases of \$4,000 or more made with your BERNINA Credit Card.

Participating Dealers Only.

60 fixed monthly payments required.

FREE GIFT BUNDLES

TOTAL VALUE
\$3,659¹

ALL THREE BUNDLES INCLUDED WITH PURCHASE OF A B 790 PRO



\$1,480
VALUE

PRO EMBROIDERY BUNDLE

- BQM Design Collection
- Isacord Thread Bundle
- Stabilizer Set
- Small Clamp Hoop
- BERNINA Skill Hub Class



\$1,250
VALUE

PRO QUILTING BUNDLE

- Amanda Murphy Exclusive Pattern
- Fabric Kit
- Borders Ruler Kit
- Quilting Threads
- Adjustable Ruler Foot with Slit #72S
- BERNINA Skill Hub Class



\$929
VALUE

PRO SEWING BUNDLE

- BERNINA Thread Library
- The BIG Book of Presser Feet
- Scissor Set
- BERNINA Skill Hub Class



INCLUDES
QUILTING
BUNDLE

PRO QUILTING BUNDLE

- Amanda Murphy Exclusive Pattern
- Fabric Kit
- Borders Ruler Kit
- Quilting Threads
- Adjustable Ruler Foot with Slit #72S
- BERNINA Skill Hub Class



\$1,250
VALUE²

B 770 QE PRO

QUILT LIKE A PRO

The **BERNINA 770 QE PRO** brings advanced technology to a whole new level. With a selection of specialty stitches, this machine is perfect for adding beautiful detail to quilts, garments, and accessories alike.

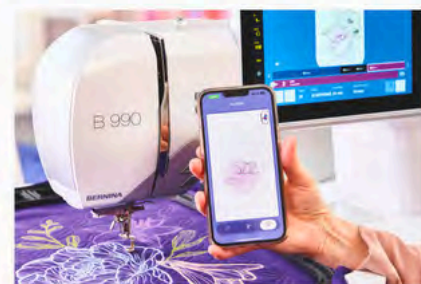
\$10,999 or \$197.59/MONTH[†]

Total payments including interest of \$11,855.40
2.99% APR for 60 months

on in-store purchases of \$4,000 or more made with your BERNINA Credit Card.

Participating Dealers Only.

60 fixed monthly payments required.



B 990

CREATE YOUR MAGIC

With its vast sewing space, large preview screen, and giant embroidery hoop, the **BERNINA 990** turns your quilting, sewing, and embroidery wishes into **creative magic**.



SCAN TO
LEARN MORE
ABOUT
THE B 990

\$24,999 or \$391.00/MONTH¹

**Total payments including interest of \$28,152.00
3.99% APR for 72 months**

on in-store purchases of \$5,000 or more made with your
BERNINA Credit Card.

Participating Dealers Only.

72 fixed monthly payments required.

BERNINA 990

FREE LUGGAGE & GIFTS

VALUE OVER **\$5,200!⁷**



B 990 BUNDLE

- 3 Piece Trolley System
Exclusive to B 990
- V9 DesignerPlus Software
- BERNINA Skill Hub Class
- OESD B 990 Bundle
 - Stabilizer Set
 - Isacord Thread Set
 - Embroidery Design Collection
 - BQM Design Collection
 - Expert Embroidery Tape TearAway



CUSTOMIZE OVER 2,900 STITCH PATTERNS

The Stitch Altering Area visualizes your sewing stitches and edits in real time. Zoom in and out, rotate the view and see the stitches magically come to life on the screen prior to sewing on your project.



\$929
VALUE⁵

PRO SEWING BUNDLE

- BERNINA Thread Library
- The BIG Book of Presser Feet
- Scissor Set
- BERNINA Skill Hub Class

B 735 PRO

\$7,999 or **\$143.70/MONTH¹**

Total payments including interest of \$8,622.00

2.99% APR for 60 months

on in-store purchases of \$4,000 or more made with your BERNINA Credit Card.

Participating Dealers Only.

60 fixed monthly payments required.

B 735 PRO WITH EMBROIDERY MODULE

\$10,999 or **\$197.59/MONTH¹**

Total payments including interest of \$11,855.40

2.99% APR for 60 months

on in-store purchases of \$4,000 or more made with your BERNINA Credit Card.

Participating Dealers Only.

60 fixed monthly payments required.



B 700 PRO

WITH EMBROIDERY MODULE

\$6,999 or **\$125.73/MONTH¹**

Total payments including interest of \$7,543.80

2.99% APR for 60 months

on in-store purchases of \$4,000 or more made with your BERNINA Credit Card.

Participating Dealers Only.

60 fixed monthly payments required.



\$1,480
VALUE⁶

PRO EMBROIDERY BUNDLE

- BQM Design Collection
- Isacord Thread Bundle
- Stabilizer Set
- Small Clamp Hoop
- BERNINA Skill Hub Class



Q 24 ON PRO FRAME

WITH Q-MATIC

Palm Precision Handles shown. Included with the Frame Accessory Bundle Box.

WHAT'S INCLUDED

- Q 24 Machine Head
- Q-matic Automation System
- PRO Frame (select from three different sizes)
- Professional Creative Bundle
 - Frame Accessory Bundle Box
 - Precision Ruler Guide PRO
 - Batting Bar

Q 24, PRO Frame and Q-matic	\$32,999	\$44,998
Professional Creative Bundle (Optional)	+ \$4,000	\$5,623
Special Price:	\$36,999	\$50,621

BUNDLED SAVINGS \$13,622*



\$36,999 or \$578.69/MONTH*

Total payments including interest of \$41,665.68

3.99% APR for 72 months

on in-store purchases of \$5,000 or more made with your BERNINA Credit Card.

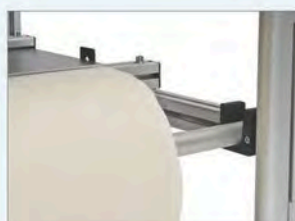
Participating Dealers Only.

72 fixed monthly payments required.

PROFESSIONAL CREATIVE BUNDLE



Frame Accessory Bundle Box
—includes 20 essential longarm accessories



Batting Bar



Precision Ruler Guide PRO



Q 20 ON 10ft STUDIO FRAME

WHAT'S INCLUDED

- Q 20 Machine Head
- 10ft Studio Frame
- Studio Creative Bundle
 - Frame Accessory Bundle Box
 - Batting Bar



Frame Accessory Bundle Box
—includes 20 essential
longarm accessories

Batting Bar



BUNDLED
SAVINGS
\$5,874⁹

Q 20 and 10ft Studio Frame \$13,499 ~~\$18,449~~

Studio Creative Bundle (Optional) + \$3,000 ~~\$3,924~~

Special Price: \$16,499 ~~\$22,373~~

\$16,499 or \$258.05/MONTH¹

Total payments including interest of \$18,579.60

3.99% APR for 72 months

on in-store purchases of \$5,000 or more made with your
BERNINA Credit Card.

Participating Dealers Only.

72 fixed monthly payments required.

Q 16 ON HORN LIFT TABLE

WHAT'S INCLUDED

- Q 16 Machine Head
- Horn Lift Table
- Creative Quilters Bundle
 - Sit-down Accessory Bundle Box



Sit-down Accessory
Bundle Box
—includes 18
essential sit-down
longarm accessories



BUNDLED
SAVINGS
\$3,625¹⁰

Q 16 and Horn Lift Table \$8,999 ~~\$11,999~~

Creative Quilters Bundle (Optional) + \$1,600 ~~\$2,225~~

Special Price: \$10,599 ~~\$14,224~~

\$10,599 or \$165.78/MONTH¹

Total payments including interest of \$11,936.16

3.99% APR for 72 months

on in-store purchases of \$5,000 or more made with your
BERNINA Credit Card.

Participating Dealers Only.

72 fixed monthly payments required.

BERNINA LONGARM BUNDLES





bernette 68

MAKER EDITION **\$3,349**

The **b68 Maker** offers you an extensive selection of overlock and coverstitches—ideal for working with stretch fabrics as well as for sewing and embellishing woven fabrics.



INCLUDES FREE ACCESSORY BUNDLE CONTAINING

- Mini Vacuum Cleaner
- Exclusive Presser Foot Set



bernette 38

YAYA HAN EDITION **\$1,349**

The **b38 Yaya Han** blends creative flair with dependable features. Designed by cosplay icon Yaya Han, this limited edition includes a **unique accessory set** tailored for cosplay enthusiasts.

bernette
SWISS DESIGN

ACCESSORY SET INCLUDES

- Presser Foot Set
- Seam Ripper
- Scissors





WHAT'S INCLUDED

- Serger Accessory Case
- L 890 Accessory Set
- Serger Thread Collection
- The BIG Book of Serging
- BERNINA Skill Hub Class

ADD THE BUNDLE
FOR AN EXTRA

\$1,000¹¹
\$2,000+ MSRP



L 890

ULTIMATE COMBO MACHINE

Truly a revolution in **overlock and coverstitching**.
Enjoy the ultimate serger experience when you
combine the many preprogrammed stitches with
the beauty of decorative threads.

SPECIAL PRICE¹¹ MACHINE ONLY

\$5,499 \$8,749 MSRP or **\$98.79/MONTH***

Total payments including interest of \$5,927.40
2.99% APR for 60 months

on in-store purchases of \$4,000 or more made with your
BERNINA Credit Card.

Participating Dealers Only.

60 fixed monthly payments required.

BERNINA L 890 / 3 SERIES (GEN 2)

BERNINA 3 SERIES GEN 2

BIG QUALITY COMES IN A SMALL BUT POWERFUL PACKAGE



BERNINA 3 SERIES

- Easy-to-Use Color Touch Screen
- See Every Stitch with Bright LED Lighting
- Tons of Innovative, Convenient Features

B 335

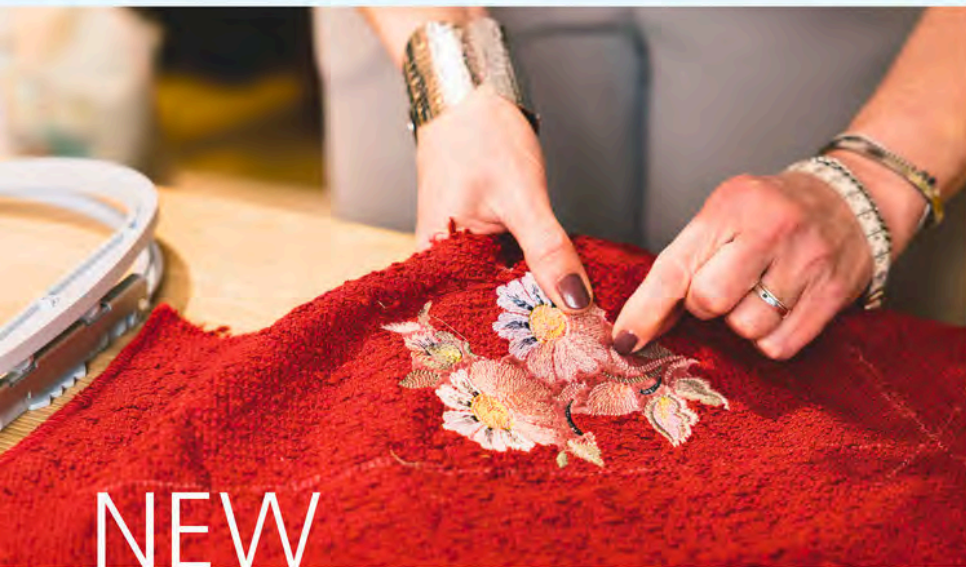
\$1,799

B 325

\$1,499



SCAN TO LEARN
MORE ABOUT THE
NEW BERNINA 3 SERIES!



NEW ACCESSORIES

FOR ALL YOUR PROJECTS

BERNINA offers a **wide selection of accessories** for sewing, quilting and embroidery. Do everything more easily, precisely and conveniently. Great assistants for all your creative projects.



SOCK HOOP INSERT SET \$249

- Set Includes Two Sizes
- Inserts Into the Medium Embroidery Hoop



NEW

>>> NEW MAGNETIC HOOPS ALLOW YOU TO **HOOP WITHOUT PRESSURE MARKS**



NEW

MEDIUM BORDER CLAMP HOOP

- Max. Embroidery Area: 8.5" x 16"
- Ideal for Quilters. Save Stabilizer & Fabric

\$449



NEW

MEDIUM MAGNETIC EMBROIDERY HOOP

- Max. Embroidery Area: 6.5" x 10.4"
- For Thick & Thin Fabrics

\$324



NEW

LARGE MAGNETIC EMBROIDERY HOOP

- Max. Embroidery Area: 8.25" x 15.75"
- For Thick Fabrics & Large Projects

\$399



NEW

MEDIUM BORDER MAGNETIC EMBROIDERY HOOP

- Max. Embroidery Area: 6.5" x 15.75"
- For Thin Fabrics & Projects that are Difficult to Hoop

\$349



NEW

**THE BIG BOOK
OF FASHION
SEWING
\$125**

THE BERNINA BIG BOOKS COLLECTION

- Fashion Sewing
- Computerized Quilting
- Longarm Quilting
- Serging
- Serger Quilting
- Presser Feet
- Stitches
- Embroidery
- Machine Quilting



Detailed guidance
and expert tips
for every project.

ACCESSORIES

Accessory of the Month *December*

BERNINA & bernette Presser Feet

25% OFF*

Deck your projects with festive flair and enhance your sewing with the presser feet you've been wishing for all year!



made to create **BERNINA**

*Offer valid December 1-31, 2025 at any participating authorized BERNINA/bernette in the United States of America. Offer good for 25% off MSRP on BERNINA and bernette presser feet. Discount is off MSRP. Offer not valid on previous purchases or with any other offers or coupons. Some exclusions may apply. Subject to availability. Available while supplies last. Taxes not included in total purchase calculation. Customer is responsible for all applicable sales tax. Offer is not transferable, not redeemable for cash, and has no cash value. Offer and its terms are subject to change. Offer void where prohibited by law.



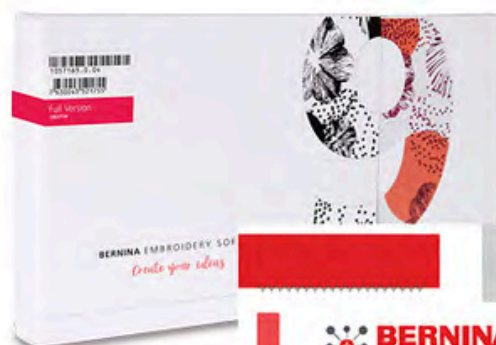
Stylish Holiday Savings

December 1–31, 2025

made to create **BERNINA**

Stylish Holiday Savings*

December 1–31, 2025



25% Off MSRP

- BERNINA & bernette Presser Feet
- Embroidery Hoops
- Embroidery Software
- BERNINA Skill Hub Classes

BERNINA
made to create

bernette
SWISS DESIGN

*Offer valid December 1–31, 2025, for 25% off MSRP at any participating BERNINA/bernette Store in the United States of America. Offer applies only to the purchase of new BERNINA or bernette Presser Feet, BERNINA/bernette Embroidery Hoops, BERNINA Embroidery Software, and BERNINA Skill Hub classes. Not valid on previous purchases or with any other offers or coupons. Subject to availability. Available while supplies last. If customer returns the product(s) purchase discount will be lost. Customer is responsible for all applicable sales tax. Offer void where prohibited by law.

Stylish Holiday Gifts*

December 1–31, 2025



b05 ACADEMY



b38



FREE TOTE

with the purchase of a
b05 ACADEMY or any
b30 series machine.

\$164.99 VALUE

Yaya Han b38 Special Edition excluded

bernette

SWISS DESIGN

*Offer valid December 1–31, 2025 at any participating BERNINA/bernette Stores in the United States of America. Offer applies only to the purchase of a new Bernette (b) 33, b35, b37, b38 or b05 ACADEMY sewing machine. Yaya Han b38 Special Edition excluded from offer. Offer may not be combined or replaced with any other BERNINA/bernette promotional offers, rebates, coupons or discounts. Not valid on previous purchases. Taxes not included in the total purchase calculation. Available while supplies last. Offer and its terms are subject to change. Void where prohibited by law.

Limited-Time Finance Offer

December 1–31, 2025



0% interest for 24 Months*

On in-store purchases of \$1,500 or more.

Participating Dealers Only.

24 equal monthly payments required.

BERNINA
made to create

*Offer applies only to single-receipt qualifying purchases. No interest will be charged, and equal monthly payments are required on promo purchase until it is paid in full. The payments equal the amount financed divided by the number of months in the promo period, rounded up to the next whole dollar. These payments may be higher than the payments that would be required if this purchase was a non-promo purchase. During the last month(s) of the promo period the required monthly payment may be reduced due to the prior months' rounding. Regular account terms apply to non-promo purchases. New Accounts as of 07/31/2025: Purchase APR 34.99%. Penalty APR 39.99%. Min Interest Charge \$2. Existing cardholders: See your credit card agreement terms. Subject to credit approval. Participating Dealers Only. See Store for Details. We reserve the right to discontinue or alter the terms of this offer any time.



OUR BERNINA & BERNETTE CLOSEOUT MODELS

OVER
**50%
OFF**

ONLY AT QUILT QUARTERS

BERNINA B770 QE PLUS

FLOOR MODEL • NO BOX!

Was: \$8,199.00 | **OUR PRICE: \$5,999.00**

BERNINA B770 QE PLUS

NEW • IN ORIGINAL BOX!

Was: \$8,199.00 | **OUR PRICE: \$6,499.00**

BERNINA L860

CLASSROOM MODEL • ORIGINAL BOX!

Was: \$5,499.00 | **OUR PRICE: \$3,999.00**

BERNINA L850

NEW • IN ORIGINAL BOX!

Was: \$3,849.00 | **OUR PRICE: \$3,099.00**

BERNINA B435

RETURNED – USED • IN ORIGINAL BOX!

Was: \$1,999.00 | **OUR PRICE: \$1,670.00**

BERNINA B335

FLOOR MODEL • NO BOX!

Was: \$1,499.00 | **OUR PRICE: \$999.99**

BERNETTE YAYA HAN B79

NEW • ORIGINAL BOX

Was: \$3,339.00 | **OUR PRICE: \$1,999.00**

BERNETTE B05 CRAFTER – ORANGE

FLOOR MODEL • NO BOX

Was: \$465.00 | **OUR PRICE: \$308.00**

ONLY AT OUR CLARKSVILLE STORE

BERNINA B 325 GEN 1

FLOOR MODEL • NO BOX

Was: \$1,399.99 | **OUR PRICE: \$999.99**

BERNINA B 335 GEN 1

FLOOR MODEL • NO BOX

Was: \$1,599.99 | **OUR PRICE: \$999.99**

BERNINA 570

PADUCAH FLOOR MODEL • NO BOX

Was: \$5,199.00 | **OUR PRICE: \$3,499.00**

BERNETTE 70

FLOOR MODEL • NO BOX

Was: \$1,549.99 | **OUR PRICE: \$1,299.00**

BERNETTE B05

CRAFTER – ORANGE

IN ORIGINAL BOX (OPEN)

Was: \$465.00 | **OUR PRICE: \$299.99**



OUR BEST
PRICES OF
THE YEAR!



OUR BERNINA & BERNETTE CLOSEOUT MODELS

OVER
**50%
OFF**

ONLY AT OUR LOUISVILLE STORE

BERNINA 830E

CERTIFIED PRE-OWNED – 85% OFF

WAS: \$12,999 | **OUR PRICE: \$1,999**

Only one in stock!

BERNINA 7/8 SERIES

EMBROIDERY MODULE

(CERTIFIED PRE-OWNED) – 77% OFF

WAS: \$2,099 | **OUR PRICE: \$499**

Only one in stock!

BERNINA B590E

WITH EMBROIDERY MODULE

30% OFF FLOOR MODEL

WAS: \$8,499 | **OUR PRICE: \$5,999**

Only one in stock!

BERNINA KAFFE 770 QE E PLUS

WITH EMBROIDERY, LUGGAGE, & GIFT!

41% OFF FLOOR MODEL

WAS: \$11,999 | **OUR PRICE: \$7,199**

Only one in stock!

**AMAZING
HOLI-DEAL!**



ONLY AT OUR GREENWOOD STORE

BERNINA B335

Floor Model

WAS: \$1,899.99

OUR PRICE: \$1,299



MORE IN-STOCK! CALL FOR DETAILS:

BERNINA Q20

WITH FOLDABLE TABLE

**NEW HEAD, FORMER FLOOR MODEL
TABLE (HAS CHIP)**

WAS: \$13,899.00 | **OUR PRICE: \$8,999.00**

BERNINA B535

NEW IN BOX • ORIGINAL BOX

WAS: \$6,499.00 | **OUR PRICE: \$3,299.00**

BERNETTE B79

YA YA HAN EDITION

NEW IN BOX • ORIGINAL BOX

WAS: \$2,899.00 | **OUR PRICE: \$1,999.00**

BERNINA HOOP FRAME

FLOOR MODEL – BRAND NEW!

WAS: \$4,499 | **OUR PRICE: \$3,499**

**BONUS INCLUDES: BERNINA 830
CERTIFIED PRE-OWNED**



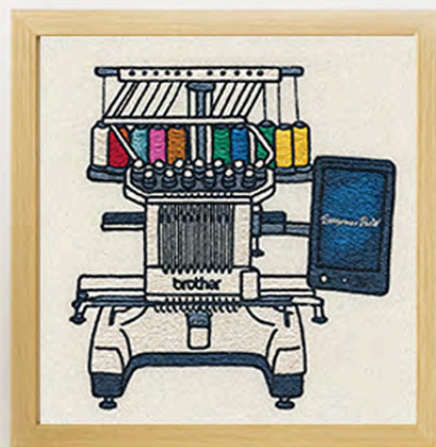
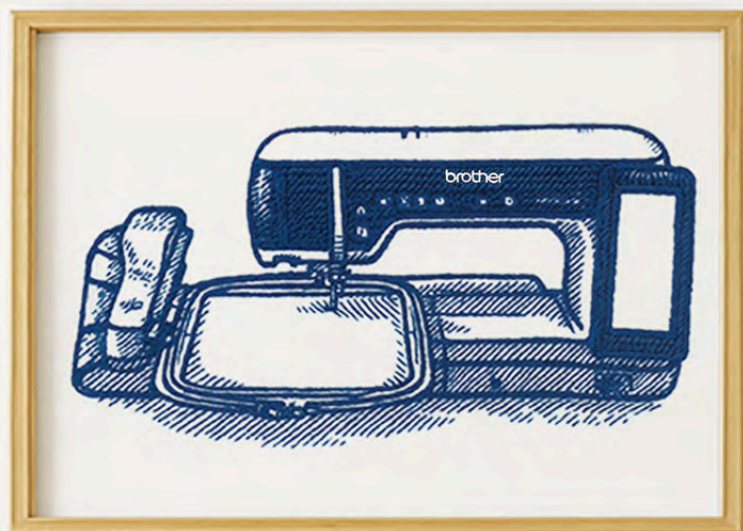
BERNINA 990 – CLASSROOM

MODEL | CALL YOUR LOCAL

STORE ASAP FOR LOWEST PRICE!

2025 HOLIDAY GIFT GUIDE

NOVEMBER 1 - DECEMBER 31, 2025



brother
at your side

AVENEER

SEWING · EMBROIDERY · QUILTING

©Disney



Aveneer EV1

ADVANCED SEWING,
QUILTING & EMBROIDERY



Compatible
with Artspira

TOP FEATURES

- Over 800 sewing stitches, 1,858 embroidery designs, 31 fonts, and over 200 Disney character patterns
- Industry-leading 11 5/8" x 18 1/4" embroidery frame
- Intelligent Stitch Regulator adjusts the needle timing to match the actual speed of the fabric being fed into the machine
- Picture Play Embroidery function uses AI technology to convert photos or images into thread art
- A best-in-class 14.1" workspace (70 square inches) from needle to arm

• Special Gift with Aveneer Purchase. Get 12 exclusive embroidery designs in the Artspira app², plus 12 Angela Wolf embroidery designs

• Access to the Angela Wolf Aveneer Masterclass, a \$1,699.99 value, FREE with machine registration¹



FREE
AVENEER EV1 BUNDLE[‡]
SA24EV1BNDL
\$6,379.99 VALUE

Bundle includes Aveneer 2-Piece Luggage Set (SASEBEV1), Angela Wolf Embroidery Design Collection (SAAWCEV1) and Thread Set (ETPAWEV150), BES Silver Software (SABESSILVER)

— **PLUS** —

FREE
**HOOPNETIC MAGNETIC
SASH FRAME[‡]**
SAMS360
\$791.99 VALUE
Direct from Dealer
WITH PURCHASE OF THE EV1

**20%
OFF**
Accessories^{*}

DISCOUNT PROVIDED BY DEALER
AT TIME OF PURCHASE

OPTIONAL AVENEER ACCESSORIES⁵



WIDE TABLE
SAWTEV1



EV1 PLAYBOOK
SAEV1BOOK



FREE

**FREE ROLLING
TOTE BAG[‡]**

CADXTOTEB
\$241.99 VALUE

PLUS

\$200

INSTANT REBATE[‡]

Direct from Dealer
WITH PURCHASE OF
THE SDX330D

ScanNCut DX
Innov-is Edition

SDX330D

ELECTRONIC CUTTING MACHINE

TOP FEATURES

- 1,485 built-in designs, including 182 Disney designs
- Industry-first blade sensor technology to detect the thickness of the material²
- PES/PHX file readability[†]
- Wireless-enabled with My Connection

[†]Reads most PES/PHX files. Software version 1.1x or higher required.



Compatible
with Artspira



FREE

FABRIC ROLL[‡]

PACB01
\$87.99 VALUE

PLUS

\$200

INSTANT REBATE[‡]

Direct from Dealer
WITH PURCHASE
OF PRINTMODA

PRINTMODA
Studio

FABRIC PRINTER HLJF1

TOP FEATURES

- Produce custom banners, seasonal home décor, and even personalized photo quilts
- Fast printing speeds
- Uses Brother Genuine LC406BK Standard Yield INKvestment Tank Ink Cartridges

AS LOW AS
\$849.99[#]



Compatible
with Artspira



SKiTCH
EMBROIDERY MADE EASY

PP1

ARTSPIRA APP-POWERED EMBROIDERY MACHINE⁴

TOP FEATURES

- Create designs using Artspira and a smart device (phone or tablet)
- Use Artspira to transfer designs from the app to the machine
- Maximum embroidery area of 4" x 4"

**MAKES
A GREAT
GIFT!**

AS LOW AS
\$399.99[#]



Compatible
with Artspira



NEW!



Entrepreneur Pro W

PR1060W

PR1060W

10-NEEDLE EMBROIDERY

TOP HOME & HOBBY FEATURES

- Generous 8" x 14" embroidery area
- Over 1,200 embroidery designs, 50 fonts, and one 3D font
- Virtually preview your design on fabric with the built-in camera feature
- Four included embroidery frames 8" x 14", 5" x 7", 4" x 4", and 1.5" x 2"

TOP BUSINESS FEATURES

- Digitize logos and designs using the optional **BE EmbroideryStudio Software**⁵
- Manage multiple users without multiple passwords and logins with Security Lock Modes
- Customize access to machine functions to help secure essential business designs with the Key Optimization System



Compatible with Artspira

FREE ACCESSORY BUNDLE[‡]

PR10ACCBNDL

\$3,870.99 VALUE

Includes PR Stand (PRNSTD2), Durkee 7-PC Frame Set (SAEZ7MN), and Wide Cap Frame Set (PRPCFI)

+ FREE FLASH FRAME L CLAMP MAGNETIC KIT (5" x 7")[‡]

PRVMFLKIT

AND SINGLE FLASH FRAME M CLAMP MAGNETIC HOOP (4" x 4")[‡]

PRVMFM

\$1,924.98 COMBINED VALUE

OR

FREE BUSINESS BUNDLE[‡]

PR10BUSBNDL

\$5,205.99 VALUE

Includes BE EmbroideryStudio Software (BE1) and PR Stand (PRNSTD2)

+ BEST 100 THREAD KIT[‡]

ETPBEST100

\$747.99 VALUE

Direct from Dealer
WITH PURCHASE OF THE PR1060W

20% OFF
Accessories*

DISCOUNT PROVIDED BY DEALER
AT TIME OF PURCHASE

OPTIONAL PR ACCESSORIES⁵



DURKEE NAME FRAME 7 1/2" x 6 1/4"
SANFPRMN



WIDE TABLE
PRWT1



DURKEE STURDY HOOP 12" x 14"
SASTURDY12X14

Entrepreneur W 
PR680W

AS LOW AS
\$12,999.99[‡]

PR680W

6-NEEDLE EMBROIDERY

TOP FEATURES

- Get precision accuracy positioning and see where the needle will drop with the Crosshair Embroidery Droplight Laser
- My Stitch Monitor³ mobile app notifies you via your iOS or Android™ mobile device when you need to change threads or if your project has finished stitching
- 100 built-in embroidery designs, 18 monogramming font styles, 140 frame pattern combinations, and 50 lettering fonts
- Special Gift with Purchase[‡]: Free PR680W Playbook (SAPR6BOOK) with purchase of the PR680W – a \$564.99 value



Compatible with Artspira

SPECIAL BUNDLE OFFER[‡]

PR680WBNL

Bundle includes PR680W, PR Stand (PRNSTD2), Durkee 7-PC Frame Set (SAEZ7MN), and Universal Cap Frame Set (PRCF5)

PLUS

FREE

**FLASH FRAME L CLAMP
MAGNETIC KIT (5" x 7")[‡]**

PRVMFLKIT

\$1,132.99 VALUE

**AND SINGLE FLASH
FRAME M CLAMP
MAGNETIC HOOP (4" x 4")[‡]**

PRVMFM

\$791.99 VALUE

Direct from Dealer

WITH PURCHASE OF THE PR680W

Entrepreneur One 
PR1X

AS LOW AS
\$6,599.99[‡]

PR1X

SINGLE-NEEDLE EMBROIDERY

TOP FEATURES

- Spacious 8" x 12" embroidery area
- Crosshair 2-Point Positioning Laser for precision accuracy positioning
- Built-in fonts, including 25 regular sized fonts, 4 small fonts, 1 super-small font, 2 Cyrillic fonts, and 1 3D font
- Optional accessory kits available⁶, starting as low as \$649.99 – Apparel Kit (PRAPRLKIT1), Sports Kit (PRSPRTKIT1), Monogram Kit (PRMNGRMKIT1), Consumables Kit (PRCNSKIT1)



FREE

**UNIVERSAL CAP FRAME
SET[‡]**

PRCF5

\$1,814.99 VALUE

PLUS

FREE PR1X PLAYBOOK[‡]

SAPR1XBOOK

\$274.99 VALUE

Direct from Dealer

WITH PURCHASE OF THE PR1X



ASK ABOUT OUR NEW BE EMBROIDERYSTUDIO SOFTWARE!

Enjoy the freedom to design and digitize your logos and customize monogrammed designs using the optional BE EmbroideryStudio Software.

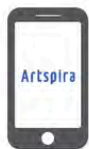
STELLAIRE 2

©Disney



Innov-ís XE2

EMBROIDERY



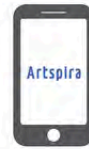
Compatible
with Artspira

TOP FEATURES

- 788 built-in embroidery designs and 101 Disney designs
- 2-Point Embroidery Positioning Function with a LED Pointer for precise positioning
- Matrix Copy feature to add multiple copies of the same design

Innov-ís XJ2

SEWING, QUILTING & EMBROIDERY



Compatible
with Artspira

TOP FEATURES

- 760 built-in decorative sewing stitches and 788 built-in embroidery designs
- My Custom Stitch feature to create a stitch or pattern, save it, and then use it for all your projects



- Exclusive to Stellaire 2, get 10 free embroidery designs only available in the Artspira mobile app²
- Access to the Angela Wolf Stellaire Masterclass, a \$1,200 value, FREE with XE2 or XJ2 machine registration¹

FREE

**DESIGNIO
LUGGAGE SET[†]**
SASEBXJE2
\$659.99 VALUE

PLUS

FREE

**MULTI-FUNCTION
FOOT CONTROLLER[†]**
SAMFCC1
\$565.99 VALUE

Direct from Dealer
WITH PURCHASE OF XE2 OR XJ2

AND

\$200

INSTANT REBATE[†]

Direct from Dealer
WITH PURCHASE OF XE2

OR

\$300

INSTANT REBATE[†]

Direct from Dealer
WITH PURCHASE OF XJ2

OPTIONAL STELLAIRE ACCESSORIES⁵



PEDESIGN 11 SOFTWARE
PEDESIGN11



**7" X 12" MAGNETIC
SASH FRAME**
SAMF300



**ADJUSTABLE ZIPPER
PIPING FOOT**
SA227

20% OFF Accessories*

DISCOUNT PROVIDED BY DEALER
AT TIME OF PURCHASE



Celeste⁺

NEW!

Celeste CX1

SEWING & QUILTING

TOP FEATURES

- 760 built-in sewing stitches
- Spacious 11.25" x 5.0" workspace (~16" x 25" workspace with the included wide table)
- Intelligent Stitch Regulator adjusts the needle timing to match the actual speed of the fabric being fed into the machine
- Sew Straight Laser Guide employs a bright laser line for quilting, piecing, sewing, or aligning rows of decorative stitches in smooth, straight lines, regardless of fabric color
- My Custom Stitch creates a unique stitch or pattern and saves it for your next project
- Large 10.1" built-in high-definition LCD display



Compatible with Artspira

FREE
CELESTE
QUILTERS BUNDLE[†]
SASEBCX1BNDL
\$1,969.99 VALUE

Bundle includes Luggage Set (SASEBCX), Notions Case (SASEBCX1N), and Antique Brother Sewing Machine Quilt Kit (SALKSWQKIT1)

Direct from Dealer
WITH PURCHASE OF THE CX1



Celeste CX1e

EMBROIDERY-ONLY

TOP FEATURES

- 523 built-in embroidery applications, 26 embroidery fonts, and 24 built-in craft patterns
- Artspira mobile app³ compatibility to download embroidery designs or make your own
- Maximum embroidery area of 9.5" x 14"
- 2-Point Embroidery Positioning Function with LED pointer for precise positioning
- Matrix Copy feature to add multiple copies of the same design
- 10.1" built-in high-definition LCD display



Compatible with Artspira



PAIR WITH
OPTIONAL
BES SILVER⁵
(SABESSILVER)

FREE
CELESTE
EMBROIDERY BUNDLE[†]
SASEBCX1EBNDL
\$1,669.99 VALUE

Bundle includes Luggage Set (SASEBCX), Notions Case (SASEBCX1N), and EmbroiderLee-Celeste's Spring Floral Quilt-in-the-Hoop Collection (SASSEMB1)

Direct from Dealer
WITH PURCHASE OF THE CX1e



AIRFLOW
3000

AS LOW AS
\$1,099.99[#]

AIRFLOW 3000

AIR-THREADING SERGER

TOP FEATURES

- Easy one-touch looper threading that uses a blast of air for threading
- Excellent for fine knits and stretchy materials
- Includes a Trim Trap, a Gathering Foot, a Blind Stitch Foot, and a Piping Foot
- Includes Serger Thread Starter kit, which features four 1,750-yard spools in white, pearl grey, hi-taupe, and black

- Access to the Angela Wolf AIRFLOW 3000 Masterclass, a \$999.99 value, FREE with AIRFLOW 3000 machine registration¹

FREE
AIR SERGER
ROLLING TROLLEY[‡]

SASEBAF3000

\$274.99 VALUE

AND

WIDE EXTENSION TABLE[‡]

SAWT8

\$329.99 VALUE

PLUS

\$100
INSTANT REBATE[‡]

Direct from Dealer

WITH PURCHASE OF THE AIRFLOW 3000



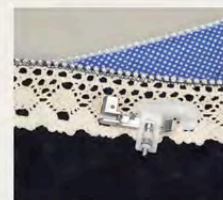
20% OFF
Accessories^{*}

DISCOUNT PROVIDED BY DEALER
AT TIME OF PURCHASE

OPTIONAL AIRFLOW 3000 ACCESSORIES⁵



**AIR SERGER
ROLLING TROLLEY**
SASEBAF3000



**PEARLS AND
SEQUINS FOOT**
SA217

QUILT CLUB
SERIES

Innov-is BQ3100

ADVANCED SEWING & QUILTING

TOP FEATURES

- 759 utility and decorative stitches (729 built-in, 30 on CD), 14 one-step auto-size buttonhole styles, and 5 sewing fonts
- Special Gift with Purchase[†]: Free Exclusive Bag Set (SASEBSEWE) and Advanced Quilt Software (SAADVQLT) – a \$1,223.89 value

Innov-is BQ1350

ADVANCED SEWING & QUILTING

TOP FEATURES

- 290 built-in sewing stitches, 10 one-step auto-size buttonhole styles, and 5 sewing fonts
- Automatic Height Adjuster (AHA) feature for consistent stitch quality

\$400
INSTANT REBATE[†]

Direct from Dealer
WITH PURCHASE OF THE BQ3100



FREE
DUAL FUNCTION
FOOT CONTROLLER[†]

SADFFC

\$309.99 VALUE

AND

ROLLING TROLLEY SET[†]

SASEBSEWE

\$658.99 VALUE

Direct from Dealer
WITH PURCHASE OF
THE BQ1350



Pacesetter

**Give the Gift
of Sewing**

Ask about the Pacesetter lineup of machines.

\$1,979.99
MSRP
FOR P5700



Essence

Innov-ís VM5200

SEWING, QUILTING
& EMBROIDERY

TOP FEATURES

- 715 built-in sewing stitches, 318 embroidery designs, and 17 lettering fonts
- 11.25" workspace

Innov-ís VE2300

EMBROIDERY

TOP FEATURES

- 318 built-in embroidery designs and 140 frame pattern combinations
- Includes Design Viewer Software with 1,000 designs

FREE
ESSENCE BUNDLE[†] PLUS
VM5200BNDL2
\$956.99 VALUE

\$200
INSTANT REBATE[†]

Direct from Dealer
WITH PURCHASE OF THE VM5200 OR VE2300



Innov-ís NQ3550W

COMBINATION SEWING
& EMBROIDERY

TOP FEATURES

- 291 built-in sewing stitches, 258 embroidery designs, and 13 lettering fonts
- Embroider and sew up to 850 stitches per minute



Compatible
with Artspira

AS LOW AS
\$2,699.99[#]

\$400

INSTANT REBATE[†]

Direct from Dealer
WITH PURCHASE OF
THE NQ3550W

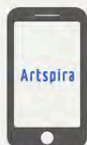


Innov-ís NQ1700E

EMBROIDERY-ONLY

TOP FEATURES

- 258 built-in embroidery designs
- BES Blue Software included - a \$451.99 value



Compatible
with Artspira

AS LOW AS
\$2,199.99[#]

FREE

5" x 7" MAGNETIC SASH[†]

SAMF180

\$564.99 VALUE

Direct from Dealer
WITH PURCHASE
OF THE NQ1700E



Innov-is NS1250E

EMBROIDERY-ONLY



Compatible
with Artspira

TOP FEATURES

- 193 built-in embroidery designs
- Advanced Color Sort, which adjusts the order in which multi-color embroidery designs are stitched

FREE

4" x 7" MAGNETIC FRAME†

SAMF180N

\$329.99 VALUE

Direct from Dealer
WITH PURCHASE
OF THE NS1250E



Pacesetter PS500

SEWING

TOP FEATURES

- 100 built-in sewing stitches, including 7 one-step buttonhole styles, and 4 sewing lettering fonts
- 8.3" from needle to arm workspace

AS LOW AS
\$879.99#

FREE

5 FOOT
EMBELLISHMENT PACK†

SA5FTPKG

\$162.99 VALUE

Direct from Dealer
WITH PURCHASE
OF THE PS500



Innov-is NS80E

COMPUTERIZED SEWING

TOP FEATURES

- 80 built-in stitches, including 8 one-step buttonholes
- 7 accessory feet included

AS LOW AS
\$659.99#

\$120

INSTANT REBATE†

Direct from Dealer
WITH PURCHASE
OF THE NS80E



Pacesetter PS200T

SEWING & QUILTING

AS LOW AS
\$399.99#
MSRP



Pacesetter PS100

SEWING

AS LOW AS
\$159.99#
MSRP



Artspira

**Sublimated?
Embroidered?
It's both.**

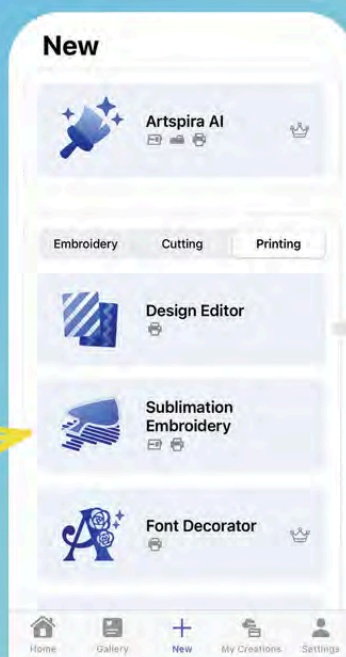
Create custom designs using
Brother-connected machines!

**Get 20% off Yearly
Artspira+ Plan®**



T&Cs apply, visit our website for full details.

Check it out!



**With robust
features like:**

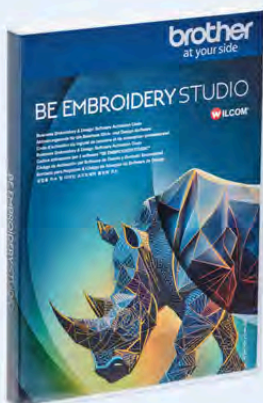
- AI Font Decorator
- Over 300 fonts for cutting, embroidery and printing
- Digitizing Tools
- New designs and projects monthly
- Artspira AI
- Import your own designs to send to Brother machines



**Download
Now**

BE EMBROIDERY STUDIO

The ultimate embroidery and multi-decoration software for professional digitizers, embroidery shops, industry trainers, educators and apparel decorators. Access to exclusive features like:



Hand Stitch Effect

Create an organic and hand-embroidery effect with simple settings on satin, tatami, running, and backstitch.



Reef PhotoStitch

Create photo embroidery with a single-stroke and single-color stitch.



Photo Flash / Color PhotoStitch

Converts any image into a multi-color digitized file, turning photos into artistic stitching.



Photo Flash



Color PhotoStitch

PLUS, Exclusive Access to Wilcom Academy

brother
at your side

For more information, call 1-877-BROTHER or visit www.brothersews.com

All stated offers are valid on single receipt qualifying purchases made at participating authorized Brother Dealers between November 1, 2025 and December 31, 2025. Refurbished or used machines do not qualify. Offers valid in USA only and are subject to change at any time and without notice. *Dealer Special Gifts with Purchase and Free Gifts from Brother and Dealer are all fulfilled at time of purchase by participating Authorized Brother Dealer. †Prices set by dealer and may vary. ‡Access to Masterclass free with the registration of a new: Aveneer machine purchased after August 19, 2024, a new Stellaire2 machine purchased after August 13, 2023 or a new Airflow 3000 purchased after November 3, 2022. ‡Free Artspira app download and wireless connection required in order to redeem designs. Designs will appear in your Artspira app once your new Aveneer or Stellaire 2 machine is successfully connected to the Artspira app. ‡Additional download and wireless connection required. Compatibility may vary by device and operating system. ‡Artspira app and wireless connection required for machine operation. App compatibility may vary by device and operating system. ‡Sold separately, additional purchase required. ‡You may sign up for a yearly subscription by making a one-time lump sum payment of \$119.99. Subscription may be cancelled at any time. By signing up for the yearly subscription you are receiving a discounted price in exchange for no refund or proration regardless of whether you cancel the service. Artspira app download and wireless connection required. Compatibility may vary by device and operating system. For full details or to enroll, visit www.brother-usa.com/artspira. ‡20% off all Brother Accessories fulfilled at time of purchase by participating Authorized Brother Dealers. Specifications are accurate at time of publication but are subject to change at any time. All trademarks and registered trademarks referenced herein are the property of their respective companies. ©2025 Brother International Corporation. ©Disney.



BROTHER

CLOSEOUT MODELS

OVER
**50%
OFF**

ONLY AT QUILT QUARTERS

BROTHER BQ2450

NEW • ORIGINAL BOX • LAST ONE

WAS: \$5,999.00 | **OUR PRICE: \$4,500.00**

BROTHER BQ950

FLOOR MODEL • NO BOX

WAS: \$2,749.00 | **OUR PRICE: \$1,499.00**

BROTHER PRINT MODA

FLOOR MODEL • NO BOX

WAS: \$1,379.00 | **OUR PRICE: \$849.99**

ONLY AT OUR GREENWOOD STORE

BROTHER PS100 | FLOOR MODEL

WAS: \$249.99 | **OUR PRICE: \$179.99**

BROTHER PS200 | FLOOR MODEL

WAS: \$399.99 | **OUR PRICE: \$279.99**

BROTHER PS300 | FLOOR MODEL

WAS: \$499.99 | **OUR PRICE: \$379.99**

BROTHER PRINT MODA

FLOOR MODEL • NO BOX

WAS: \$1,379.00 | **OUR PRICE: \$849.99**



ONLY AT OUR CLARKSVILLE STORE

BROTHER PRINT MODA

FLOOR MODEL • NO BOX

WAS: \$1,379.00 | **OUR PRICE: \$849.99**

BROTHER VM 5200

FLOOR MODEL • NO BOX

WAS: \$9,199.99 | **OUR PRICE: \$6,159.99**

BROTHER 2850 – NEW IN BOX!

WAS: \$3,499.99

OUR PRICE: \$2,499.99



ASK ABOUT
OUR LOW PRICE
PROMISE!

MORE IN-STOCK! CALL FOR DETAILS:

BROTHER PR 680W 6-NEEDLE EMBROIDERY (NO BOX, NEVER USED)

WAS: \$12,999.00 | **OUR PRICE: \$10,999**

BROTHER 1250E – NEW IN BOX

WAS: \$2,349.00 | **OUR PRICE: \$1,449**

BROTHER 1850D – NEW IN BOX

WAS: \$1,499.00 | **OUR PRICE: \$1,199.00**

BROTHER SCANNCUT SDX85 – NEW IN BOX

WAS: \$399.99 | **OUR PRICE: \$249.99**

BROTHER SE 600 – NEW IN BOX

WAS: \$1,079.00 | **OUR PRICE: \$499.99**

BROTHER XP3 – FLOOR MODEL

WAS: \$20,999.00 | **OUR PRICE: \$9,999**

BROTHER PRINT MODA – FLOOR MODEL

WAS: \$1,379.00 | **OUR PRICE: \$849.99**

BROTHER PR1055X 10-NEEDLE EMBROIDERY **CALL ASAP FOR LOWEST PRICE!**

BROTHER LUMINAIRE EV1 – CLASSROOM UNIT **CALL ASAP FOR LOWEST PRICE!**

2025

Holiday

GIFT GUIDE



JANOME

November 1st – December 31st

'Tis the Season for Sewing!



CONTINENTAL M17

*with Qualified Trade-in



A.S.R.* (Accurate
Stitch Regulator)



Advanced
Engineering



Intuitive
Technology



Innovative
Convenience

SEWING, QUILTING & EMBROIDERY

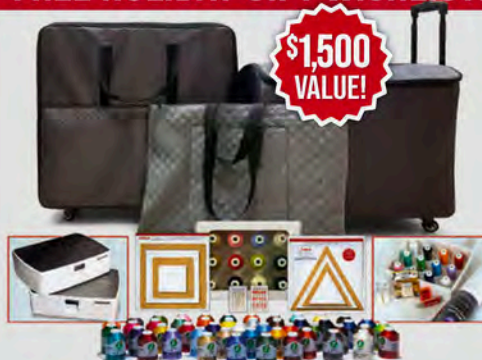
The **Continental M17** is Janome's Next Generation Combination machine, merging the best features from our most decorated models to maximize your creative potential. It boasts top of the industry's largest sewing area, now paired with an unrivaled embroidery space. With over 1,200 built-in embroidery designs and its large embroidery hoop (11.3" x 18.2"), the CM17 opens up a new world of design capabilities.

A.S.R.* Accurate Stitch Regulator



Janome's Continental M17, with A.S.R.* technology, will help take your quilting to the next level!

FREE HOLIDAY GIFT WISHLIST!



Purchase a **Continental M17** and then select up to **\$1,500** worth of your choice of accessories! Choose from custom Travel Cases, Embroidery Design Kits, A.S.R.* Cases, or a wide variety of Ruler and Thread Collections... and much more!



JANOME

All offers are valid November 1 - December 31, 2025 at participating Janome Authorized Dealers. Offers based on Manufacturer's Suggested Retail Price (MSRP) and may not be combined with any other offer. Pricing is valid with qualifying machine trade in. Void where prohibited.



CONTINENTAL M8 PROFESSIONAL



A.S.R.® (Accurate
Stitch Regulator)



Superior Needle
Threader 2



Tapering
Function



SALE
\$8,499
MSRP
\$9,999



You take your sewing passion seriously, so you deserve a machine that delivers professional results. The **Continental M8 Professional** has everything you need for Hi-Definition Quilting and Hi-Definition Sewing, plus the included A.S.R.® (Accurate Stitch Regulator) ensures that every quilting stitch you make is perfect.

Quilting and Sewing Features:

- A.S.R.® (Accurate Stitch Regulator) included
- 450 built-in stitches up to 9mm wide, including 3 fonts
- AcuFeed™ Flex Layered Fabric Feeding System
- AcuSpark2 App provides machine learning & support
- Max. sewing speed: 1,300 SPM
- 7" Color LCD Touchscreen

GIFTS WITH PURCHASE!

- Janome Scissor Set
- AcuFeed Deluxe Accessory Kit
- Edge-to-Edge Ruler Template Set
- Ruler Set (High Shank)
- Bobbin Package (500 qty.)



**\$789
VALUE!**

CONTINENTAL M6



AcuFeed™ Flex Plus
Fabric Feeding



7" Color LCD
Touchscreen



Ruler Quilting
Function



SALE
\$4,999
MSRP
\$7,999



Quilting and Sewing Features:

- AcuFeed™ Flex Plus Layered Fabric Feeding System (Optional)
- 400 built-in stitches up to 9mm wide, including 5 alphabets
- Superior Needle Threader 2
- Stitch tapering function
- Max. sewing speed: 1,300 SPM

GIFTS WITH PURCHASE!

- Extra-wide Extension Table
- HP Professional Grade Needle Plate
- AcuFeed Flex Standard Foot
- HP Professional Grade HP Foot
- Optic Magnifier Set
- Accessory Box



**\$520
VALUE!**



All offers are valid November 1 – December 31, 2025 at participating Janome Authorized Dealers. Offers based on Manufacturer's Suggested Retail Price (MSRP) and may not be combined with any other offer. Pricing is valid with qualifying machine trade in. Void where prohibited.

JANOME

Horizon Memory Craft 9480QC Professional



A.S.R.® Accurate
Stitch Regulator
Compatible (Optional)



Superior Needle
Threader 2



AcuFeed™ Flex
Layered Fabric
Feeding System



SALE
\$6,499
MSRP
\$6,999

**50% OFF
SPECIAL!**
w/ 9480QCP Purchase



A.S.R.®
Accurate
Stitch
Regulator

The legacy of the Memory Craft Series continues with the **Horizon Memory Craft 9480QC Professional**. Featuring 400 built-in stitches, 11 one-step buttonholes, and alphanumeric fonts, including 9mm lettering and numbers. Janome's 9480QCP is the first in this series to include AcuSpark2, Enhanced Superior Needle Threader 2, and to offer A.S.R.® (Accurate Stitch Regulator) as an optional accessory.

Quilting and Sewing Features:

- A.S.R.® Accurate Stitch Regulator Compatible (optional)
- Professional HP needle plate and foot
- AcuFeed™ Flex Layered Fabric Feeding System
- AcuSpark2 App provides machine learning & support

GIFTS WITH PURCHASE!

- Palm Quilting Paddles
- AcuFeed Deluxe Accessory Kit
- Edge-to-Edge Ruler Template Set
- Ruler Set (High Shank)
- Bobbin Package (500 qty.)



**\$704
VALUE!**



Horizon Memory Craft 9410QC



Enhanced
Superior Needle
Threader 2



AcuFeed™ Flex
Layered Fabric
Feeding System



Hi-Definition
5" LCD Color
Touchscreen

Janome's **Horizon Memory Craft 9410QC** features 300 built-in stitches, 11 one-step buttonholes, enhanced Superior Needle Threader 2, and a maximum sewing speed of 1,060 stitches per minute.

Quilting and Sewing Features:

- 300 built-in stitches up to 9mm wide, including 4 alphabets
- Top Loading full rotary hook bobbin system
- AcuFeed™ Flex Layered Fabric Feeding System
- Max. sewing speed: 1,060 SPM

SALE
\$3,999
MSRP
\$5,499

GIFTS WITH PURCHASE!

- Extra-wide Extension Table
- HP Professional Grade Needle Plate
- AcuFeed Flex Standard Foot
- HP Professional Grade HP Foot
- AcuFeed Open Toe Foot
- Accessory Box



**\$440
VALUE!**

JANOME

All offers are valid November 1 - December 31, 2025 at participating Janome Authorized Dealers. Offers based on Manufacturer's Suggested Retail Price (MSRP) and may not be combined with any other offer. Pricing is valid with qualifying machine trade in. Void where prohibited.





SKYLINE 
Anniversary Editions

Reach for the **SKYLINE!**
— CELEBRATING 10 YEARS —

SKYLINE

Anniversary Edition **S7**



AcuFeed™ Flex
Fabric Feeding
System



Extra-wide
Extension Table
Included

SALE
\$3,199
MSRP
\$3,399



Quilting and Sewing Features:

- Top loading full rotary hook bobbin system
- One-step needle plate conversion
- 7-Piece feed dog / Drop feed
- Superior Needle Threader 2
- Extended Sewing Application Menu
- Max. sewing speed: 1,060 SPM
- AcuFeed Flex™ Fabric Feeding System
- 350 Stitches with 10 fonts
- 11 one-step buttonholes
- Max. stitch width: 9 mm
- Max. stitch length: 5 mm
- Needle positions: 91

GIFTS WITH PURCHASE!

**\$535
VALUE!**

- AcuFeed Deluxe Accessory Kit
- Advanced Accessory Package:
Variable Zigzag Open Toe Foot
AcuFeed Deluxe Accessory Kit
1/4" Seam Foot without Guide
Open Toe Darning Foot
HP Professional Grade Needle
Plate and Foot
Ruler Foot



SKYLINE

Anniversary Edition **S6**



Extra-wide
Extension Table
Included



Automatic
Thread Cutter



One-Step
Needle Plate
Conversion

SALE
\$2,099
MSRP
\$2,299

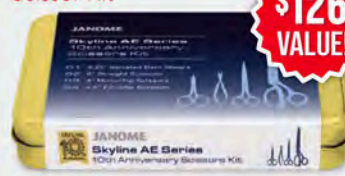
Quilting and Sewing Features:

- Top loading full rotary hook bobbin system
- Superior Needle Threader 2
- Maximum sewing speed: 1,000 SPM
- AcuFeed Flex™ Fabric Feeding System
- Needle positions: 91
- Maximum stitch width: 9 mm
- Maximum stitch length: 5 mm

GIFT WITH PURCHASE!

- Skyline 10th Anniversary Scissor Kit

**\$126
VALUE!**

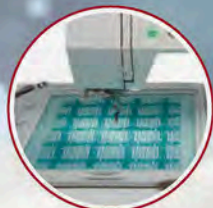


JANOME

All offers are valid November 1 – December 31, 2025 at participating Janome Authorized Dealers. Offers based on Manufacturer's Suggested Retail Price (MSRP) and may not be combined with any other offer. Pricing is valid with qualifying machine trade in. Void where prohibited.



Memory Craft 550E Limited Edition



Maximum
Embroidery Size:
7.9" x 14.2"



180 Built-in designs
and 6 fonts
for monogram



Built-in Sashiko
and Wedding
Designs



SALE
\$2,999
MSRP
\$4,999

The **Memory Craft 550E Limited Edition** opens up a new world of possibilities and is the perfect sewing companion. This machine will personalize the largest projects, easier and faster, with embroidery speeds of up to 860 SPM. Explore the rewarding joys of embroidery with 4 included embroidery hoops.

Sewing and Embroidery Features:

- Top loading full rotary hook bobbin
- Bobbin thread sensor
- AcuStitch Software included
- Extra-wide table included
- 180 Built-in embroidery designs
- Embroidery sewing speed: 400 - 860 spm
- Maximum embroidery size: 7.9" x 14"

GIFTS WITH PURCHASE!

**\$734
VALUE!**

- AcuFil Quilting Kit
- Kimberly Einmo Sashiko Kit:
4 Spools Monofilament Thread
12 Spools 60wt. Cotton Thread
Titanium Needles Assortment
Medium Weight Stabilizer
USB of Sashiko Designs
Red Tip Needles



NEW!



Horizon Memory Craft 9850 Limited Edition



Easy Pop-Up
Needle Plate
Conversion



Bobbin Winder
Plate with
Cutting Blades



Embroidery
Sewing Speed:
up to 800 SPM

SALE
\$1,799
MSRP
\$2,099

The **Memory Craft 9850 Limited Edition** lets you take your creative expression in any direction you can imagine. All the best features are here for embroidery, garment sewing, home decor, fabric crafting, and more.

Sewing and Embroidery Features:

- Superior Needle Threader 2
- Max. sewing speed: 1,000 SPM
- Max. stitch width: 9mm
- Max. stitch length: 5mm
- One-Push Needle Plate Conversion
- 173 Built-in embroidery designs
- Embroidery speed: 60 - 800 SPM
- Max. embroidery size: 6.7" x 7.9"

GIFTS WITH PURCHASE!

**\$499
VALUE!**

- Embroidery Starter Kit:
12- 600yd. Spools Hilos Iris Thread
Tear-Away Stabilizer 8" x 3 yd.
Cut-Away Stabilizer 8" x 3 yd.
Pink Bobbins 25 w/case
12- Pre-wound White Bobbins
USB with 1800+ Designs



All offers are valid November 1 - December 31, 2025 at participating Janome Authorized Dealers. Offers based on Manufacturer's Suggested Retail Price (MSRP) and may not be combined with any other offer. Pricing is valid with qualifying machine trade in. Void where prohibited.

JANOME



CoverPro 3000 Professional





Built-in Needle Threader
Ball Bearing Main Shaft
Built-in, Retractable LED Light



Enjoy professional finishing with the **CoverPro® 3000P** cover stitch machine. Equipped with a built-in top cover hem guide, you'll have the ability to create your very own industrial-quality top cover stitches with ease.

Sewing Features:

- 2 or 3 needle cover stitch
- Built-in top cover stitch function
- Enhanced Tension Level Control
- Built-in Needle Threader
- 3 bright LED lights, including retractable sewing light
- Extra-large bed space 4" x 5.5"
- Speeds up to 1,000 SPM

SALE
\$1,599
MSRP **\$1,799**

GIFTS WITH PURCHASE!

\$626 VALUE!

- Center Guide Foot (3 needles)
- Clear View Cover Stitch Foot
- Elastic Gathering Narrow Attachment (6-8.5 mm)
- Tape binder for 3 needles (32mm/8mm)
- CoverPro Workbook Addendum
- Hemming Guide
- Seam Guide
- Accessory Bag



AirThread 2000D Professional







Ball Bearing Main Shaft
One-Push Blast Air Threading System
Built-in Needle Threader

The **AirThread 2000D** Serger provides all the tools you'll need to deliver professional quality finishing. With Janome's One-Push Air Threading System, the tedious threading of upper and lower loopers is a thing of the past.

Serger Features:

- One-Push Air Threading System
- 8-Piece Feed Dog System
- Built-in One-step Converter
- Built-in Needle Threader
- Max. speed: 1,300 SPM
- 2, 3 and 4 thread convertible

SALE
\$1,499
MSRP **\$1,799**

GIFTS WITH PURCHASE!

\$370 VALUE!

- Blind Stitch Foot
- Beading Attachment
- Gathering Attachment
- Gathering Foot G
- Cording Foot-A
- Cording Foot-B
- Cloth Guide
- Piping Foot Set
- Elastic Attachment
- AT2000D Workbook
- Accessory Bag



JANOME

All offers are valid November 1 – December 31, 2025 at participating Janome Authorized Dealers. Offers based on Manufacturer's Suggested Retail Price (MSRP) and may not be combined with any other offer. Pricing is valid with qualifying machine trade in. Void where prohibited.





MB-7

Embroidery Machine

Janome's **MB-7** is the perfect tool to help conquer your next embroidery project. This innovative machine is built to work with embroidery formats used by industry professionals, such as .jef+, .jef and .dst. With 50 built-in embroidery designs and 10 fonts for monogramming, a USB port to easily import designs, and a maximum speed of 800 SPM, the possibilities are simply endless. You will be impressed with your project's professionally-finished results.



MB-4S

Embroidery Machine

We've taken everything you love about Janome embroidery and quadrupled the capacity! With our four-needle machine, you can set up your embroidery and then move on to other projects while the Janome **MB-4S** gets it done. MB-4S is built to work with most embroidery formats, including those used by industry professionals. It is compatible with six industry standard Tajima hoops, as well as the four available Janome hoops to further expand your creative opportunities.

SPECIAL OFFER!

Purchase either the **MB-7** or **MB-4S** and receive a Special Offer for the **Ava Cabinet Accessory Bundle**, valued at \$2,952, for Only **\$1,699!**

AVA CABINET



The **Ava Cabinet** offers a sturdy home for your MB-7 or MB-4S. With a built-in space for all of your embroidery projects below the machine and a spacious counter top, every embroidery project can be done quickly and easily!

Store your accessories neatly on-board and keep embroidery thread at your fingertips with the pegged drawer. The cabinet features a fully shelved side for King Spool thread storage.

Cabinet Size: 35" W x 24" H x 24" D

Iris Thread

28 King Spools
Iris Poly Thread
- MSRP: \$324

49 Mini Spools
Iris Poly Thread
- MSRP: \$310



HathoopMB4
- MSRP: \$483



All offers are valid November 1 - December 31, 2025 at participating Janome Authorized Dealers. Offers based on Manufacturer's Suggested Retail Price (MSRP) and may not be combined with any other offer. Pricing is valid with qualifying machine trade in. Void where prohibited.

JANOME

Memory Craft 6700 Professional



Easy Set
Bobbin



9 One-Step
Buttonholes



One-Step Needle
Plate Conversion



SALE
\$3,699
MSRP
\$3,999

The **Memory Craft 6700 Professional** provides the speed and precision critical to advanced sewing and contains serious features for the serious sewist. Sewing speeds of 1,200 SPM make Janome's MC6700P one of the fastest Top Loading Bobbin machines in the industry.

Quilting and Sewing Features:

- 200 Stitches plus 5 Alphabets
- Max. sewing speed: 1,200 SPM
- One-Push Needle Plate Conversion
- All-Metal seamless flatbed
- SFS Superior Feed System
- Memorized Needle Up/Down
- Professional HP Needle Plate and Foot

GIFTS WITH PURCHASE!

**\$627
VALUE!**

- Organ Needles Top Stitch TI 90
- Quilting Anti-Glue Needles
- Uni-Needles Combo 70-100
- Ultra Glide Foot and Plate 9mm
- Triangle Template Set
- Bobbin Package (500 qty.)
- AcuFeed Deluxe Accessory Kit



Sew On-the-Go!

With Janome's stylish **Travel Mate Series**, you can now take your quilting and sewing passion with you everywhere you go.



TRAVEL MATE 200



TRAVEL MATE 50



TRAVEL MATE 30



TRAVEL MATE 16



All offers are valid November 1 – December 31, 2025 at participating Janome Authorized Dealers. Offers based on Manufacturer's Suggested Retail Price (MSRP) and may not be combined with any other offer. Pricing is valid with qualifying machine trade in. Void where prohibited.





JANOME CLOSEOUT MODELS

OVER
**50%
OFF**

ONLY AT OUR CLARKSVILLE STORE

Janome MC400E

FLOOR MODEL • NO BOX

Was: \$1,999.99 | **OUR PRICE: \$899.00**

ONLY AT QUILT QUARTERS

Janome Elna 560

FLOOR MODEL • NO BOX

Was: \$1,049.00 | **OUR PRICE: \$699.00**

ONLY AT OUR LOUISVILLE STORE

Janome MC500E

NEW • IN BOX • EMBROIDERY ONLY

Was: \$2,999 | **OUR PRICE: \$1,699**

Only one in stock!

Janome MC9450

FLOOR MODEL – Only one in stock!

Was: \$5,999 | **OUR PRICE: \$3,499**

Only one in stock!

Janome 5300QDC

FLOOR MODEL – Only one in stock!

Was: \$1,399 | **OUR PRICE: \$899**

MORE IN-STOCK! CALL FOR DETAILS:

JANOME 9480

NEW IN BOX • ORIGINAL BOX

WAS: \$6,499.00 | **OUR PRICE: \$4,999.00**

JANOME 9850

NEW IN BOX • ORIGINAL BOX

WAS: \$2,499.00 | **OUR PRICE: \$1,399.00**

JANOME MYLOCK 434D SEGER

NEW IN BOX • ORIGINAL BOX

WAS: \$699.00 | **OUR PRICE: \$599.00**

JANOME TM50

NEW IN BOX • ORIGINAL BOX

WAS: \$799.00 | **OUR PRICE: \$649.00**

JANOME HD3000

NEW IN BOX • ORIGINAL BOX

WAS: \$599.00 | **OUR PRICE: \$449.00**

JANOME S9

NEW IN BOX • ORIGINAL BOX

WAS: \$4,999.00 | **OUR PRICE: \$3,499.00**

ONLY AT OUR GREENWOOD STORE

Janome AirThread 2000DP

FLOOR MODEL

Was: \$1,799.99 | **OUR PRICE: \$1,299.00**

Janome MB7 with Ava Cabinet

Reconditioned

Was: \$10,000.00 | **OUR PRICE: \$4,899.00**



 **Husqvarna®**
VIKING®



 **Husqvarna®**
VIKING®

CREATE MAGIC. GIVE SEWING.

NOVEMBER 1 – DECEMBER 25, 2025





STOCKING STUFFERS

LIMITED TIME
25% OFF

All HUSQVARNA® VIKING® Accessories & Notions

Includes: Needles, Scissors, Roller Bags, Stabilizer, Presser Feet, Extension Tables, Embroidery Hoops, and more!



mySewnet™ Embroidery Software 2021

One-time purchase software

An application for creating and editing embroidery designs - whether you're a seasoned embroidery creator or just getting started, one of our 3 levels is perfect for you!

PLATINUM **\$1,799**

GOLD **\$699**

SILVER **\$249**

mySewnet Embroidery Feature Bundle 2024

Perfect add-on for mySewnet 2021 SILVER, GOLD, or PLATINUM Level one-time purchase software to enjoy next level features: Hold-Down Stitches, More Super Designs, and Name Changer.

**NOW
\$100**



*Only at SVA,
Westport Rd
& Greenwood*

Creativity That Grows With You.

THE TOPAZ™ FAMILY



Topaz™ | 55Q



Designer Topaz™ | 65

husqvarnaviking.com



HUSQVARNA® VIKING® DESIGNER TOPAZ™ 65 Sewing & Embroidery Machine

The HUSQVARNA® VIKING® DESIGNER TOPAZ™ 65, sewing and embroidery machine. For those who want it all, adds powerful embroidery capabilities, large embroidery area.

340 Embroidery Designs

Includes 340 embroidery designs, incorporating specialty techniques. Categories for easy selection, and 8 embroidery fonts, with both upper- and lower-case letters.

Exact Position

Place and match your embroideries with this feature for accurately placed designs every time with stitch point accuracy.

Large Embroidery Area

Two embroidery hoops included with purchase: DESIGNER™ Royal Hoop 360x200 mm & DESIGNER™ Splendid Square Hoop 120x120 mm.

Specialty Technique Designs

Create projects of limitless variation with the numerous specialty embroidery techniques available in your machine. Explore Thread Velvet, Reverse and Standard Appliqué, Endless, Free-Standing, Cutwork, Felting and more.

CREATIVATE™ Connectivity*

Connect all CREATIVATE enabled devices to communicate wirelessly between them, send embroidery designs, get automatic updates, and inspiration from the design catalog. *Some CREATIVATE features require a paid membership.

JoyOS ADVISOR™

The JoyOS ADVISOR™ feature offers guidance and support and its right at your fingertips. Select your fabric type and choose from a wide selection of available sewing techniques. The JoyOS ADVISOR™ feature will instantly set the best stitch width, stitch length, thread tension/portioning, and presser foot pressure for the technique you have chosen. It also includes: Interactive Tutorials, Sewing Instructions, User's Guides and more.

*Coming soon to our
Louisville location!*



HUSQVARNA® VIKING® TOPAZ™ 55Q Sewing Machine

Let your projects sparkle.

The HUSQVARNA VIKING TOPAZ 55Q sewing machine is designed for sewists who want to advance their skills and benefit from a truly remarkable sewing machine. It is also perfect for quilters who desire unique stitching and ample space to create.

CREATIVATE™ Connectivity*

Connect all CREATIVATE enabled devices to communicate wirelessly between them, send embroidery designs, get automatic updates, and inspiration from the design catalog. *Some CREATIVATE features require a paid membership.

JoyOS ADVISOR™

The JoyOS ADVISOR feature offers guidance and support and its right at your fingertips. Select your fabric type and choose from a wide selection of available sewing techniques. The JoyOS ADVISOR feature will instantly set the best stitch width, stitch length, thread tension/portioning, and presser foot pressure for the technique you have chosen. It also includes: Interactive Tutorials, Sewing Instructions, User's Guides and more.

Large Color Touchscreen

Easily navigate on the 7" (153x85 mm) capacitive touch screen.

EXCLUSIVE SENSOR SYSTEM™

Automatically and continuously senses and adjusts to any thickness of fabric for perfect, even feeding as you sew. This includes automatic sensor foot lift, pivot and pressure.

Automatic Needle Threader

With the push of a lever the Automatic Needle Threader easily threads your needle every time while saving you time.

*Coming soon to our
Louisville location!*



VIKING CLOSEOUT MODELS

OVER
**50%
OFF**

ONLY AT OUR LOUISVILLE STORE

Viking MN 1000

FLOOR MODEL • 6 NEEDLE EMBROIDERY
Includes: net hoop, cap & frame driver, and multiple hoops

Was: \$14,999 | **OUR PRICE: \$8,999**

Only one in stock!

Viking HClass E20

FLOOR MODEL - Only one in stock!

Was: \$349 | **OUR PRICE: \$179**

Viking Brilliance 75

FLOOR MODEL - Only one in stock!

Was: \$4,299 | **OUR PRICE: \$2,999**

Viking Opal 6900

(Certified Pre-Owned) - Only one!

Was: \$2,199 | **OUR PRICE: \$1,299**

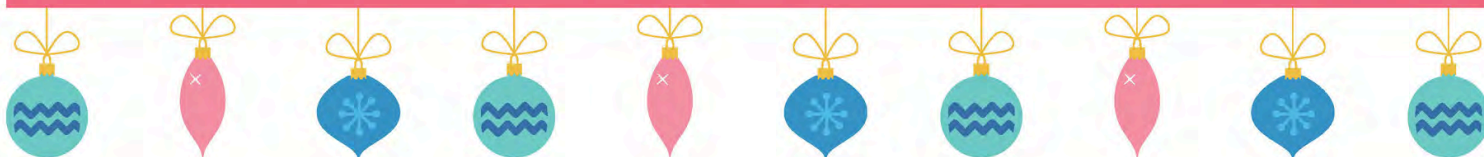


Merry ~~HAPPY~~ SEWING!

ARROW
SEWING

HOLIDAY GIFT GUIDE 2025

ARROW
SEWING



*Kangaroo & Joey Sewing Cabinet
in Ash White, p. 3*



*America's #1 Rated Sewing Chair in
"Sew Wow, Sew Now!" print, p. 10-11*



*Kiwi storage caddy
in Ash White, p. 9*

SPECIALS GOOD OCTOBER 31 - JANUARY 1

DAYLIGHT SLIMLINE
FLOOR LAMP
**\$337 VALUE
FREE***

WE'RE WISHING YOU THE **BRIGHTEST** OF HOLIDAYS WITH OUR SPECIAL GIFT TO YOU!



Purchase a select Kangaroo Sewing Cabinet* and receive a beautiful, practical Daylight Slimline 3 Floor lamp. Just like Kangaroo Sewing Cabinets, the Daylight Slimline 3 Floor lamp boasts a simple, elegant design and superior functionality. Adjust the brightness to your liking with the convenient four-step dimmer, position the shade effortlessly with sleek, flexible joints, and say goodbye to tired eyes as you banish the shadows and beautifully illuminate your creations in progress. A \$337 value.

*Offer good on Aussie, Aussie EL, Kangaroo & Joey, Kangaroo & Joey EL, Wallaby, Wallaby EL, Sydney/Sydney Lite XLH and XLE and on Melbourne XLH and XLE.



Hydraulic Lift
MSRP \$2,899.99
\$2,199.99
Save \$700

Electric Lift
MSRP \$3,499.99
\$2,699.99
Save \$800

Aussie

A Quilter's Paradise

Aussie offers innovative storage and a customizable workspace configuration thanks to the multi-position pull-out caddy. Clever door bins and a truly generous workspace make this cabinet and caddy set a smart addition to your creative space. Sew your way, with comfort and convenience. Available in Hydraulic or Electric Lift. Includes Daylight Slimline Floor Lamp!

Ash White

Teak

*Additional shipping charges for Alaska, Hawaii & Puerto Rico.

**MSRP (Manufacturer's Suggested Retail Price) at participating dealers from 10/31/2025 - 01/31/2026



Hydraulic Lift
MSRP \$2,899.99
\$2,199.99
Save \$700

Electric Lift
MSRP \$3,499.99
\$2,699.99
Save \$800

FREE

Kangaroo & Joey

Ash White

Teak

Gray

Our bestseller for good reason!

Generous storage drawers in the Joey caddy hold all your supplies, notions, and odds & ends and pulls out to provide additional work surface, while the Kangaroo offers all the support you need for larger projects. When it's time to put your sewing away, simply fold it down, tuck the Joey away, and marvel at how much workspace can fit in such a home-friendly footprint. Available in Hydraulic or Electric Lift. Includes Daylight Slimline Floor Lamp!

DAYLIGHT SLIMLINE
FLOOR LAMP

**\$337 VALUE
FREE***

*Offer good on Aussie, Aussie EL, Kangaroo & Joey, Kangaroo & Joey EL, Wallaby, Wallaby EL, Sydney/Sydney Lite XLH and XLE and on Melbourne XLH and XLE.



Hydraulic Lift
MSRP \$2,399.99
\$1,799.99
Save \$600

Electric Lift
MSRP \$2,999.99
\$2,299.99
Save \$700

Wallaby

Full-sized features, home-friendly footprint

Wallaby is full-sized cabinet with a surprisingly small footprint! The clever door and worksurface design gives you plenty of room to spread out with generous right side extension leaf and rear quilt leaf, and all-important left-side support for those larger, bulkier projects. With a cubby large enough to hold a serger and a full-view, soft-close drawer deep enough to store extra thread spools and even more thread storage on the right side door, you'll never have to go hunting for a fresh spool again! The clever door bin holds scraps, notions, odds and ends, and anything else you need to keep close at hand.

Available in Hydraulic or Electric Lift. Includes Daylight Slimline Floor Lamp!



Ash White



Teak

*Additional shipping charges for Alaska, Hawaii & Puerto Rico
**MSRP (Manufacturer's Suggested Retail Price) at participating dealers from 10/31/2025 - 01/01/2026

TWO SYDNEY OPTIONS FOR THE MARKET'S BIGGEST MACHINES

Choose from the Sydney or Sydney Lite, both available with Hydraulic or Electric Lift and a capacity of up to 65 lbs!

Sydney XL

Miles of work surface

Innovative storage solutions and miles of worksurface come standard with the Sydney Quilting and Embroidery Cabinet, along with an impressive array of handy features, including a convertible space for storing your embroidery arm! Over 6' wide and 5' deep when fully extended, Sydney folds to just 5' x 2.5'. Includes Daylight Slimline Floor Lamp!



Hydraulic Lift
MSRP \$3,299.99
\$2,499.99
Save \$700

Electric Lift
MSRP \$3,999.99
\$2,999.99
Save \$1,000

FREE

Sydney Lite

Simplified Design for Faster Sewing Setup

Everything you love about the original Sydney, streamlined! Sydney Lite eliminates the 3-panel door for a more maneuverable, home-friendly footprint. This hard-working cabinet retains the Sydney's storage features and expansive worksurface, without the extra bulk. Includes Daylight Slimline Floor Lamp!



Hydraulic Lift
MSRP \$3,299.99
\$2,499.99
Save \$700

Electric Lift
MSRP \$3,999.99
\$2,999.99
Save \$1,000

FREE

Both cabinets available in the following finishes:



Ash White



Teak



Gray

*Assembled cabinets not able to be shipped to Alaska, Puerto Rico or Hawaii.
**MSRP (Manufacturer's Suggested Retail Price) at participating dealers from 10/31/2025 - 01/01/2026

DAYLIGHT SLIMLINE
FLOOR LAMP
**\$337 VALUE
FREE***

NEW! MELBOURNE

Big Dreams, Small Space

The Melbourne Sewing Cabinet is designed for makers who need maximum functionality in minimal space. With a spacious machine opening, quilt leaves and smart storage, it adapts beautifully to any creative flow. Includes Daylight Slimline Floor Lamp!



CONFIGURE YOUR SEWING SPACE YOUR WAY

Introducing 2 new cabinets that work together or apart, for maximum flexibility in your sewing space.

Hydraulic Lift
MSRP \$2,359.99
\$1,799.99
Save \$560

Electric Lift
MSRP \$3,099.99
\$2,299.99
Save \$800



NEW! ADELAIDE

Your Sewing BFF

Smart, sleek, and built for creative flow. With soft-close drawers, removable organizers, and a collapsible quilt leaf, Adelaide keeps your sewing essentials tidy and your workspace flexible.

MSRP \$1,179.99
\$899.99
\$280



Reg \$1,399.99

\$799.99

Save \$600 off MSRP

Harriet

**An organizer's dream
with drawers galore**

*Opens to 82.63" x 19.88" and
closes to 41.25" x 19.88"*



Ash White



Teak



Upgrade Your Lift

Get an electric lift for your Wallaby, Aussie or Kangaroo cabinet! Move your machine with the touch of a button with 4-position programmable lift, remote control included. Easy to install - step by step instructions included and video guide available.



Reg \$499.99

\$399.99

Save \$100 off MSRP

Kookaburra

OUR PREMIER CUTTING TABLE!

This cutting table offers 70" x 40" of worksurface with leaves fully extended, and folds down to just 20" x 40". Wide, deep drawers on one side of the table offer full-view, soft-close storage, while adjustable shelves on the opposite side give you much-needed open storage. Kookaburra also doubles as a roomy, convenient standing-height pressing station: to get you off to a quick start on all your cutting and ironing tasks, you'll receive a FREE 66" x 36" cutting mat and a beautifully handcrafted IronMatik® pressing set, which includes a 7-layer pressing pad and a 9-layer steam mitt. Transform your Kookaburra into an instant cutting and pressing station without any damage to the finish!



FREE
Cutting Mat &
Ultimate Pressing set
\$330 Value



Kookaburra MSRP \$1,699.99,
plus Cutting Mat & Pressing set \$330

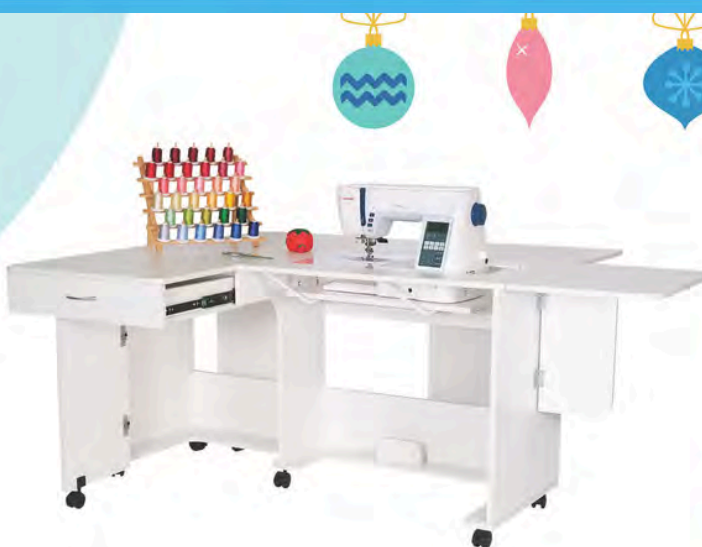
\$1,299.99

Save \$400 off MSRP

Reg \$1,899.99

\$999.99

Save \$900 off MSRP



Christa

Designed by Award
Winning Quilter
Christa Watson and
ready for your next
flash of inspiration

Opens to 71-5/8" x 40" and
closes to 56-1/2" x 22-5/8"

*Additional shipping charges for Alaska, Hawaii & Puerto Rico.
**MSRP (Manufacturer's Suggested Retail Price) at
participating dealers from 10/31/2025 - 01/01/2026



Teak



Gray



Ash White

*Additional shipping charges for Alaska, Hawaii & Puerto Rico.
**MSRP (Manufacturer's Suggested Retail Price) at
participating dealers from 10/31/2025 - 01/01/2026

Reg \$799.99

\$499.99

Save \$300 off MSRP

Kiwi

Everybody's favorite storage caddy fits just right under the tree

Includes pressing mat, cutting mat, and 2 removable thread storage units



Our Sewing Chairs Are A Holiday Wish Come True

Take a seat, take a spin, and fall in love with the #1 Rated Sewing Chair in America!

The Original Arrow sewing chair is height-adjustable from 18" - 22" and has perfectly placed lumbar support for hours of comfort. The 5-star base, durable, easy-roll casters and sturdy construction provide stability and longevity. And don't forget that handy secret seat compartment!

PLAYFUL PRINTS

Sewing Notions



Bright Buttons



Cat's Meow



Good Dog!



Sew Wow, Sew Now!



Reg \$479.99

\$329.99

Save \$150 off MSRP



STYLISH SOLIDS

Lady Gray



Duchess Blue



Princess Hazel



Madame Scarlet



Royal Purple



Baroness Black



America's
#1 RATED
Sewing Chair
★ ★ ★



HORN

of AMERICA.
FINE SEWING FURNITURE



2025 CATALOG



Choosing the Right Sewing Cabinet:

Choosing the right sewing cabinet for your needs can be rewarding and fun! Perhaps you've just purchased a new machine or you would simply like to retire the kitchen table as your workspace. Either way, getting organized with a Horn of America sewing cabinet will facilitate your comfort, creativity, and productivity.

Because you take sewing, embroidery, and quilting seriously, you have probably wondered:

"Do I have room for a sewing cabinet?" **YES!**

"Will I actually use a sewing cabinet?" **YES!**

We know that your sewing needs are unique and we have found that many sewists will sew more and exercise their creativity in new ways if their sewing materials are in one dedicated location. Sew more, sew longer, sew in comfort – all in your dedicated creative space!

How To Choose The Right Cabinet For You:

- 1)How much space in your sewing room do you have to dedicate to a sewing cabinet? Sewing cabinets come in all shapes and sizes, and there is sure to be one that fits your needs.
- 2)What size is your machine? Cabinets offer assorted size openings, lift types, and weight capacities to accommodate different machines.
- 3)Would it be convenient to do your sewing and serging in one workspace?
- 4)Does the cabinet have a lift mechanism so you can switch from free arm to flat bed sewing and a third storage position?
- 5)Do you want a cabinet that completely closes when not in use to conserve space and protect your machine, or will you leave your machine up all the time?
- 6)How much storage would you like? Do you plan to store your thread, sewing tools, and fabric in your cabinet?
- 7)Do you often make larger projects like quilts? A drop leaf extension would provide a larger work surface and reduce the amount your quilt hangs over the edge and pulls at your needle.

Flatbed with Insert



Freearm



Upgrade Your Sewing Experience with a Horn of America Machine Insert

A custom acrylic insert transforms your sewing cabinet by:

- Eliminating gaps between machine and work surface
- Ensuring smooth fabric flow
- Creating an ergonomic workspace
- Reducing wrist strain

Each insert is precision-engineered for your specific machine and cabinet model to maximize comfort and efficiency.

Horn furniture includes many standard features:

- Melamine mar-resistant and water-resistant surface, to give you years of use.
- 6 outlet power strip, so you have one place to plug in your machines, iron, lights, and devices.
- Easy Roll lockable casters so you can position your Horn cabinet where you want it.
- **Whisper Quiet electric lift** that allows you to position your machine in free arm, flatbed, or storage position by pressing a button. Our Whisper Quiet Electric lift is designed to hold large heavy machines up to the **weight limit of 80 Lbs.**
- Hinged drop leaves, swing-up tables, and drawer extension panels give you an expandable work surface (varies by model). These features allow for a very versatile multipurpose cabinet to cut, piece, or add a second sewing machine.
- Soft rounded banded edges that will not snag delicate fabric as you sew.
- **Horn Cabinets come completely assembled**, add the casters, position, and sew.
- Custom inserts are available for all models (Sold Separately).
- **All Horn sewing cabinets are manufactured in the USA in our factory in Sutton, West Virginia . We support American jobs and independent retailers across the country.**
- **All Horn cabinets and tables are protected by a limited lifetime warranty.**

Model 9100 New Heights



Model 910EXT includes:
15"x 25-3/4" angled drawer extension
sold separately

Description

Our Model 9100 gives you the capability to sit or stand while sewing and a huge work surface for cutting, piecing or embroidery. The Model 9100 also features an innovative Magic Corner filler panel, so you never have to worry about your fabric falling “down the hole.” The Model 9100 is the perfect all-purpose creative sewing table.
(Cutting mat sold separately)
(Model 910EXT sold separately)


White(.80)


Sunrise Maple(.90)


Sunset Maple(.91)


Gray(.92)

Dimensions	Open	Closed
Width	72-1/2"	60"
Depth	36"	26"
Height	29"- 40"	29"- 40"
Cut-out	31" x 15-1/2"	
Weight	260 lbs	

Features

- **Height Adjustable:** The 9100 can be adjusted between a sitting position of 29" to a standing position of 40" with the touch of a button. With three customizable memory settings, you can be ready to cut, sew, or embroider in seconds.
- **31" Wide Machine Cut-Out:** The 31" x 15-1/2" Fits large machines including popular models like the Baby Lock Radiance, Brother Aveneer EV1, BERNINA 990, and Janome M17.
- **Multipurpose:** Need to cut large pieces of fabric? No problem with the 9100! Just lower your machine to the storage position, replace the filler panel, and you have a large 72-1/2" x 36" surface to work on.
- **Magic Corner:** One unique feature of the 9100 is the Magic Corner filler panel that fills the space between the left and back drop leaves. You never have to worry about your fabric falling down the gap while you are sewing.

NEW FOR 2025!

Model 9090



Description

The **NEW** Model 9090 Sewing Cabinet is the ultimate sewing center, designed to offer a convenient and expandable work surface for all your sewing needs. It provides easy access to your tools and materials, keeping everything within reach for maximum efficiency.

The spacious swing-up table can comfortably accommodate a sewing machine or serger (up to 45 lbs), a pressing mat, or a cutting mat. With everything organized in one location, the Model 9090 makes sewing easier and more enjoyable.



Dimensions	Open	Closed
Width	78"	63-1/4"
Depth	64-1/4"	27"
Height	29-3/4"	
Cut-out	34" x 15-1/2"	
Weight	282 lbs	

Features

- **34" Wide Machine Cut-Out:** Fits the largest modern machines including popular models like the Baby Lock Radiance, Brother Aveneer EVI, BERNINA 990, and Janome M17.
- **Embroidery Hoop Pull-Out:** This makes it simple to use and store even the largest embroidery hoops.
- **Adjustable Shelf Space:** Converts into embroidery module storage that accommodates many of today's popular embroidery units.
- **Swing-Up Table:** Provides extra workspace when needed, and easily folds out of the way when not in use.
- **Drawer Extension:** Adds 18-3/8" W x 17" D of extra work surface for even more sewing space.
- **Three Soft-Closing Drawers:** Provides smooth, quiet, and convenient storage for your sewing tools and supplies.



NEW FOR 2025!

Model 9479



Description

Ideal for taller sewist, the **NEW** Model 9479 sewing cabinet stands at 36-1/2 inches, offering an ergonomic design for maximum comfort and the perfect sewing position. This versatile cabinet features a swing-up side platform and table, providing extra workspace for a second machine, serger (up to 45 lbs), cutting mat, or pressing mat. The removable foot control platform allows customizable pedal height, ensuring a tailored sewing experience. Designed for functionality and comfort, the **NEW** Model 9479 is a must-have for taller individuals seeking a seamless and organized sewing space.



White(.80)



Sunrise Maple(.90)



Sunset Maple(.91)



Gray(.92)

Dimensions	Open	Closed
Width	78"	63-1/4"
Depth	64-1/4"	27"
Height	36-1/2"	
Cut-out	34" x 15-1/2"	
Weight	342 lbs	

Features

- **Swing-Up Table:** Provides extra workspace when needed, and easily folds out of the way when not in use.
- **Embroidery Hoop Pull-Out:** Makes it simple to use and store even the largest embroidery hoops.
- **Adjustable Shelf Space:** Converts into embroidery module storage that accommodates many of today's popular embroidery units.
- **34" Wide Machine Cut-Out:** Fits the largest modern machines including popular models like the Baby Lock Radiance, Brother Aveneer EV1, BERNINA 990, and Janome M17.
- **Countertop Height:** At 36-1/2" high this cabinet stores the Viking Epic embroidery module.
- **Drawer Extension:** The left drawer extension adds an extra 18-3/8" W x 17 D" work surface.
- **Four Soft-Closing Drawers:** Provides smooth, quiet, and convenient storage for your sewing tools and supplies.

NEW FOR 2025!

Model 9080



Description

The **NEW** Model 9080 sewing center is great for smaller spaces, with its compact design and space-saving footprint. The 9080 is easy to move and position where you need it, making it a flexible addition to any room.

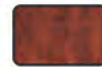
The expandable work surface provides ample room for your largest projects, and your sewing essentials stay close at hand in one convenient location. With thoughtful storage solutions and a sturdy build, the 9080 helps you stay organized and focused. Now you can create with confidence.



White(.80)



Sunrise Maple(.90)



Sunset Maple(.91)



Gray(.92)

Dimensions	Open	Closed
Width	63-1/4"	63-1/4"
Depth	40"	27"
Height	29-3/4"	
Cut-out	34" x 15-1/2"	
Weight	227 lbs	

Features

- **34" Wide Machine Cut-Out:** Fits the largest modern machines including popular models like the Baby Lock Radiance, Brother Aveneer EV1, BERNINA 990, and Janome M17.
- **Embroidery Hoop Pull-Out:** Makes it simple to use and store even the largest embroidery hoops.
- **Adjustable Shelf Space:** Converts into embroidery module storage that accommodates many of today's popular embroidery units.
- **Drawer Extension:** Adds 18-3/8" W x 17" D of extra work surface for even more sewing space.
- **Three Soft-Closing Drawers:** Provides smooth, quiet, and convenient storage for your sewing tools and supplies.



NEW FOR 2025!

Model 9050



Description

If you're working with limited space but need a cabinet that can comfortably fit today's largest sewing machines, the **NEW** Model 9050 is the perfect solution. This compact sewing center is designed to maximize functionality in small spaces, offering convenient storage options, rear drop leaf, left-side swing-up table, and a bifold door for easy access. Ideal for shared spaces, it combines style and practicality into one streamlined unit.



Dimensions	Open	Closed
Width	64-1/4"	53"
Depth	40"	27"
Height	29-3/4"	
Cut-out	34" x 15-1/2"	
Weight	215 lbs	

Features

- **Swing-Up Table:** Provides extra workspace when needed, and easily folds out of the way when not in use.
- **Embroidery Hoop Pull-Out:** Makes it simple to use and store even the largest embroidery hoops.
- **Adjustable Shelf Space:** Converts into embroidery module storage that accommodates many of today's popular embroidery units.
- **Spacious & Accessible:** Thanks to the new 34" cutout, users now enjoy more leg room than ever before.
- **34" Wide Machine Cut-Out:** Fits the largest modern machines including popular models like the Baby Lock Radiance, Brother Aveneer EV1, BERNINA 990, and Janome M17.



NEW FOR 2025!

Model 9030



Description

The **NEW** Model 9030 is the ultimate space-saving solution for those needing a cabinet that fits today's largest sewing machines. Designed with efficiency in mind, it features adjustable shelving and dedicated storage for embroidery hoops. The rear drop leaf and left-side swing-up table provide an expandable work surface for large projects. Plus, you get more leg and knee room than ever before in a compact cabinet.



White(.80)



Sunrise Maple(.90)



Sunset Maple(.91)



Gray(.92)

Dimensions	Open	Closed
Width	64-1/4"	53"
Depth	40"	27"
Height	29-3/4"	
Cut-out	34" x 15-1/2"	
Weight	184 lbs	

Features

- **Swing-Up Table:** Provides extra workspace when needed, and easily folds out of the way when not in use.
- **Embroidery Hoop Pull-Out:** Makes it simple to use and store even the largest embroidery hoops.
- **Adjustable Shelf Space:** Converts into embroidery module storage that accommodates many of today's popular embroidery units.
- **Spacious & Accessible:** Thanks to the new 34" cutout, users now enjoy more leg room than ever before.
- **34" Wide Machine Cut-Out:** Fits the largest modern machines including popular models like the Baby Lock Radiance, Brother Aveneer EV1, BERNINA 990, and Janome M17.



Model 8280



Description

The Model 8280, continues the tradition of the popular “Quilter’s Dream” cabinet, with a 31” x 15-1/2” opening that can accommodate today’s larger quilting machines. It includes a large drawer extension, a 14” drop-leaf, and a right-side swing-up extension, providing ample space for even the largest quilting projects.



White(.80)



Gray(.92)

Dimensions	Open	Closed
Width	74-5/8”	60”
Depth	56”	27”
Height	29 3/4”	
Cut-out	198 lbs	
Weight	31” x 15-1/2”	

Features

- **31” Wide Machine Cut-Out:** The 31” x 15-1/2” Fits large machines including popular models like the Baby Lock Radiance, Brother Avener EV1, BERNINA 990, and Janome M17.
- **Open Front Design:** The open front design adds more leg room giving you a more comfortable and accessible sewing cabinet.
- **Drawer Extension:** Adds 25-1/8” x 16” of extra work surface for even more sewing space.
- **Swing-Up Table:** Provides extra workspace when needed, and easily folds out of the way when not in use.

Model 51 Caddie

Sold Separately



MODEL 5400

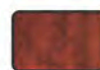


Description

Are you searching for a great compact sewing cabinet? The Model 5400 is an excellent option. This cabinet features four drawers and a 25 x 13 cut-out that can accommodate most mid-size sewing machines. The bifold doors allow you to close the cabinet when not in use, making it an ideal choice for those looking for a space-saving solution.

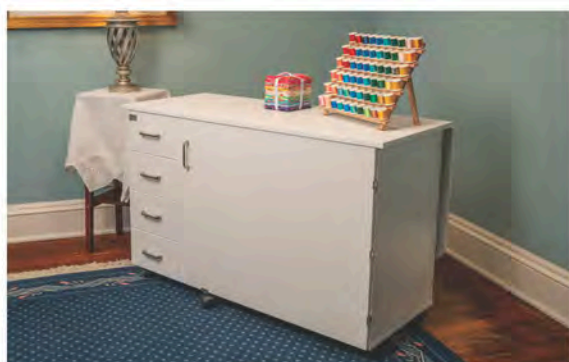


White(.80)



Sunset Maple(.91)

Dimensions	Open	Closed
Width	48"	48"
Depth	39-1/2"	20-1/2"
Height	29-3/4"	
Cut-out	25" x 13"	
Weight	184 lbs	



Features

- **25" Wide Machine Cut-Out:** The 25" x 13" opening fits most medium sized sewing machines.
- **Maneuverable:** Weighing in at 193 lbs, the 5400 is lighter than most cabinets, allowing it to easily be pulled out from a wall to setup the drop leaf.
- **Protect Your Machine:** When the machine is stored, the drop leaf is down, and the door is closed, the 5400 transforms into a console table.

Model 4200



Description

Meet the versatile, space-saving workstation you've been waiting for—Model 4200. Its convenient drop leaf seamlessly doubles your work surface, ensuring ample room when you need it most, while adjustable shelving provides customizable storage solutions to keep you organized. Enjoy the whisper-quiet reliability of Horn's renowned Electric Lift and the peace of mind offered by a product proudly made in the USA. Backed by Horn of America's Limited Lifetime Warranty, the Model 4200 is built to elevate your workspace for years to come.



White(.80)

Dimensions	Open	Closed
Width	41-3/4"	41-3/4"
Depth	39-1/4"	20-1/2"
Height	29-3/4"	
Cut-out	25" x 13"	
Weight	175 lbs	

Model 40 Caddie



Description

The Model 40 Caddie is specifically designed as a companion to the Model 4200 and Model 4100 cabinets. The included drop leaf provides a significant workspace upgrade and the four spacious drawers offer generous storage space.



White(.80)

Dimensions:

Open: 40" Width x 39-1/4" Depth x 29-3/4" Height

Closed: 40" Width x 20-1/2" Depth x 29-3/4" Height

Weight: 109 lbs

Model 7600



Description

The Model 7600 Deluxe Storage Chest is the perfect piece for the sewist or embroiderer who can appreciate the convenience of an all-in-one storage and work center. Model 7600 storage chest includes a large rear drop leaf that turns the top surface into an expansive work station suitable for any cutting, sewing or quilting project.

(Cutting mat sold separately)

The addition of the included rear shelf turns the 7600 into a storage island.



White(.80) Sunrise Maple(.90) Sunset Maple(.91) Gray(.92)

Dimensions	Open	Closed
Width	60"	60"
Depth	40"	21"
Height	35"	
Cut-out		
Weight	280 lbs	

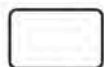
Features

- 7 adjustable shelves
- 7 drawers on nylon rollers
- 2 bifold swing away doors
- Pull-out thread storage system





Model 2211



White(.80)



Model 2211 offers a 72" x 40" cutting surface when opened. There are two drawers to store cutting tools and space underneath to keep bolts of fabric.

(Cutting mat sold separately)

Dimensions:

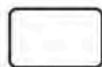
Open: 72" Width x 40" Depth x 35" Height

Closed: 17" Width x 40" Depth x 35" Height

Weight: 133 lbs.



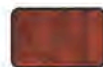
Model 90



White(.80)



Sunrise Maple(.90)



Sunset Maple(.91)



Gray(.92)

Model 90 Caddie has a 27" depth to store most embroidery modules currently available. The 90 includes three drawers, three adjustable shelves, and thread storage that can be removed and used as hoop storage.

Dimensions:

Open: 40" Width x 27" Depth x 29-3/4" Height

Closed: 40" Width x 27" Depth x 29-3/4" Height

Weight: 198 lbs



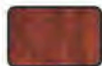
Model A680



White(.80)



Sunrise Maple(.90)



Sunset Maple(.91)

Model A680 is a multiuse cutting cabinet offering storage and work space. It's built specifically for fabric cutters and features two drop leaves for plenty of work space, shelves for storage, and dividers for organizing dies.

(Cutting mat sold separately)

Dimensions:

Open: 68" Width x 27" Depth x 37-1/4" Height

Closed: 32-1/2" Width x 27" Depth x 37-1/4" Height

Weight: 152 lbs.



Model 51



White(.80)



Gray(.92)

Designed as the companion caddie to the Quilter's Dream series, the 51 caddie is also a great standalone piece. The Model 51 has four drawers for storing everything from thread and bobbins to sewing machine components, and everything in between.

Dimensions:

22" Width x 17-3/4" Depth x 24-1/4" Height

Weight: 62 lbs.



HORN FLASH DEALS

SAVE
20%

Sewing & Embroidery Cabinets

Horn Model 9479 Combo Cabinet – Sewing/Embroidery/Serger Cabinet

Finish Options: White, Sunrise Maple, Sunset Maple, Gray

Dimensions: 64"W (78.75" Open) x 27"D (69.625" Open) x 36.5"H

Was: \$5,749.00 | OUR PRICE: \$4,599.00

Horn Model 9090 Combo Cabinet – Sewing/Embroidery Cabinet

Finish Options: White, Sunrise Maple, Sunset Maple, Gray

Dimensions: 63.25"W (78" Open) x 27"D (64.25" Open) x 29.75"H

Was: \$4,999.00 | OUR PRICE: \$3,999.00

Horn Model 9080 Combo Cabinet – Sewing/Embroidery Cabinet

Finish Options: White, Sunrise Maple, Sunset Maple, Gray

Dimensions: 63.25"W (63.25" Open) x 27"D (40" Open) x 29.75"H

Was: \$4,499.00 | OUR PRICE: \$3,599.00

Horn Model 9050 Sewing/Embroidery Cabinet

Finish Options: White, Sunrise Maple, Sunset Maple, Gray

Dimensions: 53"W (64.25" Open) x 27"D (40" Open) x 29.75"H

Was: \$3,749.00 | OUR PRICE: \$2,999.00

Horn Model 8280 Sewing/Embroidery Cabinet

Finish Options: White, Gray

Dimensions: 60"W (74.625" Open) x 27"D (56" Open) x 29.75"H

Was: \$3,749.00 | OUR PRICE: \$2,999.00

Horn Model 5400 Sewing Cabinet

Finish Options: White, Sunset Maple

Dimensions: 48"W x 20.5"D (39.5" Open) x 29.75"H

Was: \$3,048.00 | OUR PRICE: \$2,438.00

Horn Model 4200 Sewing Cabinet

Finish Options: White

Dimensions: 41.75"W x 20.5"D (39.25" Open) x 29.75"H

Was: \$1,999.00 | OUR PRICE: \$1,599.00

Horn Model 7600 Ultimate Storage Center

Finish Options: White, Sunrise Maple, Sunset Maple, Gray

Dimensions: 60"W x 21"D (40" Open) x 35"H

Was: \$2,999.00 | OUR PRICE: \$2,398.00

Horn Model 9030 Sewing/Embroidery Cabinet

Finish Options: White, Sunrise Maple, Sunset Maple, Gray

Dimensions: 53"W (64.25" Open) x 27"D (40" Open) x 29.75"H

Was: \$3,499.00 | OUR PRICE: \$2,799.00



HORN FLASH DEALS

SAVE
20%

Adjustable & Sewing Tables

Horn Model 9100 New Heights Adjustable Table – Floor Model

Finish Options: White, Sunrise Maple, Sunset Maple, Gray

Height Adjustable: 29"–40" • Dimensions: 60"W (72.5" Open) x 26"D (36" Open)

Was: \$5,099.00 | OUR PRICE: \$4,079.00

Horn Model 910EXT Drawer Extension (For Model 9100)

Finish Options: White, Sunrise Maple, Sunset Maple, Gray

Was: \$132.00 | OUR PRICE: \$106.00

Horn Model 2211 Cutting Table with Drawer

Finish Options: White

Dimensions: 17"W (72" Open) x 40"D x 35"H

Was: \$1,345.00 | OUR PRICE: \$1,076.00

Horn Model A680 Quilter's Block Center

Finish Options: White, Sunrise Maple, Sunset Maple

Dimensions: 32.5"W (68" Open) x 27"D x 37.25"H

Was: \$1,739.00 | OUR PRICE: \$1,391.00



Storage Furniture & Caddies

Horn Model 90 Embroidery Storage Chest

Finish Options: White, Sunrise Maple, Sunset Maple, Gray

Dimensions: 40"W x 27"D (40" Open) x 29.75"H

Was: \$2,139.00 | OUR PRICE: \$1,711.00

Horn Model 51 Quilter's Dream Caddie

Finish Options: White, Gray

Dimensions: 22"W x 17.75"D x 24.25"H

Was: \$999.00 | OUR PRICE: \$799.00

Horn Model 40 Caddie

Finish Options: White

Dimensions: 24"W x 20.5"D (39.25" Open) x 29.75"H

Was: \$999.00 | OUR PRICE: \$799.00





HORN FLASH DEALS

SAVE
20%

Chairs

Horn Deluxe Adjustable Sewing Chair (Model 17090C)

Finish Options: Black with Blue, Tan, Burgundy, Purple, or Black Upholstery

Was: \$498.00 | **OUR PRICE: \$398.00**

Inserts & Trays

Horn Thread Tray (Model 96046)

Fits Models 16 & 2155

Dimensions: 22.5"W x 15.625"D x 0.75"H

Single Tray – Was: \$39.00 | **OUR PRICE: \$31.20**

5-Pack – Was: \$148.00 | **OUR PRICE: \$118.40**

Horn Thread Tray (Model 99087)

Fits Models 51, 62, 63, 3280, 5280, 7500,

7600, 8080, 8090, 8390, 8479

Dimensions: 18.5"W x 14.625"D x 0.75"H

Single Tray – Was: \$39.00 | **OUR PRICE: \$31.20**

5-Pack – Was: \$148.00 | **OUR PRICE: \$118.40**



Plexiglass Sewing Inserts

(Refer to brand/model for correct insert compatibility)

- 18-13/16" x 11-3/16" – Was: \$197.50 | **OUR PRICE: \$158.00**
- 24" x 12.5" (Fits Models 2139, 2178, 3140, 3156, 3180) Optional Flame Polish Finish +\$25 – Was: \$123.00 | **OUR PRICE: \$98.40**
- 25" x 13" (Fits Models 3240–5680) Optional Flame Polish Finish +\$25 – Was: \$148.00 | **OUR PRICE: \$118.40**
- 27" x 15.5" (Fits Models 6278–6440) – Was: \$175.00 | **OUR PRICE: \$140.00**
- 31" x 15.5" (Fits Models 8030–9100) – Was: \$248.00 | **OUR PRICE: \$198.40**
- 34" x 15.5" (Fits Models 9030–9479) – Was: \$248.00 | **OUR PRICE: \$198.40**



HORN FLASH DEALS

SAVE
20%

Cutting Mats

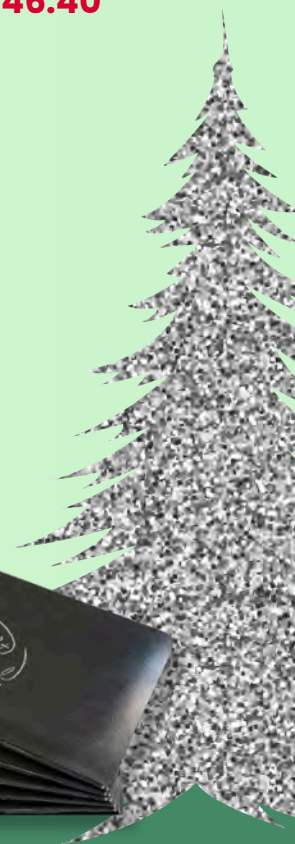
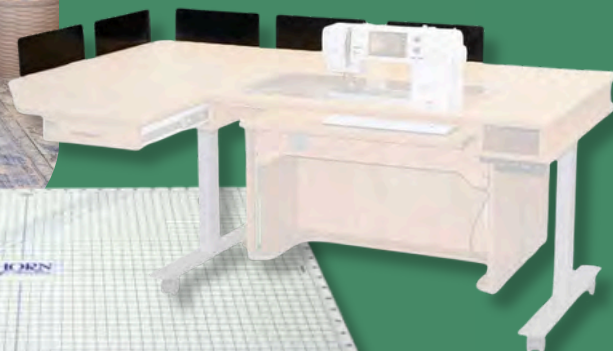
Horn Cutting Mats – White with Horn of America Logo

- 36" x 60" (Fits Models 9000, 9100) – Was: \$183.00 | **OUR PRICE: \$146.40**
- 40" x 72" (Fits Model 2111) – Was: \$208.00 | **OUR PRICE: \$166.40**
- 40" x 60" (Fits Models 6278–8479, 7600) – Was: \$183.00 | **OUR PRICE: \$146.40**
- 27" x 68" (Fits Model A680) – Was: \$175.00 | **OUR PRICE: \$140.00**

Quilting Accessories

Quilt Corral Packs

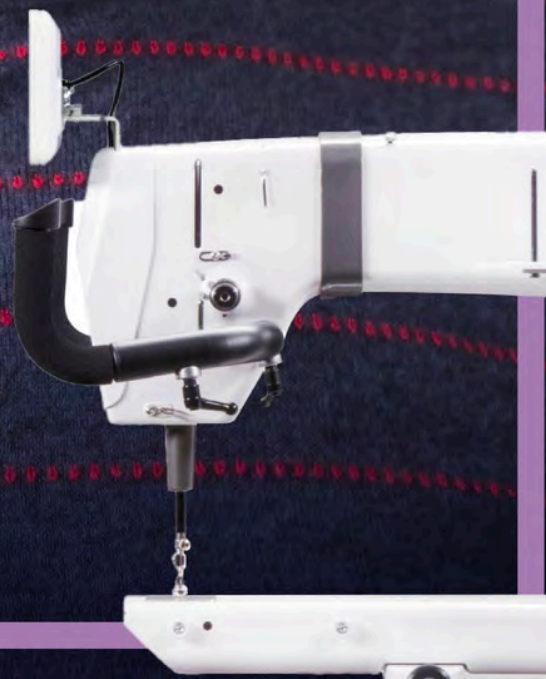
- 5-Pack (Black or White Finish) – Was: \$109.00 | **OUR PRICE: \$87.20**
- 8-Pack (Black or White Finish) – Was: \$159.00 | **OUR PRICE: \$127.20**



Handi Quilter

Hey Santa,
just get her what she wants.

A longarm is on her wish list,
and it's time for Santa to deliver.



Wishing you holidays that are

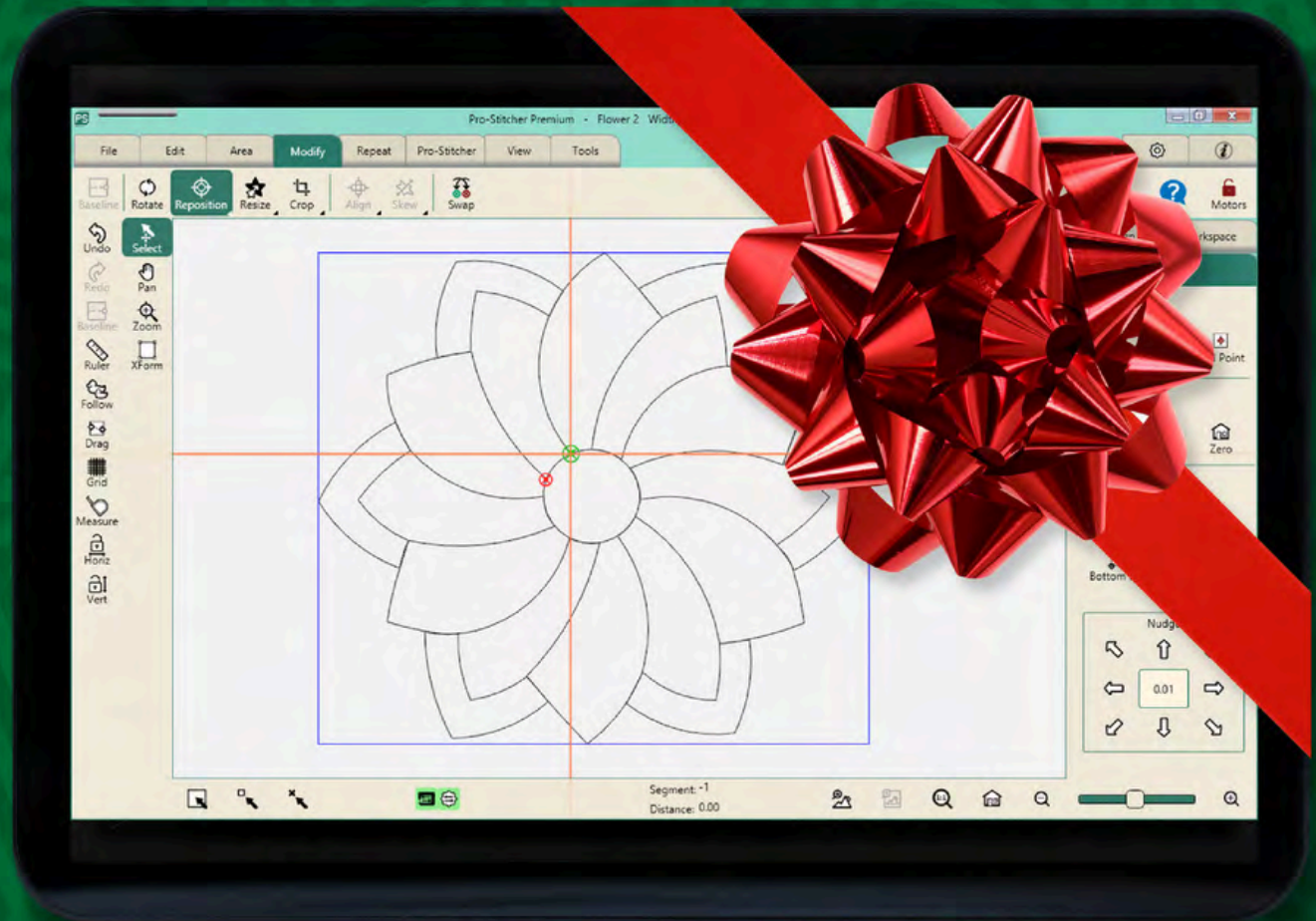
HAPPY & HANDI

quilted full of warmth for you and yours.



Pro-Stitcher

SPECIAL EDITION HOLIDAY OFFER



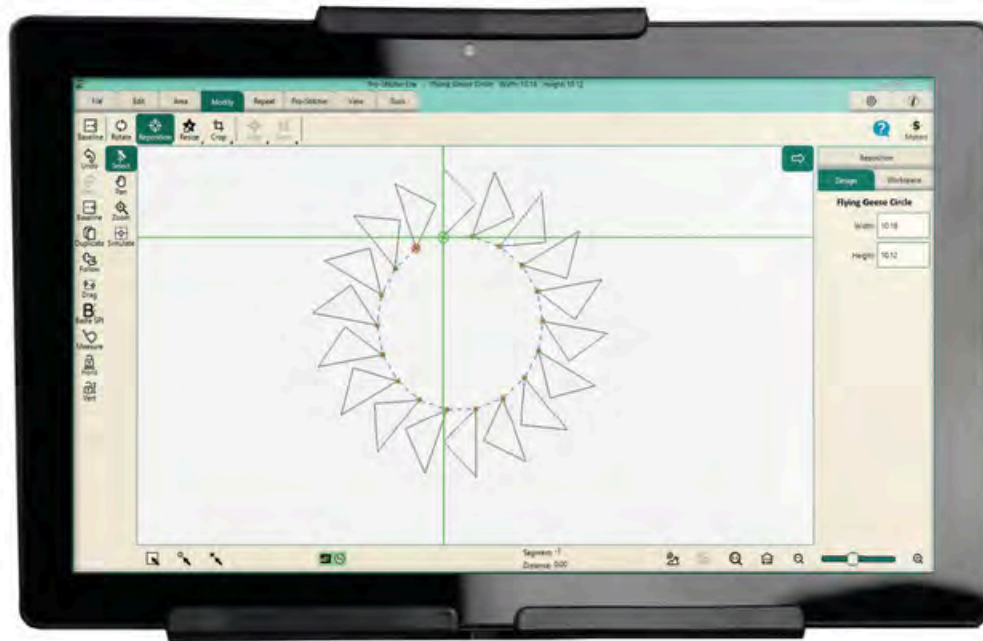
Pro-Stitcher
\$2700 off

Pro-Stitcher Lite
\$1000 off

Free Design Bundle
\$3k
VALUE
FREE
★
Included with Pro-Stitcher

Pro-Stitcher® LITE

Computerized quilting
to make your creative
ideas a reality



Pro-Stitcher Lite was designed from the ground up for the newest generation of quilting machines. Its streamlined robotics system allows hobbyists and professionals alike to finish more quilts with incredible detail and creativity. Easily operate Pro-Stitcher Lite from a touchscreen tablet computer conveniently mounted on top of the machine. Practical, straightforward, and intuitive, Pro-Stitcher Lite is the highest-quality computerized quilting system for lightweight longarm quilting machines.

PACKAGE INCLUDES:

*Touchscreen tablet with Pro-Stitcher Lite software featuring Opti-Stitch™ | Includes 250 designs
Computer-guided or free-motion quilting | Installation Kit compatible with Frame Style*



Pro-Stitcher Lite shown on one of many compatible machines.

SOFTWARE FEATURES

- Automatically calculates speed and acceleration with Opti-Stitch™
- Manual control of speed and acceleration are available
- Includes 250 designs
- Precisely Resize, Rotate, and Repeat designs to fit specific areas
- Skew or Align designs to fit areas
- Move designs into position by simply moving your finger across the screen
- Define and Fill an area with a design, using 2-corner (rectangles) or multi-point (any shape)
- 35 preset areas included
- Horizontal and vertical channel locks
- Crop inside or outside of your design to fit your quilt, with the option to close the jumps or leave them open
- Create new start/stop points
- Customize stitches per inch
- Compatible with all common file formats (including .hqv, .hqf, .qli, and more)
- On-screen Grid and Ruler to measure designs or area on quilt
- Simulator function to practice Pro-Stitcher Lite software away from the machine

Machine Features

- View and customize designs directly on a large color touchscreen tablet conveniently mounted on top of the machine
- Import your favorite patterns via a USB port
- With one touch, switch between computer-guided and free-motion quilting
- Combine both free-motion and digital motifs
- Integrated motor-control systems with fluid motion control
- Handcrafted in the U.S.A. with integrated technology that follows a seven-step quality control program
- The Flexirack carriage system is easy to install, and allows motors to disengage for free-motion quilting

Pro-Stitcher Lite also features:

- Nationwide retailer support
- Warranty: 5 years mechanical, 5 years electronic/electrical, lifetime software updates
- Designed and engineered in the U.S.A.
- Educational videos, tutorials, and tips available at ProStitcher.com
- 3D interactive assembly instructions with the BILT app

Contact your local Pro-Stitcher retailer to see which longarm machines are compatible.

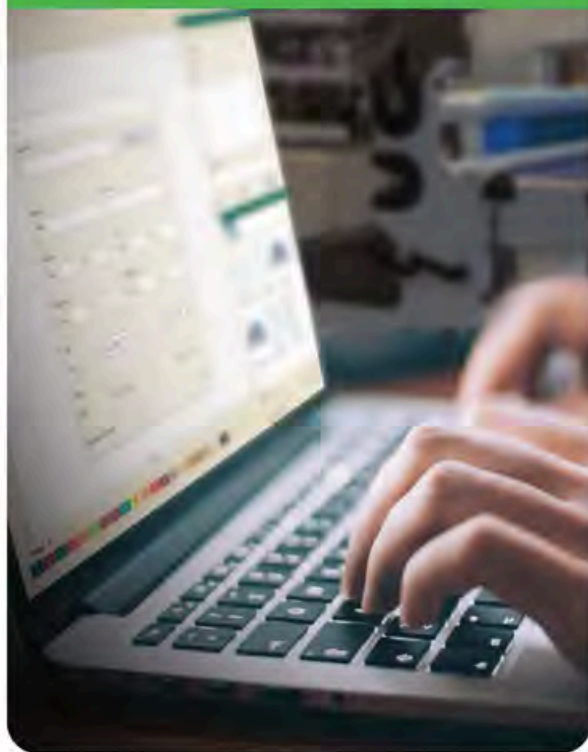
Pro-Stitcher® **LITE**



Pro-Stitcher® CATALOG

Quickly sort and find
digital quilting designs with
Pro-Stitcher Catalog.

*Organizing and finding your
quilting designs has never been
so easy. Always have the
perfect design for your next
quilt at your fingertips!*



Pro-Stitcher Catalog gives you the ability to quickly sort and find digital designs in your computer. This simple-to-use software allows you to add or edit notes, add keywords, and give ratings to saved quilting designs, enabling you to easily find the perfect design for your next quilting project.

You can even customize how you organize and find your designs with Pro-Stitcher Catalog. Creating a collection by using keywords or ratings is straightforward and uncomplicated, allowing you to effortlessly find and use exactly the design you searched for.

The user interface of Pro-Stitcher Catalog makes it simple to learn and use. Lifetime program updates are always included for free. The user manual, tutorials, and videos are all easily accessible from the software itself or by visiting ProStitcher.com.

Organizing and finding your quilting designs has never been so easy. You'll always have the perfect design for your next quilt at your fingertips!

MINIMUM SYSTEM REQUIREMENTS

Windows 8 – 8.1; 1 gigahertz (GHz) or faster processor with support for PAE, NX, and SSE2; 1 gigabyte (GB) (32-bit) or 2 GB (64-bit) RAM; 16 GB or 20 GB (64-bit) hard disk space; Microsoft DirectX9 graphics device with WDDM drive; USB port; 800 x 600 display; mouse, internet access.



Pro-Stitcher DESIGNER™

Full-featured design
software for creating
paper or digitized
quilting motifs

*Pro-Stitcher Designer gives
you the ability to quickly
design, edit, customize,
export, and import any quilting
motif you can imagine.*

MINIMUM SYSTEM REQUIREMENTS:

WINDOWS: Windows 8 – 8.1; 1 gigahertz (GHz) or faster processor with support for PAE, NX, and SSE2; 1 gigabyte (GB) (32-bit) or 2 GB (64-bit) RAM; 16 GB (32-bit) or 20 GB (64-bit) hard disk space; Microsoft DirectX 9 graphics device with WDDM drive; USB Port; 800 x 600 Display; Mouse; Internet Access.

FILE FORMATS:

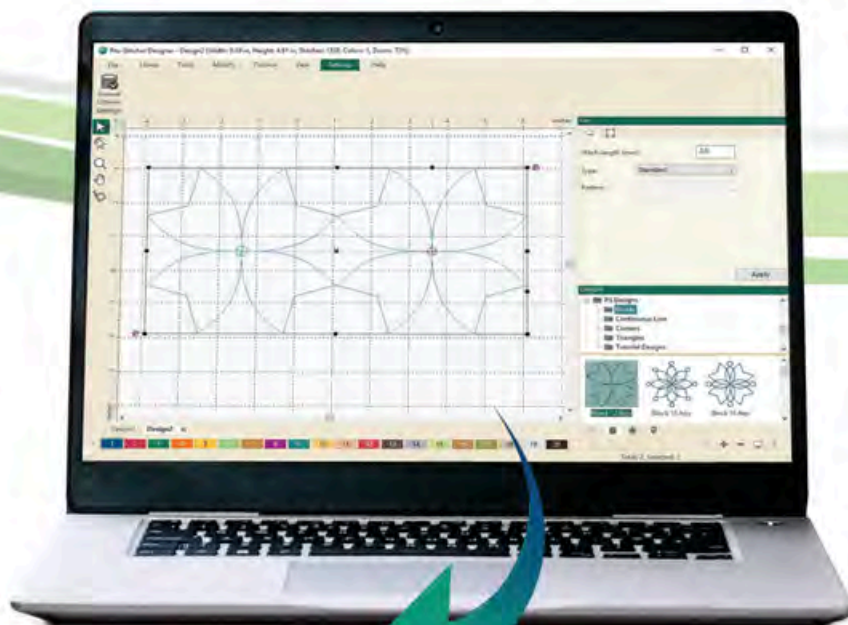
OPENS: HQF, HQV, HQA, HQW, QLI, CQP, SSD, TXT, IQP, QCC, PAT, BQM, ANS, common embroidery files.

IMPORTS:

SVG, AI, EPS, EMF, WMF, DXF, PLT, FCM, TT (true type fonts), BMP, JPG, PNG, TIF, GIF • SAVE AS AND EXPORTS: SVG, PNG, JPG, HQF, HQV, HQA, HQW, QLI, CQP, SSD, TXT, IQP, PAT, BQM, SLT

EXPORTS:

C2S, LDF, PLT, DXF, SVG, HQF, HQV, HQA, HQW, DQP, SSD, TXT, IQP, QLI, QCC, PAT, BQM, SLT

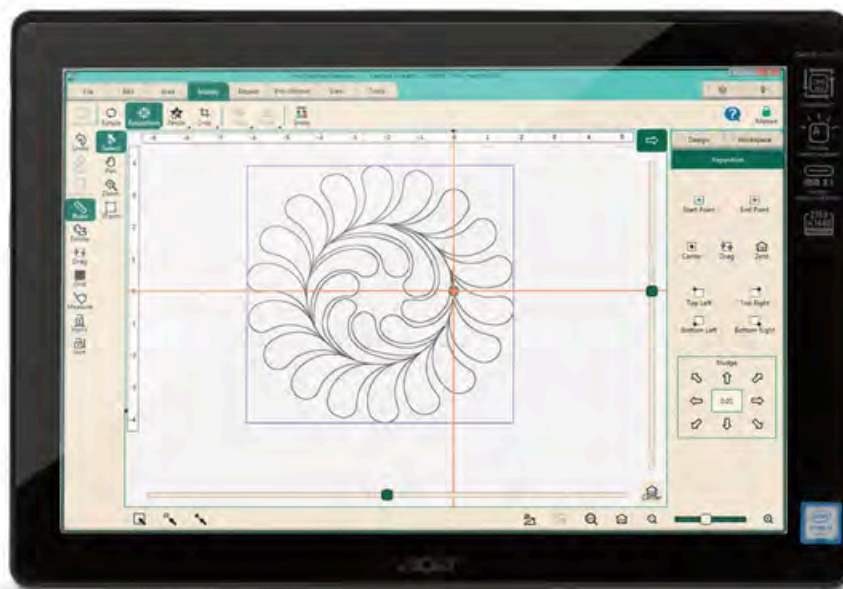


Special Features

- Full-featured, vector-based drawing software to create your own digital quilting files
- Easy-to-learn user interface and features
- Free lifetime program updates
- Full user support with manual, tutorials, and videos
- Design and stitch motif library
- Print design catalog
- Compatible with all major longarm quilting file formats
- Import and export vector formats
- Batch save in all quilting formats
- Draw original designs with Pencil, Line, Curve, 3-Point Arc, and Bezier tools
- Customize, edit, and merge existing designs
- Use design points and anchors for fine-tuned customization
- Create quilt designs from artwork using Trace tools
- Audition quilt patterns and preview with Slow Redraw
- Use Autoshapes to quickly draw original quilt patterns
- Create repeated motifs with the Carousel and Reflect features
- Convert True Type fonts to artwork
- Add seam allowances to appliqué and EPP artwork
- Customizable grids, including diagonal grid
- Automatic fills including stipple and crosshatch
- Print pantographs and tear-away stencils for use with home sewing machines and non-robotic longarm quilting machines
- Quickly preview how designs repeat while drawing
- Repeat designs to create edge-to-edge layouts

Pro-Stitcher® PREMIUM

Computerized quilting
to make your creative
ideas a reality.



Pro-Stitcher Premium was developed, written, and is supported by a team of engineers who work directly with quilters like you. The Pro-Stitcher Premium software is packed with features that enable you to resize, modify, and customize nearly any digital design available – and then quilt it with unparalleled precision. Easily operate Pro-Stitcher Premium from a lightweight touchscreen tablet computer that is conveniently mounted on top of the machine. You can be sure that you have purchased the highest quality product, which is backed by the Pro-Stitcher warranty and the largest network of local representatives. Expand your quilting possibilities with this easy-to-learn, easy-to-use, computerized system and have fun finishing more quilts!

PACKAGE INCLUDES:

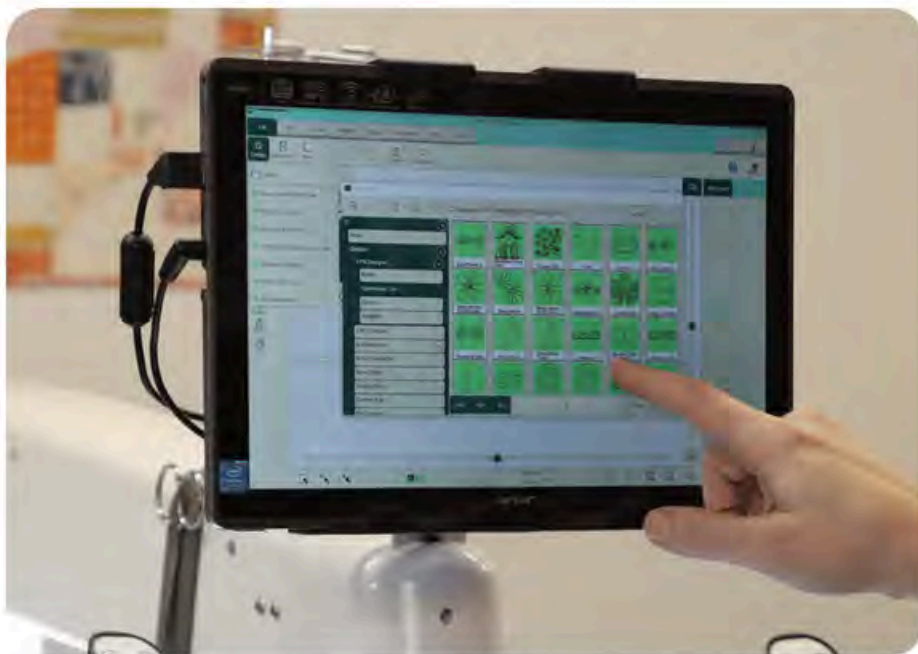
Touch-screen tablet with Pro-Stitcher Premium software featuring Opti-Stitch™

Computer-guided or free-motion quilting | Custom carriage | Recording of free-motion designs

Pro-Stitcher Designer™ design software for designing and adjusting your own patterns | More than 800 designs



Pro-Stitcher Designer™ comes pre-installed.



Pro-Stitcher Premium shown on one of many compatible machines.

Machine Features

- View and customize designs directly on a large color touch-screen tablet conveniently mounted on top of the machine
- Import your favorite patterns via a USB port
- Switch immediately between computer-guided and free-motion quilting
- Record feature records free-motion designs for future use
- Combine both free-motion and digital motifs
- Integrated motor-control systems with fluid motion control
- Handcrafted in the U.S.A. with integrated technology that follows a seven-step quality control program
- The Flexirack carriage system is easy to install, and allows motors to disengage for free-motion quilting.

Pro-Stitcher Premium also features:

- Nationwide retailer support
- Warranty: 5 years mechanical, 5 years electronic/electrical, lifetime software update
- Designed and engineered in the U.S.A.
- Educational videos, tutorials, and tips available at ProStitcher.com

SOFTWARE FEATURES

- Automatically calculates speed and acceleration with Opti-Stitch™. Manual control of speed and acceleration are available.
- Includes more than 1,000 designs
- Precisely Resize, Rotate, and Repeat designs to fit specific areas
- Skew or Align designs to fit areas
- Move designs into position by simply moving your finger across the screen
- Resize and Rotate a design using on-screen handles
- Define and Fill an area with a design, using 2-corner (rectangles) or multi-point (any shape)
- 35 preset areas included.
- Horizontal and vertical channel locks
- Crop inside or outside of your design to fit your quilt, with the option to close the jumps or leave them open
- Create new start/stop points
- Customizable stitches per inch and Tie-Off function
- Reads most .hqv, .hqf, .hqa, .txt, and .qli digital quilt patterns
- Mark and record multiple points for accurate stitch-in-the-ditch quilting
- On-screen Grid and Ruler to measure designs or area on quilt
- Simulator function to practice Pro-Stitcher software away from the machine
- Quilting Space option to represent the quilting space available
- Stitch stats available to find out number of stitches and amount of stitching time.

Contact your local Pro-Stitcher retailer to see which longarm machines are compatible.



Pro-Stitcher® PREMIUM

©2023 Pro-Stitcher • Find tutorials and updates at www.ProStitcher.com
Part # QM99999-7 • October 2023

Pro-Stitcher[®]

COMPARISON GUIDE

Pro-Stitcher Premium and Pro-Stitcher Lite computerized quilting systems offer quilters the ability to do what they love, faster. While the two systems are similar in their function, there are several differences between the two. This guide outlines features and HQ compatibility.

	PRO-STITCHER LITE	PRO-STITCHER PREMIUM
System Features		
Color touchscreen tablet (Included as part of robotics system)	✓ (11 inches) 	✓ (12 inches) 
Computer-guided and Free-motion Quilting	✓	✓
Tablet Integration		✓
Cable Integration	✓	✓
Digital Designs Included	250	800+
Pro-Stitcher Designer Design Software	✓ Available	✓ Included
Software Features		
Simulation Mode	✓	✓
Free-Motion Record + Save		✓
Create, Position, and Quilt Designs	✓ Condensed settings	✓
Channel Locks (horizontal + vertical)	✓	✓
Tie-off Settings	✓ Set increments	✓
Wrap Designs	✓ Set increments	✓
Warranty (mechanical/electrical)	5yr/5yr	5yr/5yr

See reverse for additional features or visit ProStitcher.com for more information.

SOFTWARE FEATURES

PRO-STITCHER LITE

PRO-STITCHER
PREMIUM

GENERAL	Workspace, Save + Open		✓
	Load multiple designs	✓	✓
	Needle Drag + Drop	✓	✓
	Follow		✓
	Zoom	✓	✓
	Pan	✓	✓
	Select	✓	✓
	Undo/Redo	✓	✓
MODIFY	Skew 1, Skew 2 (border), Skew 3 (triangle)	✓ Limited options	✓
	Mirror + Flip patterns	✓	✓
	Rotate patterns	✓	✓
	2-point rotation		✓
	Custom rotation	✓	✓
	Align	✓	✓
	Reposition + Nudge	✓	✓
	Reposition: Start Point	✓	✓
	Reposition: Current + End Point	✓	✓
	Reposition: Center	✓	✓
	Reposition: Drag + Drop	✓	✓
	Reposition: Zero		✓
	Reposition: top/bottom, left/right	✓	✓
	Resize	✓	✓
	Crop - inside / outside	✓	✓
	Crop - edges	✓	✓
	Crop - start / end	✓	✓
	Swap start + end points		✓
	Baseline	✓	✓
	Transform, xform		✓
REPEAT	Basic Repeat	✓	✓
	P2P basic	✓	✓
	Fill	✓	✓
	Stretch	✓	✓
	Horizontal + Vertical Gap	✓	✓
	Wrap, Window	✓ Set increments	✓
	Wrap, Row	✓ Set increments	✓
	Wrap, Gap	✓ Set increments	✓
	Wrap: edges, drag		✓
	Wrap: no wrap	✓	✓
VIEW	Rubber band		✓
	Design	✓	✓
	Area	✓	✓
	Rulers / Grid	✓	✓
	Design Points		✓
	Start + End	✓	✓
	Jumps	✓	✓
	Bounds		✓
	Scroll	✓	✓
	Transparency		✓

SOFTWARE FEATURES		PRO-STITCHER LITE	PRO-STITCHER PREMIUM
PRO-STITCHER	Free-Motion Record + Save		✓
	Mark + Clear	✓	✓
	Half Stitch	✓	✓
	Full Stitch	✓	✓
	Follow		✓
	Measure	✓	✓
	Baste		✓
	Channel Locks Horizontal/Vertical	✓	✓
	Move	✓	✓
	New Start + End	✓	✓
	Auto Stat + End	✓	✓
	Push button release of gears	✓	✓
AREA	2-pt area	✓	✓
	Multi-point area	✓	✓
	Manual numeric area dimension adjustment	✓	✓
	Quilting/hoop space	✓	✓
	Rubber band to area		✓
QUILT	Stitch	✓	✓
	Tie offs, start + end	✓	✓
	Pullup options	✓ Set increments	✓
	Trace Bounds		✓
	Trace Area	✓	✓
SETTINGS	Nudge defaults	✓	✓
	Auto Jump defaults	✓ Set increments	✓
	Opti-Stitch	✓	✓
	Stitches-per-inch setting	✓	✓
	Baste setting		✓
	Tie-off number setting	✓ Set increments	✓
	Tie-off distance setting	✓ Set increments	✓
	Tie-off start + end setting	✓ Set increments	✓
	Tie-off tack		✓
	Tie-off micro	✓ Set increments	✓
	Pullup preferences	✓ Set increments	✓
	Pause Delay preferences (time + distance)		✓
	Stitch Stats		✓
ADVANCED	Simulation Mode	✓	✓
	General, thread break sensor		✓
	General, verify before quilt	✓	✓
	General, Keep Motors Locked		✓
	General, Load start point at crosshairs		✓
	General, Load Point to Point		✓
	Communications, PS	✓	✓
	Communications, Reconnect Motors	✓	✓
	Communications, Reconnect Machine	✓	✓
	Speed Profile, Max SPM	✓	✓
	Logging preferences	✓	✓
	Motors, Motor Torque Limit	✓	✓



OUR HANDI QUILTER CLOSEOUT MODELS

OVER
**50%
OFF**

ONLY AT OUR CLARKSVILLE STORE

Handi Quilter Amara 20 12ft Frame Studio w/ Pro Stitch

FLOOR MODEL • NO BOX

On older studio frame

Was: \$25,490.00

OUR PRICE: \$21,559.00



MORE IN-STOCK! CALL YOUR LOCAL STORE FOR DETAILS:

Handi Quilter Moxie XL with Little Foot Frame

NEW HEAD • LIKE NEW FRAME

FLOOR MODEL FRAME

Was: \$8,995.00

OUR PRICE: \$6,995.00



LAST CHANCE

CLOSEOUT VACUUMS



ONLY AT OUR CLARKSVILLE STORE

MIELE C3 HOME CARE

FLOOR MODEL • NO BOX

WAS: \$1,359.99 | **OUR PRICE: \$1,199.99**

MIELE C1 CAT AND DOG

FLOOR MODEL • NO BOX

WAS: \$929.99 | **OUR PRICE: \$799.99**

MIELE VACUUM S8 UNIQ

CERTIFIED PRE-OWNED - NO BOX

WAS: \$1,799.99 | **OUR PRICE: \$1,599.99**

SEBO AIRBELT D4

OPEN BOX • ORIGINAL BOX (RETURN)

WAS: \$1,499.99 | **OUR PRICE: \$1,149.99**

DYSON OUTSIZE V11

FLOOR MODEL • NO BOX

WAS: \$699.99 | **OUR PRICE: \$499.99**

ONLY AT OUR GREENWOOD STORE

SIMPLICITY S65P

WAS: \$599.99 | **OUR PRICE: \$399.00**

SIMPLICITY S65D

WAS: \$399.99 | **OUR PRICE: \$299.00**

SIMPLICITY S65S

WAS: \$329.99 | **OUR PRICE: \$249.00**

HIZERO F803

FLOOR MODEL & IN BOX UNITS AVAIL.

WAS: \$699-\$750 | **OUR PRICE: \$299.99**

SIMPLICITY SPIFFY S60

FLOOR MODEL & IN BOX UNITS

WAS: \$179.99 | **OUR PRICE: \$79.99**

OVER
**50%
OFF**



LAST CHANCE

CLOSEOUT VACUUMS



ONLY AT OUR LOUISVILLE STORE

MIELE BRILLIANT

FLOOR MODEL - ONLY ONE LEFT!

WAS: \$1,789 | **OUR PRICE: \$1,249**

MIELE CLASSIC C1 HOMECARE

FLOOR MODEL - TWO IN STOCK!

WAS: \$1,099 | **OUR PRICE: \$749**

FINANCING
AVAILABLE!

WARRANTY
INCLUDED!



MORE LAST CHANCE DEALS! CALL FOR DETAILS ASAP

MIELE TRIFLEX HX1 FACELIFT

(GRAPHITE GREY / BLUE ACCENT)

NEW IN ORIGINAL BOX

WAS: \$899.00 | **OUR PRICE: \$579.99**

MIELE TRIFLEX HX2 SPRINTER

NEW IN ORIGINAL BOX

WAS: \$1,049.00 | **OUR PRICE: \$799.99**

MIELE CM5 COFFEE MAKER

NEW IN ORIGINAL BOX

WAS: \$1,499.99 | **OUR PRICE: \$999.99**

ORECK ELEVATE VACUUM

NEW IN ORIGINAL BOX

WAS: \$499.00 | **OUR PRICE: \$299.99**



LAURASTAR⁺

ALL-IN-ONE SWISS IRONING SYSTEMS



LAURASTAR LIFT ORIGINAL STEAM IRON

REGULAR PRICE: \$999

OUR SALE PRICE: \$699



LAURASTAR SMART U

REGULAR PRICE: \$3,699.99

SALE (NEW): \$3,099

SALE (OPEN BOX): \$2,799



LAURASTAR SMART 1

REGULAR PRICE: \$2,899

SALE (OPEN BOX): \$1,799

WHY BUY AT SEWING & VACUUM AUTHORITY AND QUILT QUARTERS?

Shopping local is ALWAYS rewarding!

We're a passionate team of sewists, quilters, and crafty people who have served our community in Kentucky and Indiana for over 40 years. Whether you join us for a class or purchase a machine from us, you'll experience the difference of our expert service.

We offer the lowest prices on the market, guaranteed. It's our low price promise! Plus, your purchase includes free lessons, warranties, financing options, and onsite repair services.



FIND YOUR LOCATION

LOUISVILLE - WESTPORT RD

(Springhurst - Across from Chick-Fil-A)

10494 Westport Road

Louisville, KY 40241

(502) 412-6040

We are open

Monday - Friday 9:30 am - 5:30 pm

& Saturday at 9:30 am - 4:30 pm

INDIANA - CLARKSVILLE

(2 Blocks West of Super Store)

914 Eastern Boulevard

Clarksville, IN 47129

(812) 283-8424

Monday - Friday 9:30 am - 5:30 pm

& Saturday at 9:30 am - 4:30 pm

INDIANA - GREENWOOD

(Next to Starbucks & McCallisters Deli)

1035 North SR 135

Greenwood, IN 46142

(317) 882-6672

Monday - Friday 9:30 am - 5:30 pm

& Saturday at 9:30 am - 4:30 pm

INDIANA - INDIANAPOLIS

Quilt Quarters

9504 Haver Way, Indianapolis, IN

(317) 757-8340

Monday - Friday 9-5 pm

& Saturday at 9-4 pm

