

**SEWING & VACUUM  
AUTHORITY**

*A Family Company*



B 570  
QUILTERS EDITION

# Spring Catalog

..... **INSIDE:** STORE CLASSES | SPECIAL EVENTS | COUPONS | & MORE

**AQS  
CLASSROOM  
SPECIAL!**

DETAILS ON  
PAGE 2

**GET THE BERNINA 570 QE  
AT OUR BEST PRICE, EVER!**

Call or visit your local store to get  
**DEALER EXCLUSIVE** special pricing on  
select long arms and quilting machines!  
*Learn more on the next page.*

**BERNINA**  
*made to create*



**Family-Owned Since 1983**

[www.sewvacauthority.com](http://www.sewvacauthority.com)

*It's Not Too Late!*

DON'T MISS OUT ON OUR **LOWEST-EVER**  
**AQS QUILT SHOW PRICING, IN-STORE ONLY!**

 **QuiltWEEK®**

CLASSROOM  
MODEL SPECIAL:  
**BERNINA  
570 QE**

**CLAIM OUR LOWEST  
PRICES EVER! CALL  
YOUR LOCAL STORE!**

*See Our Specials On...*

**BERNINA**  
made to create

**brother**  
at your side

**JANOME**



TABLE OF

# Contents



2  
4  
5  
8  
8  
14  
16  
19  
36  
44  
47  
48  
50  
51

**AQS PADUCAH INFO**  
**IN-STORE COUPONS**  
**CLASS CALENDARS**

**SPECIALS & EVENTS**

**BUNDLE OFFERS**

**BROTHER DEALS**

**BERNINA DEALS**

**JANOME DEALS**

**VIKING DEALS**

**HANDI QUILTER DEALS**

**VACUUMS**

**QUILT QUARTERS' NOTIONS**

**OUR LOCATIONS**

## WHY BUY FROM US?

**LOW PRICE PROMISE**

**TRUE WARRANTY**

**90-DAY PRICE MATCH**

**FREE LESSONS**

**LOCAL & FAMILY OWNED**



# Sale COUPONS

BRING THESE  
TO YOUR  
LOCAL STORE  
TO REDEEM



SEWING & VACUUM  
AUTHORITY  
*A Family Company*



## RENEW, REFRESH, REPAIR

Take  
**\$10 OFF**  
Any Repair  
Over \$24.99!



DON'T WAIT! REPAIR IS ADVISED ONCE PER YEAR.  
KEEP YOUR MACHINE IN TIP-TOP SHAPE!

## EXCLUSIVE DEALER SPECIAL!



**20% OFF**  
ALL CABINETS!

## MULTI-NEEDLE SHOWCASE

- 6 NEEDLE/ 10 NEEDLE!
- NEW AND USED!
- FREE LESSONS!
- 10 YEAR WARRANTY!
- LOW PRICE PROMISE!
- TRADE-INS WELCOME!

EMBROIDERY  
SUPER DEALS!



brother

## CLOSEOUT FABRIC DEALS



DESIGNER BRANDS STARTING AT

**\$4.99 / Yard!**



## OUR TOP CORDLESS PICK!

**SIMPLICITY  
S65P**

Was \$599.99,  
**Now \$499.99!**



## WORLD'S BEST PET VAC!

**RICCAR R30  
BRILLIANCE**

COME SEE IT FOR YOURSELF!



SUPER  
DEAL!

## EVERYDAY SWISS METTLER 60 WEIGHT SILK THREAD

WAS \$4.99  
PER SPOOL

**BUY 10, GET 2 FREE!**



LOWEST PRICES GUARANTEED · FREE ASSEMBLY · 10 YR WARRANTY · FINANCING AVAILABLE

Terms and conditions apply. Cannot be combined with other offers. See store for details and availability.





| Sun  | Mon                                     | Tue   | Wed  | Thu  | Fri  | Sat   |
|--|---|---|--|--|--|---|
| 27   | 28                                      | 29  | 30   | 1  | 2  | 3   |
|  | Embroidery Club 101                     |   | New Owners Embroidery Class<br>Embroidery- Beyond the Basics | First Annual All Indiana Shop Hop! Discover 50+ Local Quilt Shops in Two Months!<br>SVA's Weekly Facebook LIVE!<br>Beginning Sewing Project Class - Sewing Mat |  | DERBY DAY Westport Store closed<br>LONG ARM GROUP MEETING   |
| 4  | 5                                       | 6   | 7  | 8  | 9  | 10  |
| First Annual All Indiana Shop Hop! Discover 50+ Local Quilt Shops in Two Months! |   |   |  |  |  |   |
|  | Bernina 5-7-8 Series Embroidery Mastery | Viking Club                                 | New Owners Sewing Class<br>Sewing - Beyond the Basics        | SVA's Weekly Facebook LIVE!<br>NEW!! OESD My Happy Place BOM- Clarksville  |  | Quilts of Valor Meeting   |
| 11   | 12                                      | 13  | 14   | 15   | 16   | 17  |
| First Annual All Indiana Shop Hop! Discover 50+ Local Quilt Shops in Two Months! |   |   |  |  |  |   |
|  | Embroidery Club 101                     |   | New Owners Embroidery Class<br>Embroidery- Beyond the Basics | SVA's Weekly Facebook LIVE!<br>NEW!! OESD My Happy Place Block of the Month- Westport  | Beginning Sewing: Bowl Cozies  | New Owners Sewing Class<br>Clarksville Block of the Month Club 2025<br>Sewing - Beyond the Basics |
| 18   | 19                                      | 20  | 21   | 22   | 23   | 24  |
| First Annual All Indiana Shop Hop! Discover 50+ Local Quilt Shops in Two Months! |   |   |  |  |  |   |
|  | Embroidery Club 101                     | ★ Kona Cotton 2025 Block of the Month Quilt | By Annie Pencil Case for Lola                                | SVA's Weekly Facebook LIVE!<br>One Block Wonder Panel Quilt  | Beginning Sewing: Bowl Cozies  | Applique Seasonal Skinnies  |
| 25   | 26                                      | 27  | 28   | 29   | 30   | 31  |
| First Annual All Indiana Shop Hop! Discover 50+ Local Quilt Shops in Two Months! |   |   |  |  |  |   |
|  | Memorial Day Closed                     |   |  | SVA's Weekly Facebook LIVE!<br>New Owners Embroidery Class<br>Embroidery- Beyond the Basics  | Sit and Sew with Barbara<br>Snippy Jim at Sewing & Vacuum Authority - Westport Rd (Louisville) | Computer Techniques for Your Embroidery Machine   |



SVA CLARKSVILLE  
914 EASTERN BLVD

SVA LOUISVILLE  
10494 WESTPORT RD

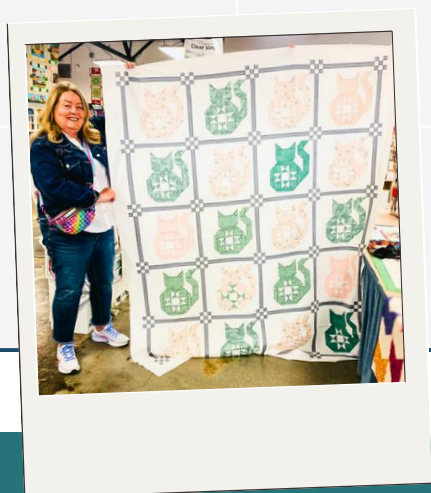
SVA GREENWOOD  
1035 NORTH SR 135

ONLINE EVENT

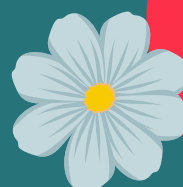
SPECIAL EVENT



| Tue  | Wed  | Thu   | Fri                                 | Sat                                     |
|--|--|---|-------------------------------------|---|
| 29   | 30   | 1<br>Sewing Studio   Join Our 5 Hour Open Sew!  | 2                                   | 3                                       |
| 6  | 7  | 8<br>Sewing Studio   Join Our 5 Hour Open Sew!  | 9                                   | 10                                      |
| 13<br>[FULL] Cadence Court Block of the Month Club!<br>🌟 March 2025-26<br>Happy Hues Block of the Month Club | 14<br>★ "Sew Hometown" Block of the Month 🌟🌟 | 15<br>Sewing Studio   Join Our 5 Hour Open Sew! | 16<br>Bernina Mastery Guide: Sewing | 17<br>Bernina Mastery Guide: Embroidery |
| 20   | 21   | 22<br>Sewing Studio   Join Our 5 Hour Open Sew! | 23                                  | 24                                      |
|  | 28   | 29<br>Sewing Studio   Join Our 5 Hour Open Sew! | 30                                  | 31<br>BERNINA Software Building Blocks  |



LEARN SEWING, QUILTING,  
AND EMBROIDERY WITH US!



Click here  
to view our  
full calendar  
& sign up  
online!



HAVE YOU SEEN OUR

# CERTIFIED PRE-OWNED MACHINES?

**IN-STOCK  
AT SEWING  
& VACUUM  
AUTHORITY!**



**EXPLORE  
THE NEW  
CATALOG  
TODAY!**

These machines are thoroughly inspected, repaired, and tested to ensure they meet high standards of functionality and reliability. A certified pre-owned sewing machine is an excellent choice for anyone seeking value, sustainability, and reliable performance. Every certified pre-owned machine we sell includes a 1-year mechanical warranty\* and 30-day unlimited ask warranty. *\*See store for details.*

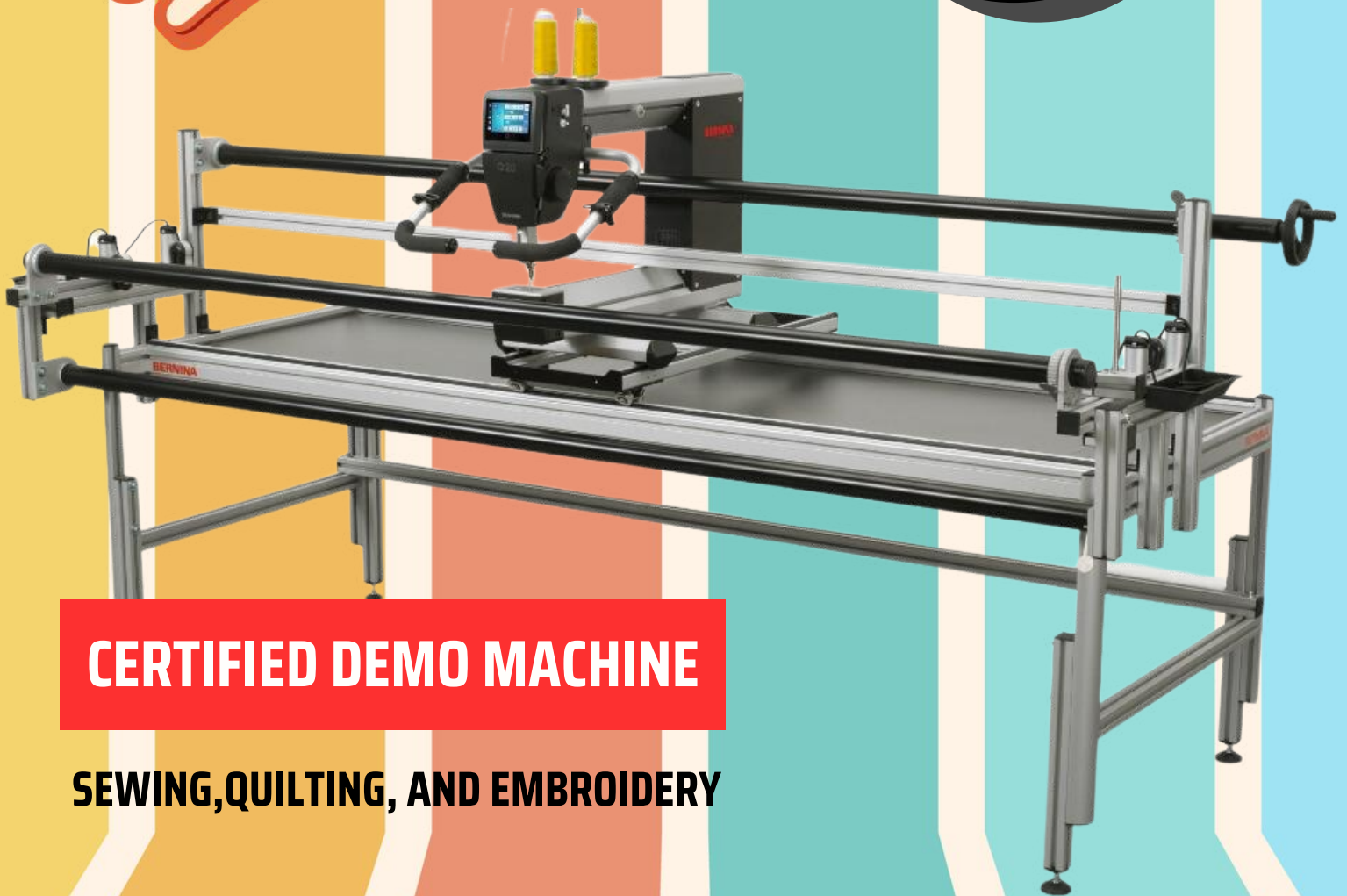


**OVER 60% OFF  
REGULAR PRICES!**

**SHOP ONLINE**

**DEAL  
OF THE  
WEEK**

**BERNINA**  
**CLASSROOM DEMO Q20**  
**ON LARGE PRO FRAME**



**CERTIFIED DEMO MACHINE**

**SEWING, QUILTING, AND EMBROIDERY**

**GET THE LOWEST PRICE, EVER.**

**ONE AVAILABLE - ONLY AT OUR CLARKSVILLE STORE!**

**CALL SARAH AT (812) 283-8424.**



# Sew Much Fabric!



COME EXPLORE THOUSANDS OF BOLTS OF FABRIC IN-STORE!



📍 LOUISVILLE 📍 CLARKSVILLE 📍 INDIANAPOLIS

# WHAT DOES OUR “LOW PRICE PROMISE” LOOK LIKE?

“My local dealer wanted \$750-800, and were going to ship it to Chicago for repair. It would take 6-8 weeks. I took my BERNINA 880 here because it would no longer self-thread. **They fixed it in less than 2 weeks for only \$125.** I also found out that they are MUCH cheaper for supplies, material, thread, etc. than my local dealer. This is the place for all sewing machine repair, as well as a great place to shop. While talking to them, we inquired about some local restaurants. They steered us right. Food was great. It was well-worth the 2 hour drive. **They also have a GREAT assortment of new and used vacuums for sale.**”

**-REVIEW BY BILL W.**

GOOGLE REVIEWS LOCAL GUIDE



**That's the Sewing &  
Vacuum Authority  
difference!**

**SEWING & VACUUM  
AUTHORITY**  
*A Family Company*





**ALL INDIANA  
SHOP HOP IS  
HAPPENING  
RIGHT NOW!  
COME JOIN  
THE FUN!**

**GRAB YOUR MAGAZINE  
IN-STORE! INCLUDES  
PASSPORTS, STORE  
GUIDES, MAPS, &  
IMPORTANT INFO!**



## **MEET HOPPY! HE'S OUR "HOPPER ON THE SHELF!"**

If you find him in-store during the hop, take a selfie with him. 📸 Next, post your picture in the All Indiana Shop Hop Facebook group. Then, take him to our store register to enter to win a special prize!!



**ALL INDIANA  
SHOP HOP**

MAY 1 – JUNE 30, 2025





# #A BIG DAY





# Sew Much Fabric.



A NEW fabric collection in stock! Check out the eye-catching "Zebra Dazzle" from 3 Wishes Fabric!

## COME EXPLORE THOUSANDS OF BOLTS!



## WE HAVE THE REGION'S LARGEST SELECTION!



# EMBROIDERY BUNDLES!

## WONDERFUL SPRING BUNDLE



**ONLY  
\$291.66/MO**

### INCLUDES...

- Brother PR1055X 10 Needle Embroidery Machine
- Brother PRNSTD2 Stand
- 7 Piece Frame EZ Frame Set
- Wide Cap Frame & Driver Set
- PR Playbook
- Delivery, Set up, & 2 Training Classes

**...A \$6,500 VALUE!!**

## BROTHER SPRING POWER BUNDLE!



**ONLY  
\$225/mo!**

- INCLUDES BROTHER PR680W 6 NEEDLE
- PRSTD2 PR STAND (\$1399 VALUE)
- UNIVERSAL CAP FRAME (\$1299 VALUE)
- IN HOME DELIVERY & SET UP (\$400 VALUE)
- PR 6 SERIES PLAYBOOK
- 2 TRAINING CLASSES (\$1000 VALUE)

**....\$6,096 VALUE!**

**SEE MORE ON  
THE NEXT PAGE!!**



....AND MORE  
FOR YOU!!

**BROTHER  
BLOWOUT  
DEAL!**

**PRICE TOO  
LOW TO  
PRINT!**



**BROTHER  
PR1X1  
NEEDLE**

Take your  
embroidery  
skills to the  
next level!

**SEE STORE FOR DETAILS!**



## **FIND YOUR STORE**

- 📍 **LOUISVILLE, KY | 10494 WESTPORT RD | (502) 412-6040**
- 📍 **CLARKSVILLE, IN | 914 EASTERN BOULEVARD | (812) 283-8424**
- 📍 **GREENWOOD, IN | 1035 NORTH SR 135 | (317) 882-6672**
- 📍 **INDIANAPOLIS, IN | 9504 HAVER WAY | (317) 757-8340**

EXPERIENCE  
TRUE LUXURY

AVENEER

EV1



Trade in your old  
machine for Brother's  
revolutionary new model!

Only at your local Brother Dealer.  
Lowest prices, guaranteed.



# AVENEER EV1

## SEWING · EMBROIDERY · QUILTING



### Industry First Features and Unrivalled Innovations

#### ✓ Largest Embroidery and Projector Area

A large 14.1" workspace handles everything including large home decor projects. The industry leading 11 5/8" x 18 1/4" embroidery frame is the **largest and most advanced** ever offered by Brother. Project stitches or designs onto an 8"x5" projection area, allowing for precise placement and editing.<sup>1</sup>

#### Picture Play Embroidery Function

Using AI technology, the Picture Play Embroidery Function converts photos or images into thread art and displays it directly on-screen, giving the users the ability to effectively paint with thread for the ultimate work of art.

#### ISR Intelligent Stitch Regulator

Keeping all stitch lengths even, this feature adjusts the needle timing to match the actual speed of the fabric being fed into the machine. Includes three modes (Continuous, Intermittent, and Basting) and three free motion feet.

#### A Library of Built-in Designs

Browsing a vast collection of over 877 sewing stitches, 1,858 embroidery designs, 31 fonts, and over 217 Disney character patterns from the large 10.1" capacitive LCD touch screen is easy and comfortable.

#### ✓ Buttonhole Preview

A first in the industry this innovative feature lets users preview the style, vertical or horizontal placement, and spacing of buttonholes through the powerful StitchVision projector.<sup>1</sup>

#### ✓ StitchVision Technology

Preview your stitches before you sew! Project a marker line, square, circle, or grid directly onto the fabric in one of 16 colors. This feature brings the reassurance of precision to every project.<sup>1</sup>

#### Edge-to-Edge Quilt Feature

With easy-to-follow instructions and 15 patterns to choose from, this dynamic feature lets users finish their quilt directly on the Aveneer EV1. Even with our 7" x 12" or 10" x 10" magnetic hoops. A great substitute for a long arm!

#### Voice Guidance Feature

Gently guides users audibly through next steps of a project with a choice of voices in 6 languages.

#### Mobile Apps

App compatibility extends the creative possibilities of the EV1. With the Artspira Mobile App<sup>2</sup>, access 10 bonus designs for the large hoop or use the drawing tool to create personalized quilt labels. The My Design Snap App<sup>2</sup> provides the opportunity to digitize any photo in one of 10 filters, all wirelessly between a mobile device and the EV1.



**brother**  
at your side



# AVENEER EV1-LE

## SEWING · EMBROIDERY · QUILTING



### Exclusive Limited Edition

Only 1,000 Aveneer numbered Limited Edition (EV1-LE) models will be produced. Flaunting a dark gray metallic exterior adorned by a lacy Mickey Mouse geometric pattern, it includes 20 additional Disney designs exclusive to EV1-LE. Also includes access to 10 additional bonus embroidery design downloads from Artspira.<sup>^</sup>

#### ✓ Largest Embroidery and Projector Area

A large 14.1" workspace handles everything including large home decor projects. The industry leading 11 5/8" x 18 1/4" embroidery frame is the **largest and most advanced** ever offered by Brother. Project stitches or designs onto an 8"x5" projection area, allowing for precise placement and editing.<sup>1</sup>

#### Picture Play Embroidery Function

Using AI technology, the Picture Play Embroidery Function converts photos or images into thread art and displays it directly on-screen, giving the users the ability to effectively paint with thread for the ultimate work of art.

#### ISR Intelligent Stitch Regulator

Keeping all stitch lengths even, this feature adjusts the needle timing to match the actual speed of the fabric being fed into the machine. Includes three modes (Continuous, Intermittent, and Basting) and three free motion feet.

#### A Library of Built-in Designs

Browsing a vast collection of over 877 sewing stitches, 1,878 embroidery designs, 31 fonts, and over 237 Disney character patterns from the large 10.1" capacitive LCD touch screen is easy and comfortable.

#### ✓ Buttonhole Preview

A first in the industry this innovative feature lets users preview the style, vertical or horizontal placement, and spacing of buttonholes through the powerful StitchVision projector.<sup>1</sup>

#### ✓ StitchVision Technology

Preview your stitches before you sew! Project a marker line, square, circle, or grid directly onto the fabric in one of 16 colors. This feature brings the reassurance of precision to every project.<sup>1</sup>

#### Edge-to-Edge Quilt Feature

With easy-to-follow instructions and 15 patterns to choose from, this dynamic feature lets users finish their quilt directly on the Aveneer EV1-LE. Even with our 7" x 12" or 10" x 10" magnetic hoops. A great substitute for a long arm!

#### Voice Guidance Feature

Gently guides users audibly through next steps of a project with a choice of voices in 6 languages.

#### Mobile Apps

App compatibility extends the creative possibilities of the EV1-LE. With the Artspira Mobile App<sup>2</sup>, access 20 bonus designs for the large hoop or use the drawing tool to create personalized quilt labels. The My Design Snap App<sup>2</sup> provides the opportunity to digitize any photo in one of 10 filters, all wirelessly between a mobile device and the EV1-LE.



**brother**  
at your side



# Accessory of the Month

## May

Zigzag Foot with Non-Stick Sole  
#52/#52C/#52D

# 25% OFF\*

Thanks to their non-stick coating, these feet glide effortlessly over “sticky” materials such as leather, plastic or vinyl.



made to create **BERNINA**

\*Offer valid May 1-31, 2025 at any participating authorized BERNINA in the United States of America. Offer good for 25% off MSRP on Zigzag Foot with Non-stick Sole #52 #52C, and #52D. Discount is off MSRP. Offer not valid on previous purchases or with any other offers or coupons. Some exclusions may apply. Subject to availability. Available while supplies last. Taxes not included in total purchase calculation. Customer is responsible for all applicable sales tax. Offer is not transferable, not redeemable for cash, and has no cash value. Offer and its terms are subject to change. Offer void where prohibited by law.

MAY 1-31, 2025

# spring INTO SPECIAL BUYS

Save big on two of our  
best sellers! The B 570 QE  
or a B 770 QE PLUS

BONUS  
BUY!

Add the embroidery module  
for only **\$1,000\***

5 Series SDT  
Embroidery  
Module



7 Series SDT  
Embroidery Module



BONUS  
BUY!



B 570 QE  
**\$3,499**  
\$4,999 MSRP

B 770 QE PLUS  
**\$5,999**  
\$7,999 MSRP



**BERNINA**  
made to create

\*Offer valid May 1-31, 2025 at any participating BERNINA Store in the United States of America. Offer applies only to the purchase of a new BERNINA 570 QE or 770 QE PLUS sewing/quilting machine. Offer may not be combined or replaced with any other BERNINA promotional offers, rebates, coupons or discounts. Not valid on previous purchases. Taxes not included in the total purchase calculation. Available while supplies last. Offer and its terms are subject to change. Offer available at participating BERNINA Dealers only. Void where prohibited by law.



MAY 1-31, 2025

# spring INTO FREE GIFTS



Purchase the B 790 PRO & receive this gift package!\*

- ✓ X-Large Machine Suitcase
- ✓ X-Large Module Suitcase
- ✓ BERNINA Embroidery Bundle
- ✓ V9 Creator Software
- ✓ BERNINA Skill Hub Class
- ✓ Maxi Embroidery Hoop

GIFTS  
VALUED  
OVER  
\$3,600

**BERNINA**  
made to create

\*Offer valid May 1-31, 2025 at any participating BERNINA Store in the United States of America. Offer applies to the purchase of a new BERNINA 790 PRO sewing/embroidery/quilting machine. Gift with Purchase includes: One (1) BERNINA XL Machine Suitcase, MSRP \$539; One (1) BERNINA XL Module Suitcase, MSRP \$359; One (1) BERNINA Embroidery Box, MSRP \$749; One (1) BERNINA Maxi Embroidery Hoop, MSRP \$529.99; One (1) V9 Creator Embroidery Software, MSRP \$1,299; and a Coupon Code for BERNINA Skill Hub Class, MSRP \$300. Total package value; \$3,776. Available while supplies last. Offer may not be combined or replaced with any other BERNINA promotional offers, rebates, coupons or discounts. Not valid on previous purchases. Taxes are not included in the total purchase calculation. Offer and its terms are subject to change. Offer available at participating BERNINA Dealers only. BERNINA of America, LLC reserves the right to extend, modify, eliminate, or reduce this offer without prior notice. 50 US/DC, 18+. Void where prohibited by law.



MAY 1-31, 2025

# spring INTO FREE GIFTS



GIFTS  
VALUED  
OVER  
\$3,600

Purchase the B 590 &  
receive this gift package!\*

- ✓ Large Machine Suitcase
- ✓ Large Module Suitcase
- ✓ BERNINA Embroidery Bundle
- ✓ V9 Creator Software
- ✓ BERNINA Skill Hub Class
- ✓ Midi Embroidery Hoop



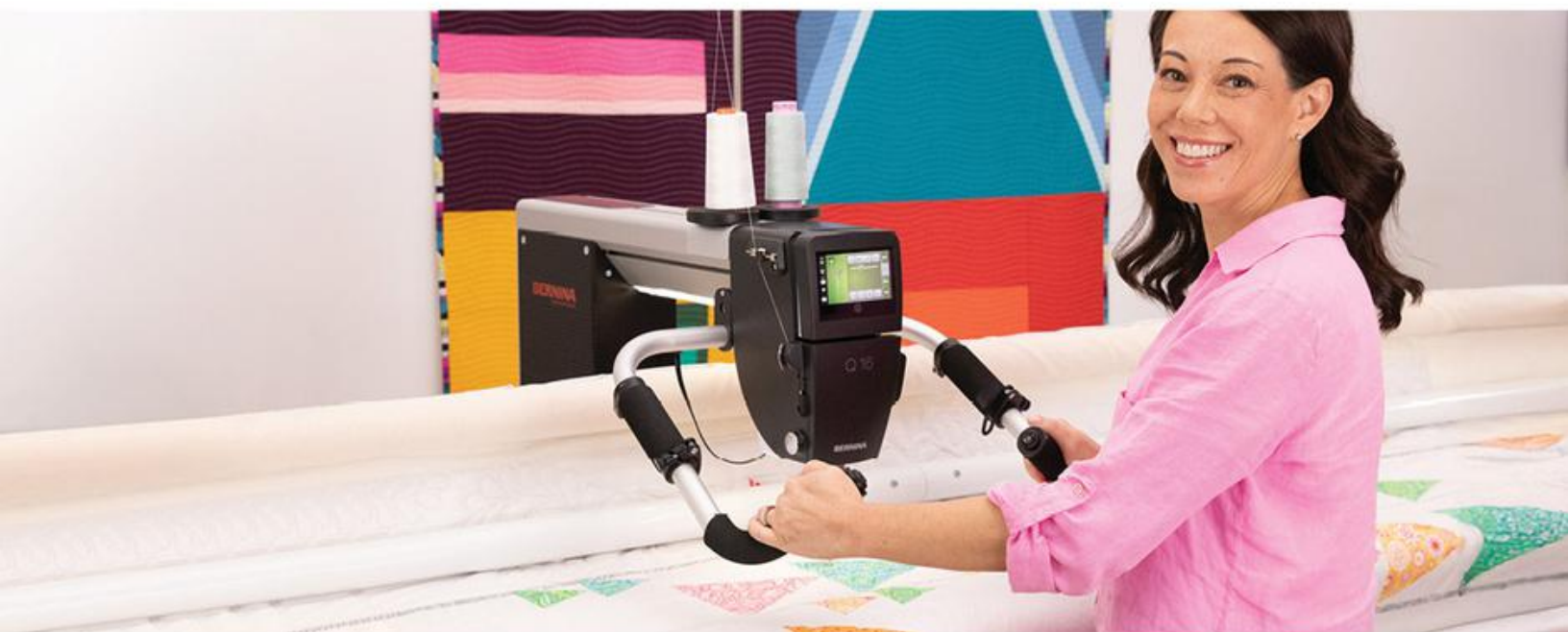
**BERNINA**  
made to create

\*Offer valid May 1-31, 2025 at any participating BERNINA Store in the United States of America. Offer applies to the purchase of a new BERNINA 590 sewing/embroidery machine. Gift with Purchase includes: One (1) BERNINA L Machine Suitcase, MSRP \$469; One (1) BERNINA L Module Suitcase, MSRP \$309; One (1) BERNINA Embroidery Box, MSRP \$749; One (1) BERNINA Midi Embroidery Hoop, MSRP \$479.99; One (1) V9 Creator Embroidery Software, MSRP \$1,299; and a Coupon Code for BERNINA Skill Hub Class, MSRP \$300. Total package value; \$3,606. Available while supplies last. Offer may not be combined or replaced with any other BERNINA promotional offers, rebates, coupons or discounts. Not valid on previous purchases. Taxes are not included in the total purchase calculation. Offer and its terms are subject to change. Offer available at participating BERNINA Dealers only. BERNINA of America, LLC reserves the right to extend, modify, eliminate, or reduce this offer without prior notice. 50 US/DC, 18+. Void where prohibited by law.



MAY 1-31, 2025

# spring INTO LONG ARM SAVINGS



Q 16 on  
10ft Studio Frame  
**\$8,999**  
\$12,499 MSRP



**BERNINA**  
made to create

\*Offer valid May 1-31, 2025 at any participating BERNINA Dealerships in the United States of America. Available while supplies last. Exclusions may apply. See store associate for details.

MAY 1-31, 2025

# spring INTO LONG ARM SAVINGS

Q 16 on Adjustable  
Foldable Table

**\$5,999**

~~\$8,499~~ MSRP



Q 16 on  
10ft Studio Frame

**\$8,999**

~~\$12,499~~ MSRP



**BERNINA**  
made to create

\*Offer valid May 1-31, 2025 at any participating BERNINA Dealerships in the United States of America. Available while supplies last. Exclusions may apply. See store associate for details.



MAY 1-31, 2025

# spring INTO ACCESSORY SAVINGS

**25% OFF** MSRP\*

- ✓ All BERNINA Luggage
- ✓ BERNINA Skill Hub Classes
- ✓ BERNINA BIG Books



**BERNINA**  
made to create

\*Offer valid May 1-31, 2025, for 25% off MSRP at any participating BERNINA Stores in the United States of America. Offer applies only to the purchase of new BERNINA Luggage, BIG Book, or BERNINA Skill Hub Class. Offer may not be combined or replaced with any other BERNINA/bernette promotional offers, rebates, coupons or discounts. Not valid on previous purchases. Available while supplies last. Offer and its terms are subject to change. Void where prohibited by law.

MAY 9-13, 2025

# spring INTO LIMITED-TIME FINANCING



## 0% Interest for 48 Months<sup>†</sup>

On in-store purchases of \$3,500 or more.  
Participating Dealers Only. 48 equal monthly payments  
required. Promo fee of 2% of amount financed will  
be included in required monthly payments.

<sup>†</sup>Offer applies only to single-receipt qualifying purchases. A promo fee, equal to 2% of the amount financed at time of purchase, will be shown as a separate transaction on your billing statement and included in the balance subject to this promo. Any taxes, delivery or other charges included in the amount financed will increase the related promo fee and the required monthly payments. For example, a \$950 purchase with \$50 in taxes and shipping costs, will be charged a promo fee equal to \$20 and \$1,020 will be charged to your account. No interest will be charged on the amount financed (including related promo fee), and equal monthly payments are required on such balance until it is paid in full. The payments equal the amount financed (including related promo fee) divided by the number of months in the promo period, rounded up to the next cent. These payments may be higher than the payments that would be required if this purchase was a non-promo purchase. During the last month(s) of the promo period the required monthly payment may be reduced due to the prior months' rounding. Regular account terms apply to non-promo purchases. For New Accounts as of 07/16/24: Purchase APR 34.99%. Penalty APR 39.99%. Min Interest Charge \$2. Existing cardholders: See your credit card agreement terms. Subject to credit approval. Participating Dealers Only. See Store for Details. We reserve the right to discontinue or alter the terms of this offer any time.

made to create **BERNINA**



BERNINA 990

# CREATE YOUR MAGIC



**NOW  
AVAILABLE!  
ARRIVING  
WEEKLY!  
CALL US!**

**BERNINA**  
*made to create*



# meet the B990

## Magical sewing, quilting and embroidery.

Imagine a sewing machine that can do it all: sew, quilt, and embroider with flawless precision, captivating speed and miraculous features. A machine that will help you transform any project into a masterpiece of art and craft. That sewing machine is the BERNINA 990, the ultimate expression of Swiss engineering, precision and innovation.

This new BERNINA flagship sewing and embroidery machine offers you an amazing 14 inches of space to the right of the needle and innovative features you have always dreamed of.

The B 990 is more intuitive than ever with easy, modern navigation and gestures. Tap into your inner artist customizing the 2,927 stitch patterns and 879 built-in embroidery designs. Precisely place and view directly on the screen in front of you with the help from the new BERNINA Placement Scanner, integrated Camera and BERNINA Pinpoint Laser.

The new BERNINA Integrated Stitch Regulator (BISR) brings stitch regulation to all quilting applications — including Ruler Work.

In addition, with WiFi Connectivity and the new Help Center at your side, you can access feature and technique information anytime and anywhere.

This is the new BERNINA 990. Create your Magic!

### **MORE SPACE THAN EVER BEFORE**

The B 990 includes a meticulously engineered extended freearm with 14 inches (356 mm) of space to the right of the needle, providing you with ample space for big, beautiful sewing, quilting and embroidery projects.

### **NEW 10-INCH TOUCH SCREEN AND MODERN USER INTERFACE**

The large interactive touch screen with gesture capabilities, icons with text descriptions, and intuitive interactions makes sewing and embroidery easier than ever. It can be operated with touch gestures, the included touch screen pen, or an optional computer mouse.

### **NEW HELP CENTER**

Access the onboard manual with search functionality, the Creative Consultant with step-by-step tutorials, or the Quick Start to get started sewing and embroidering in no time. The Help Center can be accessed on your personal device (tablet or smartphone) by simply scanning the QR code on screen (must be connected to WiFi) allowing you to always have information right by your side.



### **NEW BERNINA PLACEMENT SCANNER AND CAMERA**

Scan and view the embroidery hoop and view the needle area on screen with the Camera in both sewing and embroidery for perfect placement of stitch patterns and embroidery designs.

### **NEW AUTOMATIC NEEDLE THREADER**

The Automatic Needle Threader helps you get started with a different thread by simply pushing a button. Conveniently and quickly, every single time.





Includes NEW Jumbo Stitch, Undo/Redo and Stitch Designer

NEW: 10-inch color display with easy navigation and modern touch screen technology

Slide speed control  
Sewing speed of up to 1,200 stitches per minute

NEW: Help Center

BERNINA Dual Feed

NEW: Stitch Plate Recognition

NEW: Extended freearm  
with 14 inches (356 mm) of space  
to the right of the needle

**BERNINA**  
SWISS ENGINEERING

90 bright LED lights

BERNINA Free Hand System (FHS)

NEW: Automatic  
Needle Threader

NEW: BERNINA Placement Scanner and Camera



Scan QR code to watch  
the B 990 video

NEW: BERNINA Integrated  
Stitch Regulator (BISR)

NEW: BERNINA Pinpoint Laser

# Sew many features!

**BERNINA**  
made to create



# Sew without limitations.

Unlock unlimited creative potential by customizing the 2,927 stitch patterns or creating your own stitches with the Stitch Designer. Only BERNINA gives you Total Stitch Control to place and adjust every stitch exactly as you want it and with the new Jumbo Stitch, the stitches are magically transformed into patterns of all sizes — sizes never sewn before! Creative freedom to the fullest.

## NEW BERNINA PINPOINT LASER

Enjoy pinpoint precision by seeing exactly where the needle will enter the fabric in every needle position. The BERNINA Pinpoint Laser marks your start and travel points as you sew and embroider.

## NEW CUSTOMIZABLE STITCH ALTERING AREA

The Stitch Altering Area visualizes your sewing stitches and edits in real time. Zoom in and out, rotate the view and see the stitches magically come to life on the screen prior to sewing on your project. Activate the camera to view the needle area in the Stitch Altering Area and ensure your stitch pattern fits your needs.

## NEW JUMBO STITCH

Resize any stitch from 25% to 500% for unlimited creative potential.

## NEW UNDO/REDO

Undo and redo steps in sewing and Stitch Designer. View the changes instantly on the screen.

## STITCH DESIGNER

Create your own stitches by drawing your ideas right on the touch screen. With a touch, the B 990 transforms your design into a stitch pattern or alters existing stitches as you wish.

## NEW FILE MANAGER

Save adjusted or new stitch patterns and combinations. With the new File Manager, stitch patterns can be named and saved in the Personal Folder. Create folders, move, copy and paste files to organize your stitches and embroidery designs.



NEW BERNINA Pinpoint Laser



NEW Jumbo Stitch



Beautiful, giant embroidery.  
Made easy, fast and precise.



The BERNINA 990 features extraordinary innovations to make embroidering even more precise and easier than ever. Go beyond normal embroidery editing with the numerous on-screen editing features. With just the touch of a finger quickly edit and design your embroidery masterpiece visualized in the embroidery hoop. Easy, accurate and intuitive — the world is now your embroidery canvas.

Precisely position your embroidery on any project with the various placement options. The B 990 allows you to place a design down to a single stitch, even checking each stitch with the new BERNINA Pinpoint Laser. The new BERNINA Placement Scanner visualizes your hooped fabric directly on the screen as a background to preview design placement and colors. View the needle area on screen with the Camera and combine with the BERNINA Pinpoint Placement to accurately place your designs with ease, every time!

The new high-end Embroidery Module XL with BERNINA Smart Drive Technology (SDT) and the new Giant Hoop come standard with the B 990. The Giant Hoop expands your embroidery horizon with the extra-large space and ability to embroider a 16.1" x 12" area, including a full 12-inch square.

Save and organize your embroidery and stitch patterns directly on the machine or USB (type A or C) in the File Manager. Name saved files, create folders, cut, copy, paste and simply move entire folders of designs from the USB straight to your Personal Folder quickly and easily — just like magic!



The B 990 includes the NEW BERNINA Embroidery Module XL with SDT and extra-large embroidery area (410 x 365 mm, 16.1" x 12"), and the NEW Giant Hoop.



NEW: Customizable Quilt Designs

NEW: Design Altering Area with Gesture Editing

NEW: WIFI

NEW: Customizable Lettering

NEW: BERNINA Placement Scanner

## Next generation embroidery with the B 990.

### NEW BERNINA PLACEMENT SCANNER

Positioning of embroidery designs has never been easier. Scan to preview how your designs will look when stitched. Viewing the hooped fabric on the screen makes placement simple and provides a realistic preview for embroidery colors and sizing. Transfer the scanned background to the optional BERNINA Embroidery Software 9 DesignerPlus to digitize directly on your hooped project.

### NEW CUSTOMIZABLE LETTERING

24 embroidery fonts with limitless resizing! Create embroidery lettering perfectly to fit your project with multiple lines, alignment and corrections to previously made text. Edit the stitch density and pull compensation, and transform the shape and spacing to get perfect results every time.

### NEW ARRANGE FEATURES

Easily align, distribute, group/ungroup and move design stitchout order all while editing your designs. Match Start and Stop points of designs to create endless border and quilting designs without having to individually place multiple designs.

### PINPOINT PLACEMENT WITH NEW 4-POINT

Perfect design placement starts with exact virtual positioning. Pinpoint Placement gives you total control of the stitching placement of your embroidery. With the new 4-Point Placement, simply define four points on the fabric in the hoop and the design is placed proportionally or morphed to fit the created boundary.

### NEW WIFI CONNECTIVITY AND BERNINA STITCHOUT APP

WIFI allows you to transfer embroidery designs from your optional BERNINA Embroidery Software 9 DesignerPlus directly to your B 990, or the other way around. And thanks to the new BERNINA Stitchout App, the embroidery process can be monitored on your smartphone or tablet. The B 990 connects with the app allowing you to monitor the status of your embroidery stitchout from any room in your house. The app notifies you when the machine needs your direct attention, like thread color change, thread breakage or when the design is finished.



# Quilt like a wizard.

The B 990 is your perfect quilting companion. With the large 14-inch throat space and the new BERNINA Integrated Stitch Regulator (BISR), quilting is comfortable and convenient. New features include the ability to adjust the minimum stitching speed and the adjustment of stitch lengths as stitches per inch (SPI).

Computerized Quilting with the SDT Embroidery Module empowers you to quilt like a pro. Unlimited scaling possibilities, the ability to modify the stitches per inch (SPI) and enhanced quilt securing enable you to achieve perfect results. New features let you further edit and customize quilting designs by visualizing the start and stop, flipping the start and stop position and matching the start and stop points. Use the over 200 built-in Customizable Quilt Designs, or expand your library. Computerized quilting is now in your total control.

The B 990 is a superior, all-in-one quilting machine. Extra-large space, precise stitch regulation and the ability to customize quilts of all sizes — you can feel confident creating quilt projects from the first to the last stitch!

## NEW BERNINA INTEGRATED STITCH REGULATOR (BISR)

The new BERNINA Integrated Stitch Regulator is more than convenient when it comes to free-motion sewing and quilting. BERNINA Stitch Regulation is now possible with all quilting applications — including Ruler Work! The built-in stitch regulation works automatically with the 5.5 mm BISR Stitch Plate with Sensor and all BERNINA quilting presser feet and accessories. Simply attach the stitch plate, and the quilting foot of your choice to achieve perfect quilting stitches with the exact same length at variable sewing speeds.



## NEW COMPUTERIZED QUILTING

The new Customizable Quilt Designs bring the functionality of professional longarm quilting to your embroidery machine. Unlimited scaling possibilities, the ability to modify the stitches per inch (SPI) and enhanced quilt securing functions enable you to achieve perfect computerized quilting on your embroidery machine. Formats compatible: BQM, HQF, PAT, PLI, QLI and TAP.

## NEW START AND STOP EDITING

Push the boundaries of your computerized quilting by visualizing and adjusting the Start and Stop of Customizable Quilt Designs. Arrange designs to fit your quilt by flipping the position of the start and stop points, select multiple designs and match the start and stop points to create endless quilting designs with one touch — just like magic!

## NEW 4-POINT PLACEMENT

Computerized quilting is easy with 4-Point Placement. Simply define four points on the fabric in the hoop and the design is placed proportionally or can be morphed

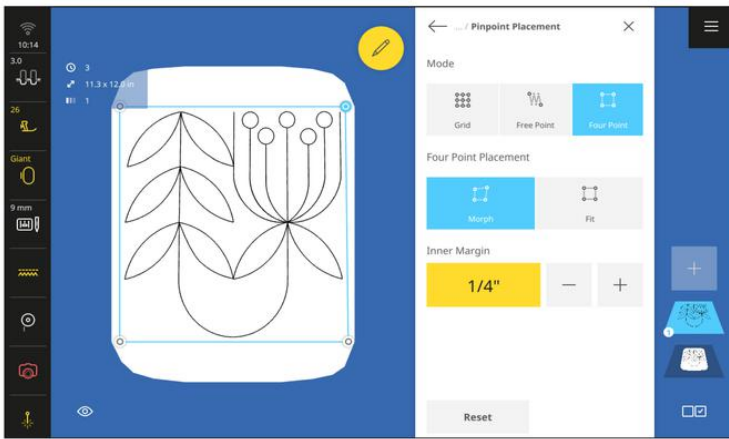
to fit the created boundary. Add margin to adjust the spacing between the edge of your quilt block and the computerized quilting for a professional finish.

## NEW GIANT HOOP WITH 12" SQUARE EMBROIDERY AREA

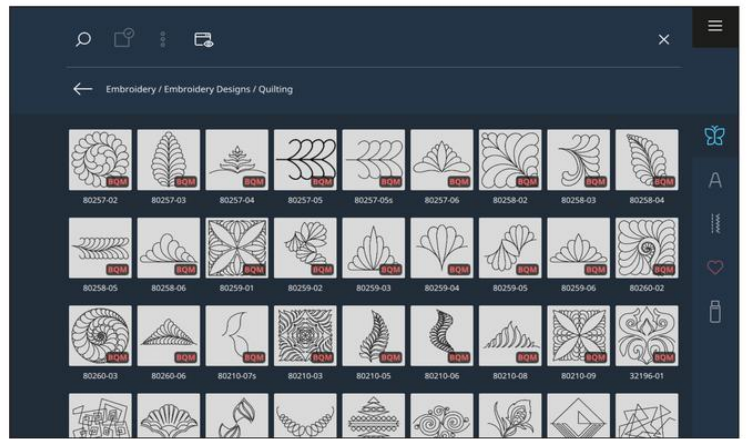
The new Giant Hoop is capable of stitching a full 12-inch square within the 16.1" x 12" embroidery field. Perfect for large quilt blocks! Easily hoop and re-hoop your quilt projects with the ergonomic twist lock closure and quick and easy markings on the inner hoop and template to align a 12-inch square. Effortless quilting even on the largest quilts.



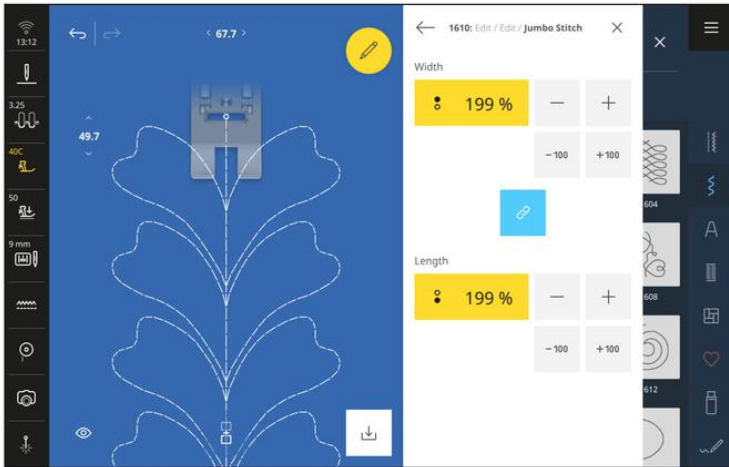




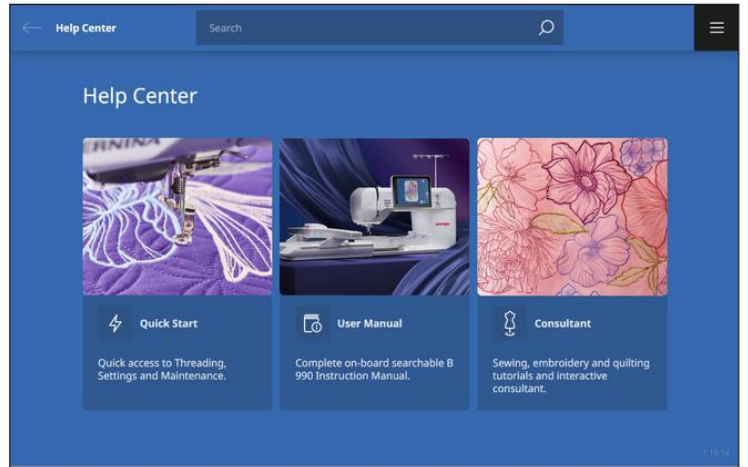
NEW 4-Point Placement with Morphing



NEW Customizable Quilt Designs



NEW Jumbo Stitch



NEW Help Center





# More features you will love about the BERNINA 990.

## EASE OF USE

The B 990 includes on-screen text to help you quickly find and understand editing features, saved and built-in stitch patterns and embroidery designs, and the machine settings. Use the search functionality in the Settings and Help Center to quickly find what you need when you need it.

## TOTAL STITCH CONTROL

The B 990 provides an exclusive level of stitch control, up to 1,200 spm. Whether you are altering stitch length, stitch width or needle position, the machine will remember the details for you. Your personal settings can be saved for later use.

## BERNINA DUAL FEED

The innovative BERNINA Dual Feed tames hard-to-manage fabrics providing superb fabric feeding. The B 990 allows for fine-tuning of BERNINA Dual Feed. Easy to engage when needed, it tucks completely out of the way when it's not required.

## SEW WITH EVEN GREATER EASE

The B 990 accomplishes many tasks all by itself. The presser foot lowers automatically at the beginning of a seam. Needle threading is simple and fast with the Automatic Needle Threader. The thread is cut automatically when you reach the end of a seam, or when you wish to change colors while embroidering. Moreover, a practical extension table (12.5" x 25.9") significantly increases your work area and is included in the standard package.

## BERNINA ADAPTIVE THREAD TENSION

The BERNINA Adaptive Thread Tension, a BERNINA innovation, provides ideal thread tension while sewing to achieve perfect stitch quality on both sides of the fabric. Once the tension is set according to the thread and fabric used, BERNINA Adaptive Thread Tension will constantly check the thread tension, adjusting it automatically when needed. The result is the finest stitching without pressing a button.

## JUMBO BOBBIN

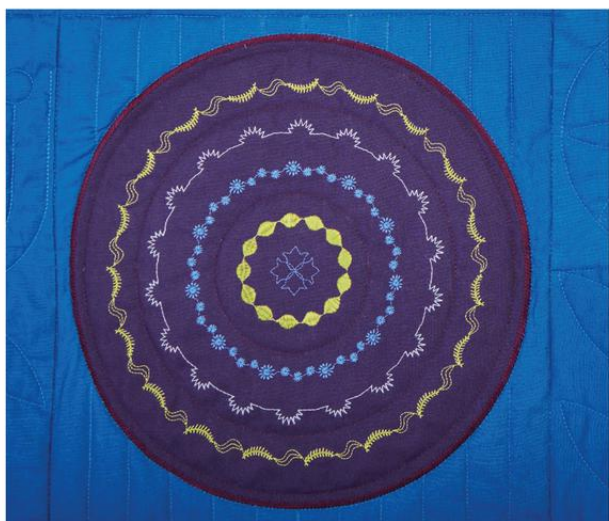
The front loading, easy access Jumbo Bobbin holds up to 70% more thread than standard bobbins, allowing you to sew and embroider longer without interruption.

## NEW BERNINA STITCHPRECISION<sup>2</sup> TECHNOLOGY

The B 990 features the next generation BERNINA stitchprecision<sup>2</sup> Technology that makes your sewing, quilting and embroidery experience quieter, more precise and joyful.

## NEW STITCH PLATE RECOGNITION

The B 990 automatically recognizes the stitch plate once it is attached to the machine. If the stitch plate is not compatible with the selected stitch pattern, needle or presser foot the machine will not sew as an additional security measure.



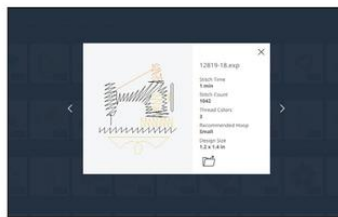


## EASE OF USE



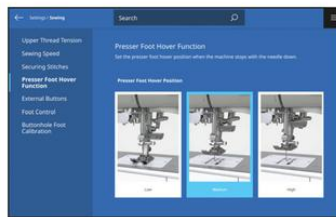
### Touch Gesture Editing

Move, size and rotate the designs in the design altering area for quick and easy transformations.



### File Manager

Save, name, copy, paste and move files in your Personal Folder. Receive additional information about designs before opening them in embroidery.



### Settings

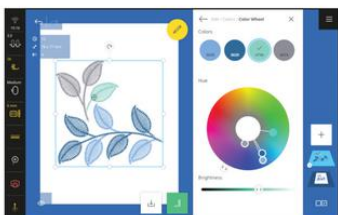
User-friendly settings with clear descriptions and searchable navigation.



### Help Center

Connect to the Help Center with your personal device by scanning the QR code.

## EMBROIDERY EDITING



### Color Wheel

Change the hue and saturation of a design on screen. Individually adjust colors in the Color Wheel to truly customize your embroidery designs with clear visual representation.



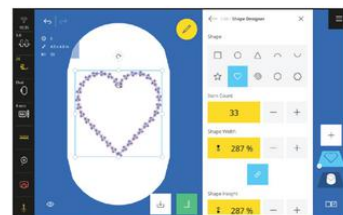
### Group/Ungroup

Combine designs into a Group to edit at once. Ungroup to edit designs individually, or by thread color.



### Customizable Lettering

Unlimited resizing of the 24 embroidery fonts. Additional editing tools expand your embroidery lettering options.



### Shape Designer

Arrange designs including imported stitches into formations such as rectangles, circles, hearts, stars, arches and more.

## DESIGN PLACEMENT



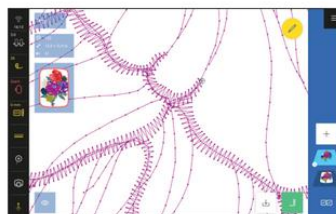
### Arrange

Align, group, ungroup or rearrange stitchout order quickly and accurately with visualizations directly in the hoop.



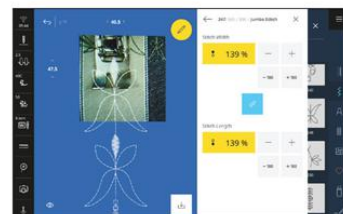
### Pinpoint Placement

Precisely place any embroidery design with 2-Point and 4-Point options.



### Virtual Positioning

Place every design to an exact stitch and see the visualization in the hoop on the screen.



### Camera

View the needle area for the perfect placement of stitch patterns and embroidery designs.

## NEXT LEVEL SEWING



### Stitch Designer

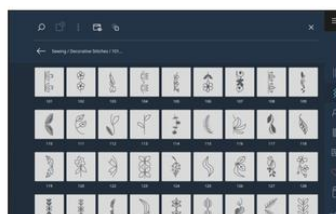
Create your own stitches and continuous line quilting designs by drawing your ideas right on the touch screen.



### Sideways Motion

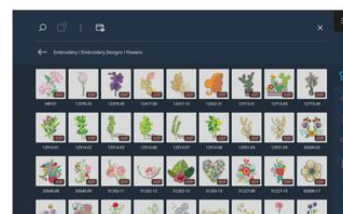
Enjoy 272 Sideways Motion stitches or create your own with the Jumbo Stitch for even more options.

## DESIGNS & ALPHABETS



### Built-in Stitches

Create with 2,927 sewing stitches including 16 sewing alphabets.



### Built-in Designs

879 built-in embroidery and customizable quilt designs at your disposal.



**GREAT  
PROMOTIONS  
& PACKAGE  
OFFERS!**

# JANOME Spring Sale

**APRIL 1<sup>ST</sup>  
THROUGH  
MAY 31<sup>ST</sup>**

**\$1,000 WISHLIST!**



Purchase a **Continental M17** model and select **\$1,000** worth of the Accessories of your choice for no additional charge!

**CONTINENTAL M17**



Janome's CM17, with A.S.R.<sup>™</sup> (Accurate Stitch Regulator) Technology, will take your creativity to the next level!

**SALE  
\$12,999  
MSRP  
\$19,999**

Purchase one of the below models and receive **Kimberly Einmo UpWords Block of the Month Kit for FREE!**

**CONTINENTAL M8  
PROFESSIONAL**



**SALE  
\$7,999  
MSRP  
\$9,999**

**KIMBERLY Einmo  
UpWords  
Block of the Month Kit**



**\$499 VALUE**

Bernatex<sup>®</sup> Fabric Collection, Aurifil<sup>®</sup> 12 Spool Thread Collection & Ruler Set

Horizon Memory Craft  
**9480QC Professional**



**SALE  
\$5,999  
MSRP  
\$6,499**



[www.janome.com](http://www.janome.com)

All offers are valid April 1st - May 31st, 2025 at participating Janome Authorized Dealers. Offers based on Manufacturer's Suggested Retail price and may not be combined with any other offer. All offers valid with qualifying machine trade-in. Void where prohibited.

**JANOME**  
Reliability by Design



# JANOME Spring Sale

APRIL 1<sup>ST</sup>  
THROUGH  
MAY 31<sup>ST</sup>

## SKYLINE ANNIVERSARY SERIES



SKYLINE   
Anniversary Edition S7

GIFT w/ PURCHASE



SKYLINE  
Anniversary  
Scissor Kit

\$126 VALUE



SKYLINE   
Anniversary Edition S6

GIFT w/ PURCHASE



SKYLINE  
Anniversary  
Scissor Kit

\$126 VALUE

SKYLINE   
S9



GIFT w/ PURCHASE

ARTISTIC DIGITIZER JR.



Embroidery Software

\$599 VALUE

JANOME  
*Artistic*  
DIGITIZER

APRIL 2025

FREE Access all Month  
to Artistic Digitizer!



www.janome.com

All offers are valid April 1st - May 31st, 2025 at participating Janome Authorized Dealers. Offers based on Manufacturer's Suggested Retail price and may not be combined with any other offer. All offers valid with qualifying machine trade-in. Void where prohibited.

**JANOME**  
Reliability by Design



# JANOME Spring Sale

APRIL 1<sup>ST</sup>  
THROUGH  
MAY 31<sup>ST</sup>

## FASHION & FINISHING COMBO

### Cover Pro 2000CPX

Janome's heavy-duty Coverstitch provides you with professional finishing results.



COMBO  
SALE  
**\$1,298**  
COMBINED MSRP  
**\$1,698**



### My Lock 454D

Janome's compact Serger will sail through Overlock seams smoothly.

### Memory Craft 550E LE

SALE  
**\$2,899**  
MSRP  
**\$3,999**



GIFT w/ PURCHASE  
KIMBERLY EINMO  
SPECIAL COLLECTIONS



Exclusive Design Collection: Rooville, Sashiko Embroidery Kit, AcuFil Software

**\$825 VALUE**

## TRAVEL MATE SERIES

### Travel Mate 200



SALE  
**\$899**  
MSRP  
**\$1,199**

### Travel Mate 50



SALE  
**\$699**  
MSRP  
**\$799**

### Travel Mate 30



SALE  
**\$349**  
MSRP  
**\$399**

### Travel Mate 16



SALE  
**\$269**  
MSRP  
**\$299**

JANOME  
**Artistic**  
DIGITIZER

APRIL 2025 **FREE** Access all Month  
to Artistic Digitizer!



www.janome.com

All offers are valid April 1st - May 31st, 2025 at participating Janome Authorized Dealers. Offers based on Manufacturer's Suggested Retail price and may not be combined with any other offer. All offers valid with qualifying machine trade-in. Void where prohibited.

**JANOME**  
Reliability by Design



# JANOME Spring Sale

APRIL 1<sup>ST</sup>  
THROUGH  
MAY 31<sup>ST</sup>

## Horizon Memory Craft 9410QC



SALE  
**\$3,299**  
MSRP  
**\$4,999**

GIFT w/ PURCHASE



**Advanced Accessory Package!**  
Extra-wide sewing table, AcuFeed  
HP Foot and Plate, accessory case

**\$440 VALUE**

## CONTINENTAL M6



SALE  
**\$3,999**  
MSRP  
**\$6,999**

GIFT w/ PURCHASE



**Advanced Accessory Package!**  
FREE M6 Upgrade with Extra-wide sewing table,  
AcuFeed, accessory case, and more

**\$500 VALUE**

## HD9 PROFESSIONAL



SALE  
**\$1,899**  
MSRP  
**\$2,399**

GIFT w/ PURCHASE



**Advanced Accessory Package!**  
Extra-wide sewing table, walking foot  
darning foot and plate

**\$270 VALUE**

## MORE GREAT DEALS!

### MC500E LE



SALE  
**\$1,999**  
MSRP  
**\$2,999**

### AT2000D



SALE  
**\$1,299**  
MSRP  
**\$1,799**

### CP3000P



SALE  
**\$1,199**  
MSRP  
**\$1,699**

### SEWIST 725



SALE  
**\$399**  
MSRP  
**\$499**

Offers exclusively  
available at your local  
Janome dealer!





CELEBRATING 10 YEARS

ANNIVERSARY EDITION

# SKYLINE S3



REACH FOR THE SKYLINE



An enduring legacy of performance and innovation. Janome celebrates the Skyline series 10th year with a sleek redesign of this beloved sewing and quilting machine.

# JANOME

[www.janome.com](http://www.janome.com)





## SKYLINE S3 *ANNIVERSARY EDITION*



FREE ARM  
ACCESSORY STORAGE



EXTRA-WIDE EXTENSION  
TABLE INCLUDED



7 MM STITCHES,  
SUPERIOR FEED SYSTEM PLUS



ONE-HANDED SUPERIOR  
NEEDLE THREADER 2

## FEATURES

### Technical

- Top loading full rotary hook
- Advanced needle plate
- 7-Piece feed dog
- Superior Needle Threader 2
- Drop feed
- Snap-on presser feet
- Extra high presser foot lift
- Easy bobbin winder
- Easy set bobbin
- Lighting: 2 locations (4 LEDs)
- Free arm/flat bed convertible
- Accessory storage
- Work space: 8.3" x 4.7" (210 x 120 mm)
- Size: 20" W x 12.5" H x 8.6" D
- Weight: 20.9 lb (9.5 kg)

### Sewing

- Superior Feed System Plus
- 120 Stitches with alphabet
- 7One-step buttonholes
- Maximum stitch width: 7 mm
- Maximum stitch length: 5 mm
- Maximum sewing speed: 820 SPM
- Needle positions: 15
- Twin needle setting
- Automatic thread tension
- Foot pressure adjustment
- Combine up to 50 stitches in patterns
- Mirror image stitch patterns

### Interactive

- LCD display with touch pad
- Start/Stop button
- Reverse button
- Lock stitch button
- Needle up/down button
- Automatic thread cutter button
- Speed control slider
- Direct Select buttons for 8 Utility stitches

### Included Accessories

- Zigzag foot A
- Zipper foot E
- Satin stitch foot F
- Blind hemming foot G
- 1/4" seam foot O
- Automatic buttonhole foot R
- Foot controller
- Extra-wide extension table
- Semi-hard fabric cover

### Skyline Bonus



Commemorative 10 Year Anniversary case with 25 blue bobbins, cleaning cloth and petite sewing kit.





# Sew On-the-Go



## TRAVEL MATE 200

The **Janome Travel Mate 200** computerized sewing machine offers an incredible Travel machine with a wide selection of quilting and applique stitches, a programmable block alphabet perfect for personalizing projects and quilt labels. An automatic Thread Trimmer, Hard Cover, and Extension Table are also included... plus a Bonus Quilting Kit !

### FEATURES

- Computerized Sewing Machine
- 200 Built-in Stitches, plus Alphabet
- 12 One-step Buttonholes
- Bright LED Screen with easy Navigation Keys
- Horizontal Rotary Hook Bobbin
- 820 stitches per minute
- Start/Stop Button
- Max. Stitch Width: 7mm
- Max. Stitch Length: 5mm
- 7-piece Feed Dog
- Free Arm Convertible
- Built-in One Hand Needle Threader
- Auto-declutch Bobbin Winder
- Adjustable Thread Tension
- Needle Up/Down
- Reverse Button
- Speed Control Slider
- Locking Stitch Button
- Automatic Thread Cutter
- Drop Feed



7-Piece Feed Dog



**BONUS INCLUDED:**  
Quilting Kit



200 Built-in Stitches

**JANOME**  
Reliability by Design

# Sew *On-the-Go*



## TRAVEL MATE 50

The **Janome Travel Mate 50** computerized sewing machine offers a solid travel machine with a versatile stitch collection that will see you through most sewing tasks. A jam-proof top drop-in bobbin with 50 built-in stitches, plus an abundant selection of accessories, allows you to take on quilting, fashion, or craft sewing with ease and confidence. Hard Cover and Extension Table included... plus a *Bonus Quilting Kit!*



7-Piece Feed Dog



**BONUS INCLUDED:**  
Quilting Kit



50 Built-in Stitches

### FEATURES

- Computerized Sewing Machine
- 50 Built-in Stitches • 3 One-step Buttonholes • Bright LED Screen with easy navigation keys
- 820 stitches per minute
- Start/Stop Button
- Max. Stitch Width: 7mm
- Max. Stitch Length: 5mm
- 7-piece Feed Dog
- Free Arm Convertible
- Built-in Needle Threader
- Auto-declutch Bobbin Winder
- Adjustable Thread Tension
- Needle Up/Down
- Reverse Button
- Speed Control Slider
- Locking Stitch Button
- Automatic Thread Cutter
- Drop Feed

**JANOME**  
Reliability by Design



# Husqvarna VIKING

Only at our  
Westport Rd  
(Louisville)  
location!

Share the Joy of  
Sewing with Her!

# 25% OFF

HUSQVARNA® VIKING® Accessories,  
Notions, & mySewnet™ Embroidery Software\*



Offer valid April 1 - May 11, 2025.

VIKING and MYSEWNET are exclusive trademarks of Singer Sourcing Limited LLC or its Affiliates. HUSQVARNA and the "H" Crown Device are trademarks of Husqvarna AB and are used under license. © 2025 Singer Sourcing Limited LLC or its Affiliates. All rights reserved. \*Excludes Monthly Subscriptions and mySewnet™ Feature Bundle 2024. All pricing decisions are at the sole discretion of the retailer. We reserve the right to modify or cancel the offer at any time in our sole discretion. Valid at authorized HUSQVARNA® VIKING® retailers in USA.

Share the Joy of Sewing  
**One For Her, One For You**



**Great Prices on Machines for Learners to Enthusiasts**

**Plus, Free Gifts with  
Select Machine Purchases\***

offer valid April 1 - May 11, 2025.

***Only at our Westport Rd (Louisville) location!***

**Husqvarna VIKING**



HUSQVARNA® VIKING®

# MEMORIAL DAY SALE

Get great deals on:

Demonstration Machines  
Previously Loved Machines  
Event & Classroom Machines

Ask an associate for details!

Offer valid May 22 - 26, 2025.

VIKING is an exclusive trademark of Singer Sourcing Limited LLC or its Affiliates. HUSQVARNA and the "H" Crown Device are trademarks of Husqvarna AB and are used under license. © 2025 Singer Sourcing Limited LLC or its Affiliates. All rights reserved. All pricing decisions are at the sole discretion of the retailer. We reserve the right to modify or cancel the offer at any time in our sole discretion. Valid at authorized HUSQVARNA® VIKING® retailers in the USA.

*Only at our  
Westport Rd  
(Louisville)  
location!*



# GO!

## LIVE YOUR BEST LIFE!



Buy any New Handi Quilter machine and receive an **@accuquilt** bundle for **FREE!**



**Buy any Moxie or PS Lite and receive this bundle!**

**\$340 VALUE**

**BUNDLE CONTAINS:**

**GO!** Me Fabric Cutter Starter Set  
**GO!** Strip Cutter (2.5", 2" finished)  
**GO!** Cutting Mat 6x24"  
**GO!** Circle (2", 3", 5")  
**GO!** Cutting Mat 6x12"  
**AccuQuilt** Anti-Static Spray

**Buy any Amara, PS Premium, or Infinity and receive this bundle!**

**\$750 VALUE**

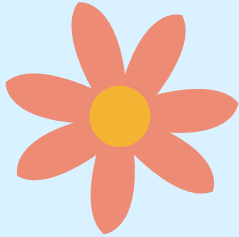
**BUNDLE CONTAINS:**

**GO!** Fabric Cutter Starter Set  
**GO!** Strip Cutter (2.5", 2" finished)  
**GO!** Cutting Mat 10x24"  
**GO!** Square (5", 4.5" finished)  
**GO!** Hunter Star (6" finished)  
**GO!** Cutting Mat 6x12"  
**AccuQuilt** Anti-Static Spray

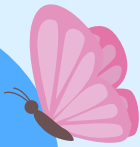
\*Promotion applies to new machine packages orders placed on April 7, 2025 through May 31, 2025 only. Orders must ship by May 31, 2025. Offer available at participating U.S. and Canada Handi Quilter retailers only. No combining of bundles, one AccuQuilt® per customer. Contact your local retailer for participation details. May not be combined with any other offers, discounts, or promotions.



# R25P PREMIUM PET VAC



**HEPA  
MEDIA  
FILTER!**



## INCLUDES...

- Pet Tool
- Allergen Sensor
- HEPA Media Filter
- 15ft Cleaning Reach
- Red Carpet Service
- Granulated Charcoal Filter

**Come see the  
rest of our  
selection!**

VACUUMS ARE ONLY AVAILABLE AT SEWING & VACUUM AUTHORITY LOCATIONS



**SEE STORE FOR  
UP TO 72 MONTHS  
FINANCING.  
SAME AS CASH.**

# **RICCAR R30 BRILLIANCE**

**Winner of the Carpet & Rug Institute's Gold Seal of Approval, the R30 flexes its muscles with power, durability, and HEPA media filtration.**

- 6-level height adjustment to help you clean no matter your floor type
- Multi-stage HEPA filtration clears the air of particles and odors
- 15-foot cleaning reach with telescoping aluminum wand and hose
- 11.5-inch cleaning width

**FIND YOUR STORE**



***The Best  
Pet Vac!***

**VACUUMS ARE ONLY AVAILABLE AT SEWING & VACUUM AUTHORITY LOCATIONS**



*Some of  
our favorite  
notions!*



## Taylor Seville's Magic Fork Pins™

Trusted by sewists and quilt-makers for decades, Magic Fork Pins™ feature a comfortable grip and heat resistant handles, ideal for nesting seams, basting and pinning several layers of fabrics. These are an essential! Stock up now.



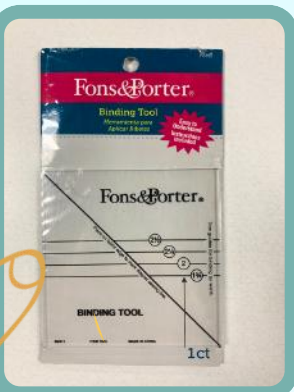
## by Annie Stiletto & Pressing Tool

This is one of Annie's very favorite tools! She considers the stiletto/pressing tool to be every bit as important as a rotary cutter. It is always in her hand as she sews. The stiletto point enables you to hold pieces in place easily and is especially helpful when piecing or attaching bindings.



## Acorn Easy Precision Piecing Starter Kit™

This fully-equipped kit has everything you need to start using the Easy Precision Piecing System™! Designed by quilters, for quilters, this kit can help beginners and advanced quilters alike take their skills to the next level.



## Fons & Porter Binding Tool

Another must-have for quilters! The Fons & Porter Binding Tool makes a great addition to any quilter's kit. Use this tool to get a smooth finish for binding ends, every single time. It is designed with a diagonal sewing line and trim guides at 1.75, 2, 2.25 and 2.5 inches.

# Find Your Location

## LOUISVILLE - WESTPORT RD

*(Springhurst - Across from Chick-Fil-A)*

10494 Westport Road

Louisville, KY 40241

(502) 412-6040

We are open

Monday - Friday 9:30 am - 5:30 pm

& Saturday at 9:30 am - 4:30 pm

## INDIANA - CLARKSVILLE

*(2 Blocks West of Super Store)*

914 Eastern Boulevard

Clarksville, IN 47129

(812) 283-8424

Monday - Friday 9:30 am - 5:30 pm

& Saturday at 9:30 am - 4:30 pm

## INDIANA - GREENWOOD

*(Next to Starbucks & McCallisters Deli)*

1035 North SR 135

Greenwood, IN 46142

(317) 882-6672

Monday - Friday 9:30 am - 5:30 pm

& Saturday at 9:30 am - 4:30 pm

## INDIANA - INDIANAPOLIS

*Quilt Quarters*

9504 Haver Way, Indianapolis, IN

(317) 757-8340

Monday - Friday 9-5 pm

& Saturday at 9-4 pm

